

BMW Lifestyle



Sheer  
Driving Pleasure

www.bmw.com  
www.bmw-shop.com

BMW Lifestyle

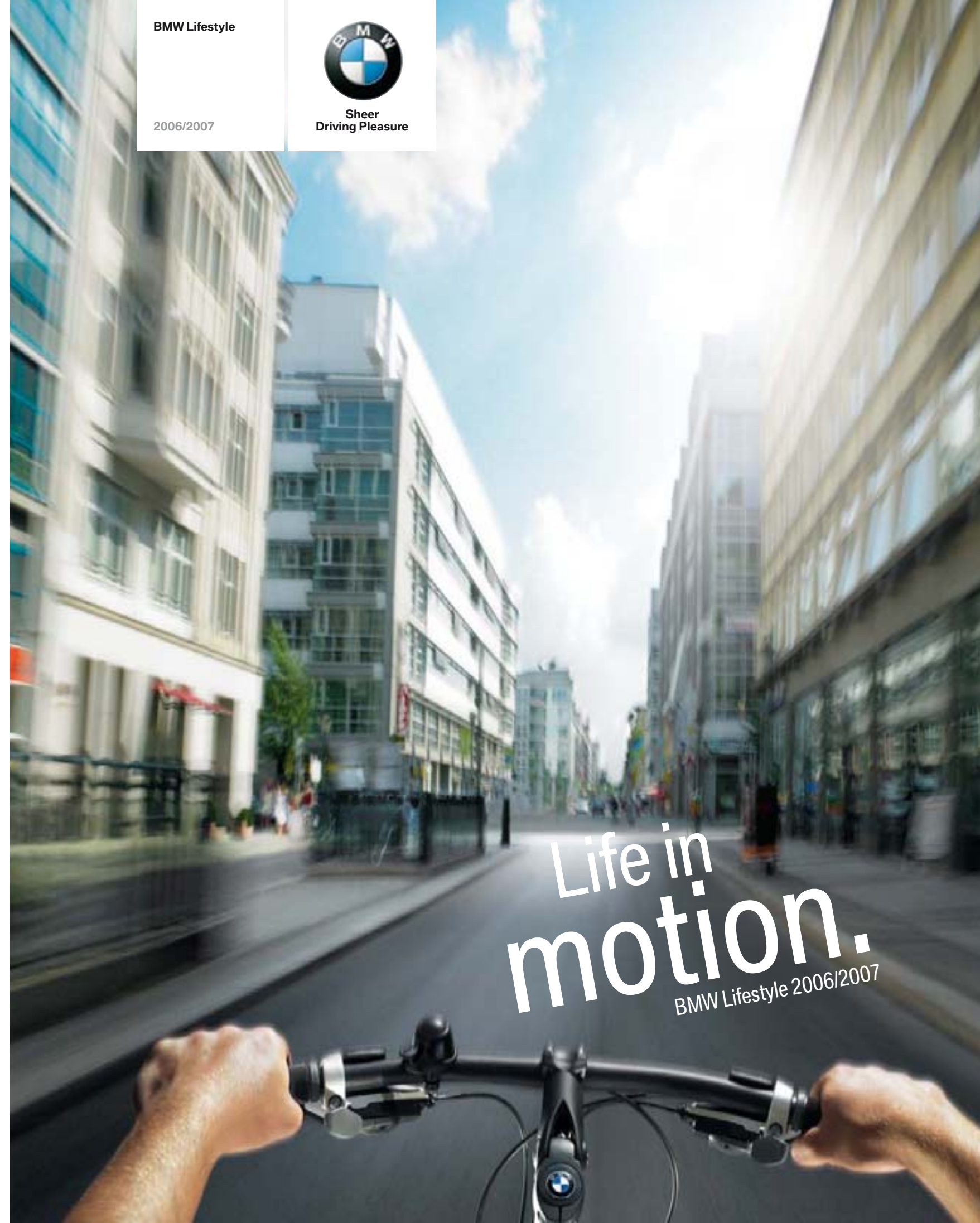


Sheer  
Driving Pleasure

2006/2007

Subject to misprints, errors and change without notice. Supplies while stocks last.  
© BMW AG, Munich, Germany. Not to be reproduced wholly or in part without  
written permission of BMW AG, Munich. This brochure was printed on chlorine and  
acid-free paper, using an eco-friendly printing process.

611 105 026 21. Printed in Germany 09/2006



Life in  
motion.  
BMW Lifestyle 2006/2007

**PAGE**

**04109 BMW Bikes & Equipment**

Pure adrenaline – no petrol involved.

**10135 BMW Lifestyle Accessories**

Travel partners for memorable holidays – or just a few fun-packed hours.

**36143 BMW Kids' Collection**

You're never too young to own a BMW.

**44147 BMW Miniatures**

Authenticity down to the smallest detail.

**48159 BMW Collection**

The nicest way of combining business and pleasure.

**60163 BMW ORACLE Racing Collection**

Happiness comes in waves.

**64169 BMW Sauber F1 Team Collection**

One of the fastest collections in the world.

**70173 BMW Golfspport Collection**

Focusing on the essential: a perfect game.

**74175 The most convenient way to discover BMW Lifestyle**

Discover dynamism in  
its most beautiful form –  
with BMW Lifestyle.



BMW Lifestyle offers products for everyone who leads a fulfilled and active life, who identifies with the BMW brand values – in other words, for all those who appreciate exceptional quality and a sporting challenge. This is why we use nothing but superior materials for all our products. Their design and function are perfectly adapted to the needs of people on the move – and we know a thing or two about this species. Enjoy our range of BMW Lifestyle products!





Be the  
**engine.**  
BMW Bikes & Equipment



Your heart is beating faster.  
Your eyes sparkle.

There is just as much passion and enjoyment in the new BMW bikes as there is in any BMW. And whether you prefer tarmac, mountains or fields – with a BMW bike, you will enjoy every inch of the way. BMW bikes stand for top quality, optimum safety, advanced technology and award-winning design (among others, the iF Design Award 2006). Manufacturing processes usually only found in automobile production create dynamic surfaces, powerful lines, and trademark BMW looks. Our frames will make your heart race even when stationary. Good to know also that all our bikes meet the very highest quality and safety requirements. After all, we put these bikes through their paces when testing them. Now it's your turn.





**The BMW Mountain Bike Enduro.** This top-class off-road bike is not about compromises – it's about fun. On the rough gravel of a dry river bed, along the lone trail to the next summit, or downhill through a remote gorge: if it's a challenge you're after, the BMW mountain bike Enduro is up for it. The continuously variable suspension fork adapts the geometry of the bike to every terrain. Giving you more possibilities. More speed. More adrenaline. You can almost see this bike's urge to move – every line, every concave-convex surface exudes raw power, coupled with the refinement only BMW is capable of. The monocoque frame consists of two deep-drawn shells which are robot-welded just like in automobile manufacturing. Very sturdy and extremely safe. The result: pure adrenaline, but in solid form. For technical specifications of BMW Bikes, see the current BMW Bikes & Equipment catalogue.

**Weight: 14.2 kg. Monocoque frame consisting of two deep-drawn aluminium shells (AL6061-T6), robot-welded and powder-coated.**

**Colour: Sand Grey/Charcoal.**

**Frame size:**

**S** (height up to 168 cm) **80 91 0 394 030 (2005 Model Year)**

**M** (height 165–178 cm) **80 91 0 411 276**

**L** (height 174–190 cm) **80 91 0 411 277**





**The BMW Cruise Bike.** An empty beach promenade at dusk. A bustling avenue on a Sunday morning. A spontaneous trip through the countryside in spring. Enjoy the BMW Cruise Bike. Easy-going. Smooth. Light. Just like the smooth-welded frame with perfectly joined seams. Whether in town or on the beach: this is a bike that people will notice. Its individuality, its lifestyle, its dynamism. The pleasure it offers in state-of-the-art technology and supreme comfort. In short: pure riding pleasure. The juries for the 2006 reddot design award and the iF Design Award 2006 agreed, with the BMW Cruise Bike winning both of these coveted prizes. For technical specifications of BMW Bikes, see the current BMW Bikes & Equipment catalogue.

**Weight: 14.2 kg. Aluminium frame (AL6061-T6), hydroformed and powder-coated, smooth-welded seams.**

**Colour: Champagne Silver.**

**Frame size:**

**S** (height up to 168 cm) **80 91 0 411 268**

**M** (height 165–178 cm) **80 91 0 411 269**

**L** (height 174–190 cm) **80 91 0 411 270**



reddot design award  
winner 2006

# Turn to style.

BMW Lifestyle Accessories



**Don't settle for anything less than BMW quality.**

Even if you don't happen to be travelling in a BMW automobile, there is a way of maintaining the standards you are used to. With BMW Lifestyle Accessories. A line of top-quality items, from suitcases and handbags to wallets, to give you even greater mobility. Choose between elegant black and a contemporary shade of red. Just right for a business trip, a long weekend, or a holiday.



**Travel Bag.** This stylish and clever bag features a telescopic handle concealed by a zip, transforming it into a handy trolley bag when needed. The flap is kept in position by means of a magnetic clasp and covers the main compartment's opening, in addition to the zip. The front zip pocket has an integrated mobile phone holder, leather key holder with snap fastener and key ring, as well as a compartment for flight tickets. Inside there is a longways zip compartment and a compartment for a pocket umbrella. Other fittings include two handles held together with a wide strap and a snap fastener, and a separate combination lock. Measurements (L x W x H): 60 x 29 x 40 cm

**Black 80 22 0 397 068**  
**Burnt Sienna 80 22 0 305 941**

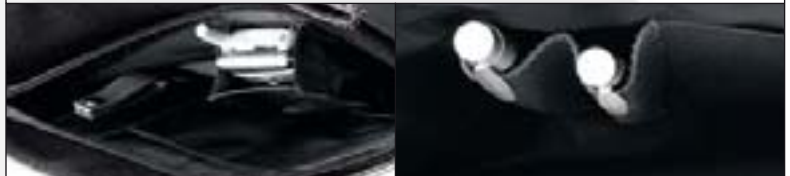


**BMW Lifestyle Symbol.** The Lifestyle Collection accessories come with this unique adornment, whose shape and design echo the BMW kidney grille – a universal symbol of sporting dynamism. So you can always travel in the style to which you have grown accustomed.



**City Bag.** The elegant appearance and innovative interior of this bag are a perfect match. Inside there is a length-adjustable shoulder strap. Exterior fittings include a concealed zip compartment at the front and back, an integrated mobile phone holder at the front, a leather key holder with snap fastener and key ring, and a compartment for storing flight tickets. The interior is divided into elaborate business sections: the main compartment comprises three pockets, which can be used, for instance, for business cards or identity cards, two writing utensil holders and an umbrella holder made of water-resistant material. The flap is held in position by means of a magnetic clasp. Measurements (L x W x H): 37 x 12 x 28 cm

**Burnt Sienna 80 22 0 305 945**  
**Black 80 22 0 305 919**





**Clothes Bag** (pictured in Black, also available in After dark/Charcoal grey). Your business suit will be well protected in here, and your shirt or blouse will arrive clean and crease-free as well. The clothes bag can be used as a trolley bag, thanks to a telescopic handle hidden by a zip. In addition, it has a BMW designed handle and elaborate interior fittings: a suit facility with two clothes hangers, transverse belt for lashing clothes, several interior zip compartments, two shoe pockets and a net compartment for a sponge bag, for example. In addition, the clothes bag has a mobile phone pocket, a compartment for flight tickets, a leather key holder, a separate combination lock and a water-resistant umbrella holder. The clothes bag can be conveniently hung up on two hooks.  
Measurements (L x W x H): 64 x 23 x 55 cm

**Black 80 22 0 421 321**  
**After dark/Charcoal grey 80 22 0 305 936**



**Travel/Sports Bag.** The model athlete amongst bags. Sporty in design and versatile in function. Features a trolley handle concealed by a zip. Fitted with two zip pockets on the front, a mobile phone holder, leather key holder, separate combination lock and a compartment for flight tickets. The interior structure of the lockable main compartment comprises two open-top wet pockets, a longways zip pocket and a compartment for a pocket umbrella. Also has space for two tennis rackets.  
Measurements (L x W x H): 74 x 39 x 33 cm

**Black 80 22 0 421 322**



reddot design award  
winner 2006



**Suitcase.** Do you have a week's holiday? Or perhaps even two? Then we have just the right companion for you. The rolling suitcase with the innovative BMW design. With its spacious main compartment including packing straps and an interior compartment with zip. At the front there is also another zip compartment. Basic fittings: mobile phone holder, pocket for flight tickets, leather key holder, water-resistant umbrella holder. Other features: flap, BMW designed handle, protective bars on the rear, emergency handle on the side and a sponge bag in matching design, as well as a separate combination lock. Measurements (L x W x H): 66 x 49 x 30 cm. Volume: 120 litres. Weight: 5.2 kg. Weight with sponge bag: 6.5 kg.

**Black 80 22 0 397 065**  
**After dark/Charcoal grey 80 22 0 305 933**



reddot design award  
winner 2006





**Business Case.** If you have to go on a business trip at short notice, it's good if your luggage is as flexible as you are. The business case with its compact design is the ideal solution for business trips or short holidays. Fittings as for the large roller case.  
Measurements (L x W x H): 60 x 37 x 26 cm. Volume: 80 litres. Weight: 4.5 kg. Weight with sponge bag: 6 kg.

**Black 80 22 0 397 066**  
**Burnt Sienna 80 22 0 305 908**  
**After dark /Charcoal grey 80 22 0 305 934**



**Onboard Case.** Perfect for frequent travellers and the ideal flight hand luggage. Fittings as for the large roller case. The onboard case also has a removable laptop insert.  
Measurements (L x W x H): 54 x 36 x 20 cm (Lufthansa onboard measurements). Volume: 55 litres. Weight: 3.7 kg. Weight with sponge bag: 4.9 kg.

**After dark/Charcoal grey 80 22 0 305 935**  
**Black 80 22 0 397 067**







**Pilot Case.** This luggage item is bound to give you great pleasure day after day – with its sturdy trolley system, it is ideal for taking on board flights as hand luggage. Impressively compact dimensions. Fitted with a BMW designed handle. Premium calf leather gives it its unique appeal. The interior has a spacious main compartment with a flexible divider, fitted with a zip so it can be used as a document compartment. Handy storage options with pockets for mobile phone, tickets, business cards, writing utensils, keys, laptop, PDA, umbrella – and of course your documents and ideas. The main compartment also contains an umbrella holder made of water-resistant material. Finally there is a removable laptop insert and an integrated combination lock.

Measurements (L x W x H): 50.5 x 22 x 42 cm

**Black 80 21 0 305 951**



reddot design award  
winner 2006



**Presentation Folder.** This two-ring, loose-leaf A4 ring folder holds documents, transparencies and similar items. The appealing BMW design in combination with perfectly crafted calf leather gives nothing but the very best impression. Interior features: two pockets for A4 documents and other compartments for mobile phone, PDA and business cards. Pockets for writing utensils and a ruler (supplied) as well as a small additional pouch. The front of the folder has a separate zip compartment. The handle folds away.

Measurements (L x W x H): 40 x 9 x 32 cm

**Black 80 21 0 305 923**



**Briefcase.** The briefcase displays high-quality workmanship and a striking and timeless ergonomic design. The front is attractive, with embossed full calf leather, while the sides are made of supple nappa calf leather. The interior has two main compartments, one for business items with pockets for mobile phone, PDA, business cards, flight tickets, writing utensils and a leather key holder with snap fastener and key ring. The briefcase has a BMW designed handle and comes with a shoulder strap.

Measurements (L x W x H): 42 x 11.5 x 31 cm

**Black 80 21 0 305 950**





**Ladies' Handbag: Fashion.** Don't be surprised if you attract attention – with the unusual BMW design of this handbag. Seen from the front, the strap connects the front top right with the rear top left. The bag can be carried by hand or over the shoulder. The outer sides are made of pearl-embossed full calf leather, the side sections and the crown are in soft nappa calf leather. The interior is highly functional, and has a zip compartment down the whole side, with two pockets, mobile phone and business card holders, a pocket for writing utensils and a leather key holder with snap fastener and key ring. Wide access at the sides makes for convenient handling. Measurements (L x W x H): 38 x 11.4 x 39 cm approx.

**Black 80 21 0 309 006**  
**Burnt Sienna 80 21 0 305 946**



**Ladies' Handbag: Classic.** The perfect companion for private or business appointments. Practical interior: with a zip compartment down one entire side, with two pockets on the opposite side, compartments for mobile phone and business cards, a pocket for writing utensils and a leather key holder with snap fastener and key ring. Wide access at the sides makes for convenient handling. Material: pearl-embossed calf leather front and back, soft calf nappa leather on sides. Measurements (L x W x H): 41 x 18 x 25 cm approx.

**Black 80 21 0 309 005**  
**Burnt Sienna 80 21 0 309 004**





**Key Holder.** The most attractive way to carry your keys. With a zip pocket and rotating, removable ring for a car key, attached by snap fastener. Key plate with six hooks. Material: pearl-embossed calf leather outside, soft calf nappa leather inside. Measurements (L x W x H): 11.5 x 2.5 x 8.0 cm approx.

**Black 80 21 0 305 954**  
**Burnt Sienna 80 21 0 305 943**



**Ladies' Purse.** The elegant design is underlined by the high-quality leather. Features: flap with large coin pouch, snap fastener with integrated pocket for emergency car key. With five additional compartments, six credit card pockets and two note compartments in the rear. Material: pearl-embossed calf leather outside, soft calf nappa leather inside. Measurements (L x W x H): 11.5 x 2.4 x 10.0 cm approx.

**Burnt Sienna 80 21 0 305 947**  
**Black 80 21 0 305 917**



**Ladies' Purse, wide.** Change purse with Italian finish: top-class calf leather crafted to form an attractive purse. Functional layout: double coin compartment with snap fastener in the centre and concealed zip. Numerous other compartments for emergency vehicle key, credit cards, identity card and vehicle papers. Material: pearl-embossed calf leather outside, soft calf nappa leather inside. Measurements (L x W x H): 19.0 x 2.5 x 10.7 cm approx.

**Black 80 21 0 305 918**  
**Burnt Sienna 80 21 0 305 955**





**Wallet.** It's all down to the right compartments – and there are plenty here: two note compartments, ten credit card slots and other compartments for identity card and vehicle papers. Further details: a coin pocket with snap fastener, including an integrated pocket for emergency vehicle key and one exterior compartment. Material: calf nappa leather, embossed calf leather. Measurements (L x W x H): 12.5 x 1.7 x 9.6 cm approx.

**Black 80 21 0 305 948**



**Notecase.** Keeps your finances in order. Fitted with a compartment for twelve credit cards, held closed by snap fastener. With additional wide and narrow slots. Material: calf nappa leather, embossed calf leather. Measurements (L x W x H): 10.3 x 1.5 x 19.6 cm approx.

**Black 80 21 0 305 920**



**Clip Wallet.** Your money and personal items are safe here. Wallet with two note compartments, note clip and numerous pockets for credit cards, identity card and vehicle papers. With a coin pocket comprising a snap fastener and an insert for emergency vehicle key, and an external compartment. Material: calf nappa leather, embossed calf leather. Measurements (L x W x H): 12.7 x 2.3 x 9.5 cm approx.

**Black 80 21 0 305 949**



**Credit Card Holder.** To make sure you always pick the right card. The holder has 13 slots for credit cards, two compartments and two identity card slots. Material: calf nappa leather, embossed calf leather. Measurements (L x W x H): 12.5 x 1.7 x 9.6 cm approx.

**Black 80 21 0 395 329**







**Silver Key Holder: Convex/Concave.** For that special feel in your hand – a combination of solid 935 sterling silver and supple leather. Hand-worked surfaces and facets, hand-polished.

**Silver with black leather 80 23 0 305 957**  
**Silver with Burnt Sienna leather 80 23 0 305 965**

**VIP Key Holder: Silver.** The luxurious appearance of this key holder is enhanced by its solid 935 sterling silver design. A distinguished accessory which your hands will love. Manually re-worked, polished and finely matted.

**Silver 80 23 0 305 959**

For even more exclusive demands: the VIP key holder, which can be individually manufactured in white gold or platinum on request. In addition, you can also have gems worked into this key holder to give it your own personal touch.

**White gold or platinum 80 23 0 305 966**  
 (only manufactured individually)



**Silver Key Holder: Freeform.** The solid shape makes an immediate impression – a feeling which is enhanced when you hold the 935 sterling silver key holder in your hands. Hand-polished and finely matted.

**Silver 80 23 0 305 958**



**Silver Key Holder: Sandwich.** The turned silver plates are structured according to a sandwich principle. Leather is the connecting element. The 935 sterling silver plates are brushed and matted by hand for a pleasant, refined touch.

**Silver with black leather 80 23 0 305 956**



**BMW 7 Series Silver Key Holder.** Solid 935 sterling silver, beautifully shaped. 7 Series symbol on the front and embossed BMW logo on the back. Specially developed for the BMW 7 Series key.

**Silver 80 23 0 154 979**



**Fountain Pen.** Modern design with screw cap. Combined with exquisite, pearl-embossed calf leather. Fitted with high-quality rhodanised white gold wing nib in 14 K (585). Width M. Refills using standard large-volume cartridges (except Lamy) or with the supplied converter.

**Burnt Sienna leather 80 24 0 305 960**



**Roller-ball Pen.** Tasteful combination of supple, pearl-embossed calf leather. Perfect to the touch. Uses standard capless fluid refills (except Lamy). Screw cap.

**Burnt Sienna leather 80 24 0 393 005**



**Ball-point Pen.** Unusual in appearance, pleasant to hold. Activation by means of a fine rotation mechanism at the tip. Elegant combination of cool metal and pearl-embossed calf leather. Standard refills (except Lamy).

**Burnt Sienna leather 80 24 0 305 961**



**Writing Utensil Holder.** An elegant accessory that will always attract attention. Made from the finest, carefully selected calf leather. Fold with concealed magnetic closure. Suitable for two writing utensils. Available either in elegant black or stylish Burnt Sienna. Measurements (L x W x H): approx. 5.3 x 2.5 x 17.2 cm

**Burnt Sienna 80 21 0 417 676**  
**Black 80 21 0 305 968**







**Fountain Pen.** The attraction of opposites. An unusual combination of two differing materials gives this fountain pen its special attraction. Fitted with rhodanised white gold wing nib in 14 K (585). Width M. Refills using standard large-volume cartridges (except Lamy) or with the supplied converter.

**Black leather 80 24 0 395 343**

**Ball-point Pen.** This writing instrument is characterised by the unmistakable contrast of metal and calf leather. Activation by means of a fine rotation mechanism at the tip. Standard refills (except Lamy).

**Black leather 80 24 0 395 344**

**Roller-ball Pen.** A writing instrument you won't want to put down. Supplied with one standard capless fluid cartridge (not Lamy). Innovative closing mechanism in cap.

**Black leather 80 24 0 395 345**

**Fountain Pen.** A remarkable writing instrument. Elegant in design, a true pleasure to hold. Fitted with rhodanised white gold wing nib in 14 K (585). Width M. Refills with standard large-volume cartridges (except Lamy) or with the supplied converter. Matt rubber finish.

**Rubber brown anthracite finish 80 24 0 305 939**

**Ball-point Pen.** Incomparable BMW design, pleasing to the touch. Activation by means of a fine rotation mechanism at the tip. Standard refills (except Lamy). Matt rubber finish.

**Rubber brown anthracite finish 80 24 0 305 940**

**Rotating Pencil.** Slim with impressive BMW design. Standard refills (except Lamy). Matt rubber finish.

**Rubber brown anthracite finish 80 24 0 393 008**



**Walking-stick Umbrella.** Elegant umbrella with lightweight aluminium and fibreglass frame. Handle with embossed leather insert in special BMW design. Fabric: 100% Teflon-coated polyester.

**Black 80 23 0 305 902**



**Pocket Umbrella.** Practical pocket umbrella for general use out and about. Sophisticated opening/closing system. Handle in special BMW design with leather insert. Including holder. Fabric: 100% Teflon-coated polyester.

**Black 80 23 0 305 901**



The joy  
starts here.

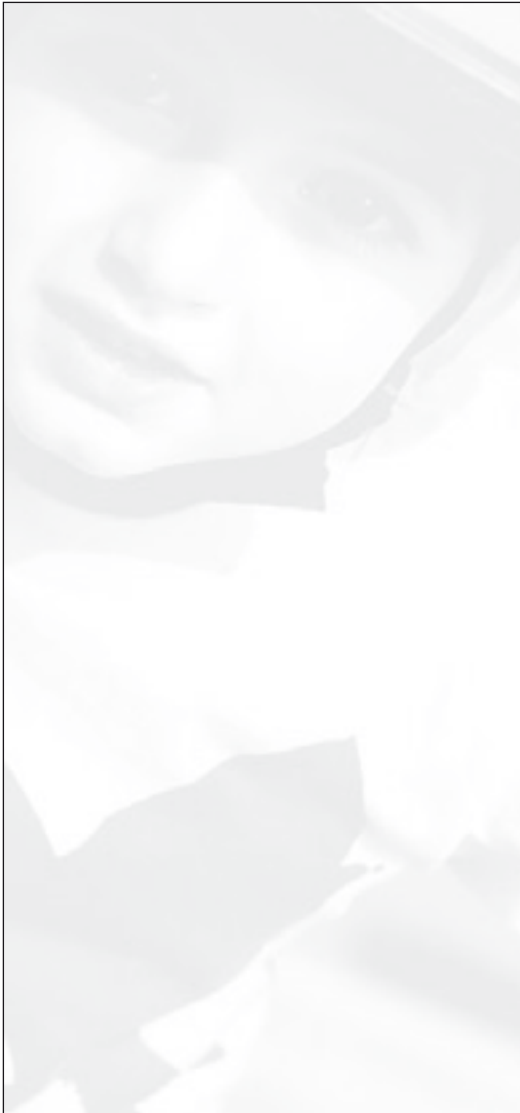
BMW Lifestyle Kids' Collection



## We all had to start small.

That's why we developed the BMW Lifestyle Kids' Collection, featuring toys which grow up along with your kids. Like the Kidsbike – which can be turned from a push-bike into a fully-fledged children's bicycle. So kids can explore the grown-up world in a playful way, and learn to appreciate the finer things in life – such as the pleasure of driving.





**BMW Kidsbike.** The new BMW Kidsbike features the trademark BMW design and is ideal for teaching children how to ride a bike without stabilisers, enabling them to learn balance from an early age. This will not only make it easier for them to switch to actual cycling later on – they will also feel more secure from the start. The solid plastic pedals are fitted with reflectors and provide additional safety for small children. Each BMW Kidsbike comes with a TÜV-approved bicycle helmet matching the colour of the frame. The ergonomically shaped seat saddle and handlebar ensure a comfortable seating position. The push-bike can easily be converted into a regular children's bicycle by fitting the pedal unit and chain – and in no time, even smaller riders will be good to go. The Kidsbike is suitable for children from about 2½ years (without pedals) up to 6 years of age (with pedals).  
 Frame height: 36 cm, seat height: 38–46 cm.  
 Weight: 6 kg (without pedals), 8 kg (with pedals).  
 Max. load: 50 kg

**Blue 80 91 0 409 791**  
**Orange 80 91 0 417 900**



**BMW Cable Lock.** Lightweight safety lock with 90 cm (36") steel cable, easy-to-set four-digit number combination and typical BMW design. Weight: 110 g.

**80 93 0 397 486**

The detachable handlebar padding contains a mesh bag which can be used to transport small items like toy animals (toy not included).



This practical zippered bicycle bag fits perfectly in the space between the two sections of the bicycle frame. Easy assembly.  
 Materials: hard-wearing synthetics with applied BMW logo.







**BMW Baby Racer II.** The acclaimed classic in blue. A straightforward design with a comfortable seat for hours of driving pleasure. Special rubber tyres minimise noise and enable indoor use – even on parquet flooring. TÜV-approved. Suitable for ages 1½ to 3.  
 Length: 70.5 cm  
 Width: 32.5 cm  
 Height: 40 cm  
 Wheelbase: 44 cm  
 Weight: 4.5 kg

**80 93 0 006 909**



**BMW Pull-back Baby Racer.** BMW toy car, Baby Racer II design, with pull-back drive and fridge magnet. Available in red or blue.  
 Scale: 1 : 10

**80 93 0 394 901**



**BMW Z4 Playcar.** Toy car, perfectly matched to Playmobil figures, detailed design, bonnet opens to reveal lifelike engine model. Each Playcar comes with two matching Playmobil figures.  
 Manufacturer: Playmobil  
 Scale: 1 : 18

**Blue 80 45 0 305 517**  
**Red 80 45 0 305 516**



**BMW RC Baby Racer II.** Remote-controlled toy car, BMW Baby Racer II Edition design, for ages 5+. Features an innovative remote control unit that allows switching from forward motion to reverse simply by rotating the remote control unit. With functioning LED headlights and taillights. Available with two different control frequencies, to enable races between one Baby Racer and another.  
 Scale: 1 : 10

**27 MHz 80 93 0 394 902**  
**40 MHz 80 93 0 411 283**



**BMW Toy Car Selection 1 and 2.** Original Matchbox cars available in individual packaging.  
 Scale: 1 : 64

**Selection 1.** BMW 3 Series Sedan, BMW 3 Series Coupé, BMW 850i, BMW Z8.

**80 57 0 028 803**

**Selection 2.** BMW X5, BMW Z3 Roadster, BMW 3 Series Sedan “German Police”, BMW 3 Series Convertible.

**80 57 0 028 804**





**BMW Z4.** Single-seater in two versions: as a pedal car with comfort pedals, or as an electric car (6 V batteries) featuring our patented electronic starting system. Adjustable seat, rubber wheels. Made from tough plastic containing no harmful substances. For ages 3 to 5 approx.

Electric version – Top speed: 4 km/h approx., running time: minimum 1.5 hours of continuous operation, charging time: approx. 16 hours; forward and reverse gears, foot brake, double brake function for added safety. Weight: approx. 11.5 kg.

Pedal version – Easy-go pedal drive, adjustable pedals. Weight: approx. 7.5 kg.

**Electric version 80 93 0 413 294**

**Pedal version 80 93 0 396 075**



**BMW Junior Bike.** The little big bike – a classic in the children's programme. This unusual tricycle benefits from an individual design, with easy steering, large, low-noise rubber wheels and optimised ergonomics for an ideal seating position. Thanks to its modular design, it is easy to take apart and transport.

Suitable for ages 3 to 5.

Length: 71 cm

Width: 37.5 cm

Height: 56 cm

Wheelbase: 48,5 cm

Weight: 4.5 kg

**80 93 0 145 906**



**BMW M6 Convertible.** Detailed reproduction of the exclusive real-life model. Metallic blue paintwork. Original M front and rear bumpers, M6 wheels and M6 stickers on boot lid and front wings. Available with pedal or electric drive. With electric horn and speedometer. Material: painted steel frame, plastic containing no harmful substances. Max. load: 50 kg. For ages 4 to 7 approx.

Electric version – Adjustable operating speed: 8 km/h forward and 4 km/h reverse, running time: minimum 1.5 hours of continuous operation, charging time: approx. 15 hours, forward and reverse gears, foot brake, double brake function for added safety. Weight: approx. 17 kg.

Pedal version – Easy-go pedal drive, adjustable pedals. Weight: approx. 10 kg.

**Electric version 80 93 0 421 035**

**Pedal version 80 93 0 421 023**



**BMW Baby Racer II Edition.** Luxury edition featuring fully functional headlights, taillights and indicators, and an exclusive design. TÜV-approved. Special rubber tyres enable indoor use. Suitable for ages 1½ to 3.

Length: 70.5 cm

Width: 32.5 cm

Height: 40 cm

Wheelbase: 44 cm

Weight: approx. 5 kg

**80 93 0 300 429**



reddot design award  
winner 2004



Set 1



Set 2



Traffic lights Traffic cone

**Accessories.** Make learning traffic safety child's play. International road signs (height 68 cm), traffic cones (height 26 cm) and fully functional traffic lights (height 72 cm) made of durable plastic.

**Set 1 80 93 0 396 137**

**Set 2 80 93 0 396 138**

**Traffic lights 80 93 0 396 136**

**Traffic cone 80 93 0 396 139**



**BMW Baby Racer II Formula Junior.** For the racing drivers of tomorrow. With sports steering wheel, front spoiler, speedometer and rev counter, metallic-effect front and rear sections and BMW logo. Rubber tyres minimise noise. TÜV-approved. Suitable for ages 1½ to 3.

Length: 73 cm

Width: 32.5 cm

Height: 40 cm

Wheelbase: 44 cm

Weight: 6.4 kg

**80 93 0 413 555**





Discover the  
**details.**  
BMW Miniatures

**It may have been your very first car.  
Or it could be your next dream car.**

No matter which BMW brings back sweet memories or makes your heart beat faster, with BMW Miniatures, you can enjoy it today. And it is the combination of lovingly crafted details, stunning design and technical finesse that makes each model so special. Each scale version has its own appeal. Depending on their build size, the models don't just share the materials and shapes of the originals – even trademark details are reproduced faithfully to create a model that truly lives up to the original. Are you ready for a test drive?



**BMW 3 Series Coupé** Crimson Red non-metallic – 1: 87 scale



**BMW 3 Series Coupé** Space Grey metallic – 1: 18 scale



**BMW 7 Series LCI Individual** Blue Onyx metallic – 1: 18 scale



**BMW 3 Series Coupé** Black Sapphire metallic – 1: 43 scale

**BMW 3 Series Coupé.** A 3 Series sets standards in terms of design, dynamics and comfort. Even as a miniature. This model features a lovingly crafted interior, which includes a “floating” interior mirror. The chrome-plated grille unmistakably echoes the lines of the original. And just like its big brother, it’s great fun to drive.

**BMW 7 Series Individual.** Sporting fascination on a small scale – yet the BMW 7 Series Individual feels as big as ever. Real leather seats, first-class workmanship and extreme attention to detail characterise each model, no matter how small the scale. The driving experience, too, is up to its usual high standard. So whether you go for dynamic cruising on your desk, or flawless parking on your bookcase, is entirely in your hands.



**BMW 7 Series LCI** Sterling Grey metallic – 1: 18 scale

Model	Scale	Colour	Item number
BMW 3 Series Coupé	1: 18	Crimson Red non-metallic	80 43 0 407 219
BMW 3 Series Coupé	1: 18	Space Grey metallic	80 43 0 407 220
BMW 3 Series Coupé	1: 18	Black Sapphire metallic	80 43 0 407 222
BMW 3 Series Coupé	1: 43	Crimson Red non-metallic	80 42 0 407 223
BMW 3 Series Coupé	1: 43	Space Grey metallic	80 42 0 407 224
BMW 3 Series Coupé	1: 43	Black Sapphire metallic	80 42 0 407 226
BMW 3 Series Coupé	1: 87	Crimson Red non-metallic	80 41 0 407 227
BMW 3 Series Coupé	1: 87	Space Grey metallic	80 41 0 407 228
BMW 3 Series Coupé	1: 87	Black Sapphire metallic	80 41 0 407 230

Model	Scale	Colour	Item number
BMW 7 Series LCI E65 (Herpa)	1: 87	Sterling Grey metallic	80 41 0 403 521
BMW 7 Series LCI E65 (Herpa)	1: 87	Deep Green metallic	80 41 0 403 522
BMW 7 Series LCI E66 (Kyosho)	1: 18	Sterling Grey metallic	80 43 0 403 516
BMW 7 Series LCI E66 (Kyosho)	1: 18	Deep Green metallic	80 43 0 403 518
BMW 7 Series LCI E66 Individual (Kyosho)	1: 18	Blue Onyx metallic	80 43 0 403 519





**Joy**  
in every moment.  
BMW Collection



**Even the most beautiful drive usually comes to an end.**

To ensure that you continue feeling good after you've left your car, we've created a collection which will make you look great wherever you are. Quality clothing and accessories that are as useful as they are stylish. One example is our reliable all-weather jacket – perfect for when the evenings get cooler, and you can't just close the soft top over your head. Or our exclusive collector's mug, for a nice cup of coffee after a walk along the beach. Can there be a nicer commitment to driving pleasure?





**Ladies' T-Shirt.** Crewneck T-shirt. BMW logo embroidered on left sleeve hem. Standard fit. Material: 95% Cotton, 5% Lycra®.

	XS	S	M	L	XL
<b>White</b>					
80 14 0 397 -	854	855	856	857	858
<b>Dark Blue</b>					
80 14 0 397 -	844	845	846	847	848
<b>Black</b>					
80 14 0 397 -	839	840	841	842	843



**Ladies' Fleece Jacket.** Soft fleece jacket with embroidered BMW logo on left hem. Slim fit. Material: Double-sided fleece, 100% Polyester.

	XS	S	M	L	XL
<b>Dark Blue/ Powder White interior</b>					
80 14 0 412 -	852	853	854	855	856

**Ladies' "BMW" Fleece Jacket.** Soft fleece jacket with colour-matched "BMW" embroidery front left. Slim fit. Material: Double-sided fleece, 100% Polyester.

	XS	S	M	L	XL
<b>Powder White/ White interior</b>					
80 14 0 412 -	857	858	859	860	861

**Ladies' Polo Shirt.** Classic 3-button polo shirt. BMW logo embroidered on left sleeve hem. Standard fit. Material: 95% Cotton, 5% Lycra®, piqué.

	XS	S	M	L	XL
<b>White</b>					
80 14 0 396 -	603	604	605	606	607
<b>Dark Blue</b>					
80 14 0 412 -	872	873	874	875	876
<b>Black</b>					
80 14 0 396 -	593	594	595	596	597





**Ladies' "BMW" Polo Shirt.** Classic 3-button polo shirt with colour-matched "BMW" embroidery on left sleeve hem. Standard fit. Material: 95% Cotton, 5% Lycra®, piqué.

	XS	S	M	L	XL
<b>Powder White</b>					
80 14 0 412 -	862	863	864	865	866
<b>Brocade Red</b>					
80 14 0 412 -	867	868	869	870	871
<b>Eden Green</b>					
80 14 0 412 -	847	848	849	850	851



**Men's Fleece Sweater.** Fleece sweater with stand-up collar and half-zipper front. Embroidered BMW logo front left. Loose fit. Material: Double-sided fleece, 100% Polyester.

	S	M	L	XL	XXL
<b>Dark Blue/ Brocade Red interior</b>					
80 14 0 412 -	832	833	834	835	836
<b>Black</b>					
80 14 0 412 -	827	828	829	830	831



**Men's "BMW" Polo Shirt.** Classic 2-button polo shirt with colour-matched "BMW" embroidery front left. Standard fit. Material: 95% Cotton, 5% Lycra®, piqué.

	S	M	L	XL	XXL
<b>Brocade Red</b>					
80 14 0 412 -	837	838	839	840	841
<b>Eden Green</b>					
80 14 0 412 -	842	843	844	845	846

**Men's T-Shirt.** Crewneck T-shirt with BMW logo embroidery on left sleeve hem. Standard fit. Material: 95% Cotton, 5% Lycra®.

	S	M	L	XL	XXL
<b>White</b>					
80 14 0 397 -	427	428	429	430	431
<b>Dark Blue</b>					
80 14 0 397 -	422	423	424	425	426
<b>Black</b>					
80 14 0 397 -	417	418	419	420	421



**Men's Polo Shirt.** Classic 2-button polo shirt. BMW logo embroidered on left sleeve hem. Standard fit. Material: 95% Cotton, 5% Lycra®, piqué.

	S	M	L	XL	XXL
<b>White</b>					
80 14 0 396 -	538	539	540	541	542
<b>Dark Blue</b>					
80 14 0 396 -	528	529	530	531	532
<b>Black</b>					
80 14 0 396 -	523	524	525	526	527



**All-Weather Jacket.** Unisex. All-weather 2-in-1 jacket, with concealed hood in collar and detachable body warmer. Wind and waterproof, sealed seams. Adjustable drawstring in hem. Embroidered BMW logo on left hem. Loose fit. Material: Sympatex/Polyester.

	XS	S	M	L	XL	XXL
<b>Black</b>						
80 12 0 412 -	809	810	811	812	813	814



**Rain Jacket.** Unisex. Reliable rain jacket with sealed seams and concealed hood in collar. Wind and waterproof. Tunnel drawstring in hem. Embroidered BMW logo on left hem. Loose fit. Material: 100% Nylon.

	XS	S	M	L	XL	XXL
<b>Dark Blue</b>	80 120 412 - 821	822	823	824	825	826
<b>Black</b>	80 120 412 - 815	816	817	818	819	820



**Cap with "BMW" Lettering.** Classic baseball cap with colour-matched "BMW" embroidery on left front. Material: 100% Cotton, twill.

	One Size
<b>Powder White</b>	80 160 412 879
<b>Brocade Red</b>	80 160 412 880



**Cap with BMW Logo.** Classic baseball cap with BMW logo embroidery on centre front. Material: 100% Cotton, twill.

	One Size
<b>White</b>	80 160 412 878
<b>Dark Blue</b>	80 160 412 877
<b>Black</b>	80 160 396 627





**M Collection Men's Polo Shirt.** Classic 3-button polo shirt. M logo badge at left sleeve hem. Placket with fashionable decorative stripes. Standard fit. Material: 95% Cotton, 5% Lycra®, piqué.

	S	M	L	XL	XXL
<b>Black</b> 80 14 0 415 -	867	868	869	870	871



**M Collection Men's T-Shirt.** Crewneck T-shirt. M logo badge at left sleeve hem. Standard fit. Material: 95% Cotton, 5% Lycra®.

	S	M	L	XL	XXL
<b>Black</b> 80 14 0 415 -	872	873	874	875	876



**M Collection Cap.** Black cotton cap with M logo and sporty decorative stripes. Material: 100% Cotton.

<b>Black</b>	One Size
80 16 0 417 332	



**M Collection Jacket.** Sports jacket with sealed seams. Wind and waterproof. M logo badge front left. Loose fit. Material: 100% Nylon.

	XS	S	M	L	XL	XXL
<b>Black</b> 80 12 0 396 -	630	631	632	633	634	635



**M Collection Umbrella.** Umbrella with specially reinforced carbon frame and wooden handle with black paint finish. Teflon-coated polyester silk fabric. BMW M logo.

<b>Black</b>	One Size
80 23 0 413 102	



**M Collection Pin Badge.** Metal pin badge, with 3D curvature and coloured enamel. Attaches with a stick pin and round clutch.

80 56 0 391 652



**M Collection CFRP Keyring Pendant.** Carbon keyring pendant. High-gloss nickel-plating. With tricolour M logo.

80 23 0 305 916



**Collector's Mugs.** High-quality porcelain mug with handle. Holds about 0.35 l. Exclusive BMW Design.

<b>BMW 1 Series</b>	80 56 0 391 165
<b>BMW 3 Series Sedan, new</b>	80 56 0 396 814
<b>BMW 5 Series Sedan</b>	80 56 0 391 167
<b>BMW 6 Series Coupé</b>	80 56 0 391 168
<b>BMW 7 Series</b>	80 56 0 391 169
<b>BMW Z4</b>	80 56 0 391 171
<b>BMW X3</b>	80 56 0 391 170
<b>BMW X5</b>	80 56 0 396 817



**Design Lighter.** A refillable lighter with a typical BMW design. Chrome-plated, with Piezo ignition and coloured 3D logo. The flame is triggered by a slide mechanism, with infinitely variable adjustment.

80 23 0 305 925



**Entry Lighter.** A refillable lighter featuring quality materials and excellent workmanship. Chrome-plated surfaces for a classy metal feel. With BMW logo and infinitely variable adjustment.

80 23 0 305 924



**Keyring Pendant.** High-gloss nickel-plating. With tricolour BMW logo.

<b>BMW Logo</b>	80 23 0 305 911
<b>BMW 1 Series</b>	80 23 0 305 914
<b>BMW 3 Series</b>	80 23 0 136 287
<b>BMW 5 Series</b>	80 23 0 136 288
<b>BMW 6 Series</b>	80 23 0 305 915
<b>BMW 7 Series</b>	80 23 0 136 289
<b>BMW 7 Series</b>	80 23 0 149 151
<b>BMW Z4</b>	80 23 0 301 903
<b>BMW X3</b>	80 23 0 305 912
<b>BMW X5</b>	80 23 0 305 913





**In yachting, it's not just the wind and the waves that determine success.**

Your team and strategy, your endurance and ambition, your passion and performance are equally vital when it comes to winning. In fact, success begins with choosing the right materials. Continuous innovation is of key importance here – not just in yacht design, but also in designing crew gear. That's why all the textiles used in the BMW ORACLE Racing Collection are manufactured in collaboration with Henri Lloyd, the team's Technology Partner. This guarantees top-class functional performance and durability, as well as an exclusive sense of style.





**Yachting Fleece Jacket for Men.**  
Navy blue fleece jacket with white side inserts and 3M reflective piping on the side panels and sleeves, with a stand-up collar, a two-way zip at the front, two handwarmer front pockets with concealed zips, and an adjustable hem with an elastic cord. The front has an embroidered BMW ORACLE logo on the left and an embroidered Henri Lloyd logo on the right. The back features embroidered "BMW ORACLE Racing" lettering centred on the nape of the neck. The left sleeve features a GGYC logo badge. 100% polyester.

	S	M	L	XL	XXL
80 30 0 411 -	451	452	453	454	455



**Yachting Sportsbag.** Navy blue sports-bag, featuring a big main compartment with zip, an inner mesh pocket integrated in the lid, a small zip side pocket, two outer side pockets with zips, a detachable, adjustable shoulder strap with non-slip shoulder padding, and padded carry handles left and right. No metal studs on underside, to prevent damage to vulnerable deck surfaces. Embroidery: Henri Lloyd and BMW ORACLE Racing logo. BMW ORACLE Racing logo outside, GGYC logo inside. Capacity: 45 litres approx. Material: 100% polyurethane nylon. Dimensions (L x W x H): 60 x 30 x 22 cm approx.

**80 30 0 412 379**

**Yachting Fleece Jacket for Ladies.**  
White fleece jacket with navy blue side inserts and 3M reflective piping on the side panels and sleeves, with a stand-up collar, a two-way zip at the front, and two handwarmer front pockets with concealed zips. The front has an embroidered BMW ORACLE logo on the left and an embroidered Henri Lloyd logo on the right. The back features embroidered "BMW ORACLE Racing" lettering centred on the nape of the neck. The left sleeve features a GGYC logo badge. 100% polyester.



	XS	S	M	L	XL
80 30 0 411 -	498	499	500	501	502



**Yachting Cap.** Navy blue cap featuring a blue strap with a metal fastener and 3M reflective sandwich piping; with an embroidered BMW logo and ORACLE logo on the front, a printed Henri Lloyd logo and GGYC logo on the sides, and embroidered "BMW ORACLE Racing" lettering on the back. 100% nylon tadel.

**80 30 0 412 377**





# Formula Fashion.

BMW Sauber F1 Team Collection



## The look of passion.

With the BMW Sauber F1 Collection by Puma and the BMW Sauber F1 Team Collection, you are always a top contender. Both on the track and in life. High-quality garments featuring superb workmanship and pleasant, functional materials make sure of it. So get ready: the race is on!



**Men's Track Jacket.** Dark blue jacket with white piping, stand-up collar, front zip, knitted cuffs and knitted waistband inserts, front slant pockets, comfort fit. Front: printed team logo. Left sleeve: printed PUMA cat. Back: PUMA cat printed at the nape of the neck. 66% cotton, 34% polyester.



	S	M	L	XL	XXL
80 300 403 -	866	867	868	869	870

**Team Lanyard.** Blue, white and red key holder lanyard, woven-in lettering, removable metal clip in the shape of the race car's nose, key ring.

80 300 411 684



**Ladies' Track Jacket.** Dark blue jacket, white knitted collar and cuffs, knitted waistband inserts, front zip, front pockets with white piping, breast pocket, slim fit. Front: PUMA wheel design in white flocked print on the breast pocket. Right sleeve: printed team logo. Back: PUMA cat printed at the nape of the neck. 66% cotton, 34% polyester.

	XS	S	M	L	XL
80 300 403 -	901	902	903	904	905



**Team Cap.** Blue 5-panel cap, peak with red sandwich piping and white underside, embroidered team logo on the front, team web address woven into the fastening strap, covered inner seams printed with team logo, fastener with innovative Soft Touch surface and raised nose cone design. Fabric: 100% cotton, herringbone.

80 300 409 801



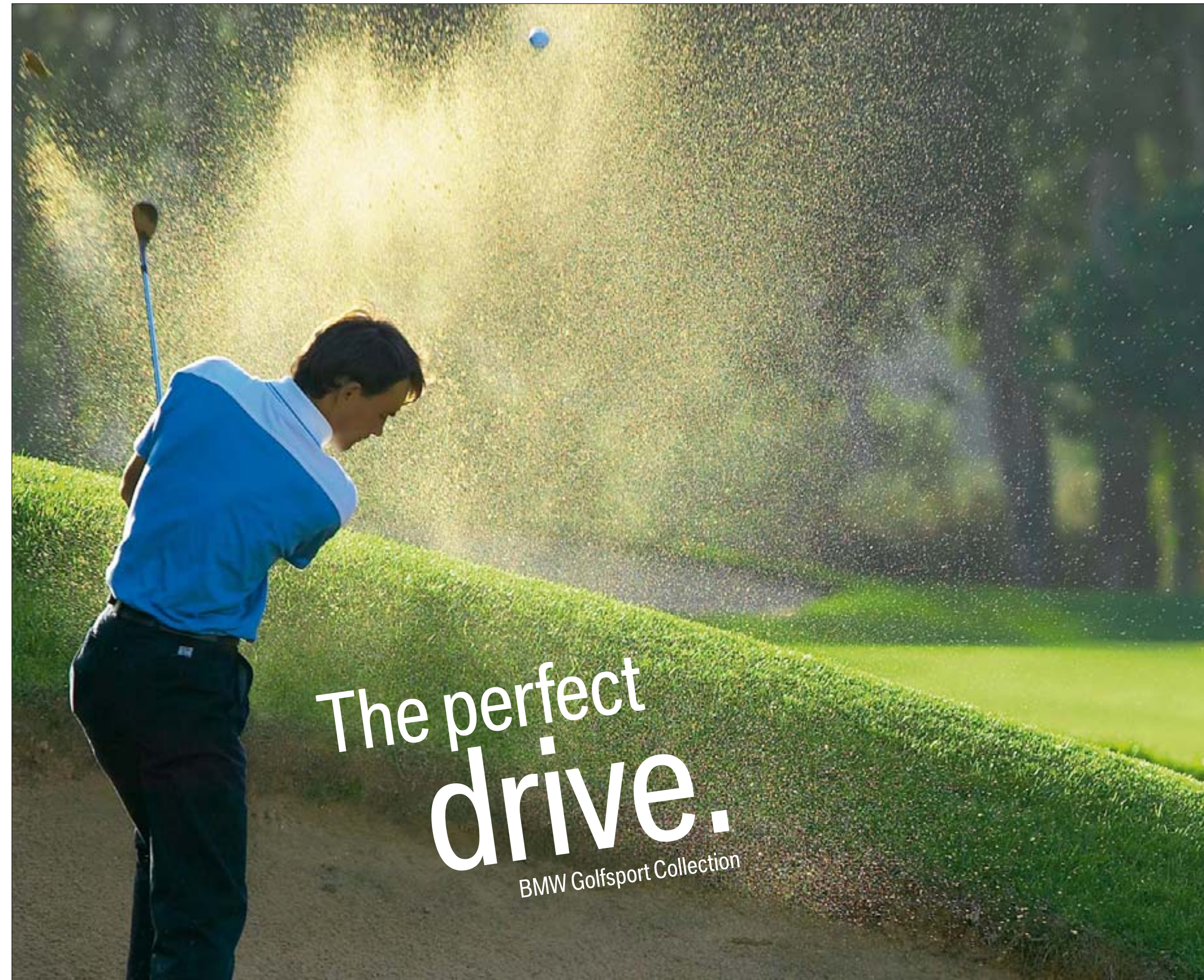


**F1 Team Sled with Carrier Bag.** Racing in the snow: with a unique sled. This one-piece plastic sled, featuring a quintessential racing design, can cope with high speeds and is very easy to handle. On any type of snow. The sled is made of polyethylene, which makes it extraordinarily sturdy and remarkably fast. It comes with a handy carrier bag, so it is easy to transport – whether on foot or in your luggage compartment. And of course the BMW Sauber F1 Team Sled also comes with a full TÜV test certificate (CE/GS). Weight: approx. 4 kg. Dimensions (L x W x H): 89 x 40 x 21 cm approx.

80 93 0 421 026







The perfect  
**drive.**  
BMW Golfsport Collection



**The perfect accessory  
for your next round of golf.**

The handy equipment from the BMW Golfsport Collection provides you with everything you need for a successful tee-off and a promising day on the course. Spice up your round with BMW golf balls, and original BMW golf tees. Enjoy the game!





**High-end Golf Ball.** White, 3 "Titleist PTS So/lo" balls. Print: "BMW Golfsport" in grey and BMW propeller logo in colour.

**80 33 0 393 065**

**Standard Golf Ball.** White, 3 Pinnacle "Gold Distance" balls. Print: "BMW Golfsport" in grey and BMW propeller logo in colour.

**80 33 0 393 066**



**Golf Club Towel.** 38 x 52 cm, dark blue, 100% woven cotton velour, discreet Jacquard border in denim blue and white, with metal hook.

**80 33 0 394 014**



**Rain Cover.** Dark blue, 100% nylon. Rain cover, protects trolley bags, ultra-light, foldable, waterproof with quick-fastener. Print: "BMW Golfsport" in white and BMW propeller in colour.

**80 33 0 394 015**

**Golf Club Bag.** Dark blue, with denim blue piping, 100% polyester. With practical, lined inside pockets, side pocket for golf balls with BMW Golfsport badge and BMW propeller stud, suitable for 2 to 3 clubs, total length approx. 123 cm.

**80 33 0 393 061**



**Golf Umbrella.** Blue golf umbrella with contrasting stripes in dark and denim blue, hook and loop closure with address field, fibreglass ribs, hard foam handle, "BMW Golfsport" and propeller logos printed on cover, BMW propeller depicted on handle. Dark blue, 100% polyester.

**80 33 0 394 012**



**Green Set.** Dark blue, 100% nylon, with pitchfork, tees, pencil, metal snaplink, score-card holder on back, laser-engraved BMW logo on pitchfork. Print: "BMW Golfsport" on front.

**80 33 0 393 062**



**Pitchfork.** Stainless steel look, 100% zinc die-cast, with high-gloss, nickel-plated, magnetic stainless steel ball marker with BMW Golfsport design, laser-engraved BMW propeller on back.

**80 33 0 393 063**

**5 Golf Tees.** White, 100% birch wood. Print: "BMW Golfsport" in grey on shaft.

**80 33 0 393 064**



**Golf Shoe Bag.** 60% polyester and 40% acrylics, with denim blue piping, bottom with ventilation eyelets, side and front pocket, mesh side compartment, foam carrier handle, main compartment lined with self-cleaning acrylic fibre fur fabric, address field in front pocket, BMW Golfsport badge, BMW logo stud. Dark blue.

**80 33 0 392 650**

**Drinks Bottle.** Aluminium drinks bottle, sand-coloured, with screw top, aluminium snaplink, and "BMW Golfsport" imprint in grey. Dark blue neoprene layer for heat insulation, with BMW Golfsport badge and BMW propeller stud, 0.75-litre capacity.

**80 33 0 394 016**



# The most convenient way to discover BMW Lifestyle.

Can't get enough? Would like to see more? Just ask your local BMW dealer about BMW Lifestyle products. Or visit us on the internet, at [www.bmw-shop.com](http://www.bmw-shop.com), where you can shop around the clock.

Individual brochures for BMW Bikes and Equipment, BMW Miniatures, BMW Sauber F1 Team and BMW ORACLE Racing are available from your dealer and are also available as downloads on the Internet, at [www.bmw-shop.com](http://www.bmw-shop.com)

