



PERFORM THE PROCEDURE OUTLINED IN THIS SERVICE INFORMATION ON ALL AFFECTED VEHICLES THE NEXT TIME THEY ARE IN THE SHOP FOR MAINTENANCE OR REPAIRS.

SUBJECT

Voluntary Emissions Recall Campaign 10E-A02: N54 Inspection and Replacement of Injectors

MODEL

E60, E61, E71, E82, E88, E90, E92, and E93 with the N54 engine produced from 04/02/2007 through 10/31/2008

SITUATION

The piezo injectors may cause misfire faults with erratic engine operation.

AFFECTED VEHICLES

This Emissions Recall involves E60, E61, E71, E82, E88, E90, E92, and E93 vehicles with N54 engines which were produced from 04/02/2007 through 10/31/2008.

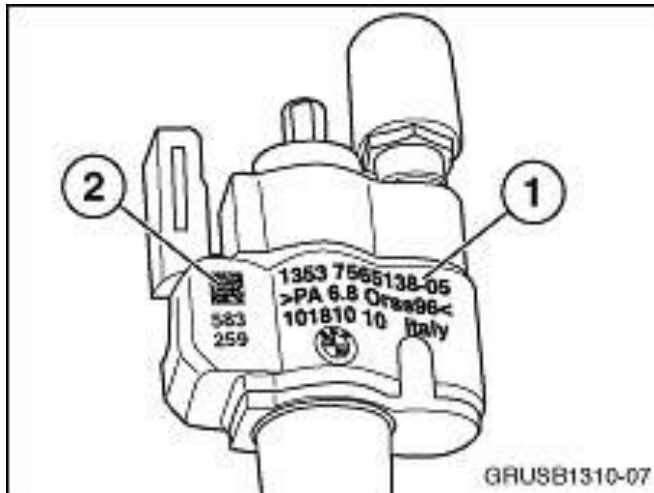
In order to determine whether a specific vehicle has had this Emissions Recall Campaign completed or is affected by this Recall Campaign, first check whether the Recall Completion Label, SD 92-406, is attached to the right (passenger) rear side of the hood in the engine compartment, close to the windshield. If the label is found, the Campaign has already been performed. If the Recall Completion Label is not present, it will be necessary to utilize the "Service Menu" of DCSnet (Dealer Communication System) or the Key Reader. Based on the response of the system, either proceed with the corrective action or take no further action. Copy of the customer letter is attached.

CORRECTION

Check the injectors' production date/serial numbers (using the DMC scanner) and replace if required.

PROCEDURE

1. Remove the engine's acoustic cover following REP11 00 "Remove and refit/replace ignition-coil cover (N54/N54T)".



2. Check each injector's part number and index number (indicated as # 1), which are located on the injectors' plastic housing facing the ignition coil.

3. **IMPORTANT:**

Injectors with P/N **13 53 7 585 261 04-08** index are not affected by this Service Action and should not be replaced.

Injectors with PN/index **13 53 7 537 317-xx** or **13 53 7 565 138-01** up to **7 565 138-07** must be carefully removed in a sequential order (following REP13 53 310) and marked with the cylinder number.

4. Obtain the DMC (Data Matrix Code) scanner P/N 83 30 2 211 622, which has already been shipped to your center specifically for this Service Action (refer to tools [SIB04 30 10](#)).

5. Prior to first usage, the DMC scanner needs to be configured:

Connect the scanner to the USB port of the workshop's PC. Using the attached configuration sheet; scan all 4 bar code symbols. Audible signals after each scanning would indicate correct readout of the scanner. Once successfully completed, configuration does not need to be repeated.

6. With the DMC scanner connected to the workshop PC, from the CenterNet page, open the **ASAP Portal**, and then select **Service/Technic** and **DMC Injector Check**.

7. From the DMC Injector Check, select **Start** and then enter the vehicle's last seven digits of the VIN, the mileage, and then continue with **Enter DMC Injectors**.
8. **The injector's data code must be entered for all six cylinders in a sequential order (from cylinder 1 to 6).**

For the injectors already removed, scan the rectangular bar code located in the upper left part of the plastic housing, next to the injectors' part number (indicated as # 2 in the illustration). The 34 or 36-digit line should appear in the corresponding cylinder's line.

If the displayed code shows "#####...", select **Unreadable** from the bottom menu bar and proceed to the next cylinder.

For the cylinders which did not require an injector removal per step 3 above, press **Skip** from the bottom menu bar and proceed to the next cylinder.

9. After all 6 cylinders' fields are filled out, continue with **Check** selected from the bottom menu bar.
10. Defective or "unreadable" injectors are going to be marked "**Replace**" (red field). Use P/N **13 53 7 585 261** for the replacement.

Injectors identified as "**OK**" (green field) should NOT be replaced, but they should be reinstalled into corresponding cylinders after replacement of the PTFE Sealing ring (P/N 13 53 7 584 315) and decoupling element (P/N13 53 7 564 751), following REP 13 53 310.

11. After data matrix determination is completed, store the data by pressing "**End (save data)**", selected from the bottom menu bar.
12. Obtain the replacement injectors (P/N 13 53 7 585 261) from your parts department and register them back into the database. Press the "**Replace defective injectors**" button from the bottom menu bar and scan each new injector into the corresponding cylinder's field. After all new replacement injectors are registered (the data matrix code of replacement injectors is marked green), select "**Save results**" from the bottom menu bar.

Note:

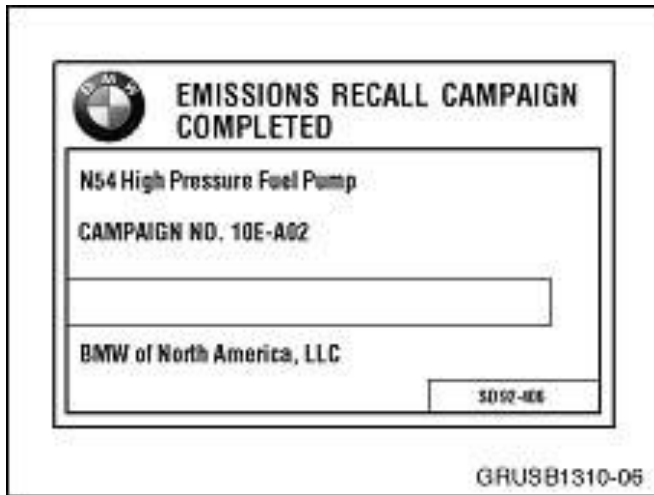
Detailed description of the injectors' scanning and registering process can be found in DMC Injector Check/Manual Index Check from the ASAP Portal.

13. After installation, the new injectors must be calibrated using ISTA/D Service Functions as per REP13 53 310.

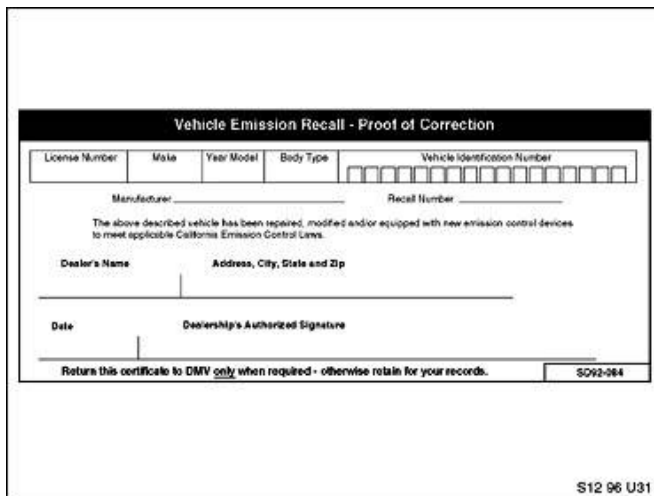
PARTS INFORMATION

| Part Number | Description | Quantity |
|-----------------|-------------------------------|----------------------|
| 13 53 7 585 261 | Piezo injector | As required, up to 6 |
| 13 53 7 564 751 | Injectors' decoupling element | As required, up to 6 |
| 13 53 7 584 315 | Injectors' PTFE seal | As required, up to 6 |

LABEL INSTRUCTIONS



After the vehicle has been checked and corrected, obtain a label (SD 92-406) and with a ball point pen print your dealer code (5 digits) on the Recall Completion Label (see illustration). An initial quantity of 200 labels will be sent to all BMW centers. Peel the label from its backing and affix it to the right (passenger) rear side of the hood in the engine compartment, close to windshield.



For California centers only: It is required by the California Code of Regulations that an executed orange "Vehicle Emission Recall - Proof of Correction" certificate (SD92-084, see illustration) be provided to each customer (for vehicles registered in the state of California), once the Recall on his or her vehicle has been completed.

Note: Additional labels can be ordered online at BMW TIS.

WARRANTY INFORMATION

The repair described in this bulletin is covered under warranty regardless of time or mileage. Reimbursement for this Recall will be via normal claim entry utilizing the following information:

Defect Code: 00 13 96 01 00

| Labor Operation: | Labor Allowance: | Description: |
|-------------------------|-------------------------|--|
| 00 59 784 | Refer to KSD2** | Remove engine's acoustic cover; check injectors' part numbers. No removal is required. |
| 00 59 785 | Refer to KSD2** | Remove engine's acoustic cover; check injectors' part numbers. Remove, scan and refit/replace all 6 injectors. |
| 00 59 786 | Refer to KSD2** | Remove engine's acoustic cover; check injectors' part numbers. Remove, scan and refit/replace 5 injectors |
| 00 59 787 | Refer to KSD2** | Remove engine's acoustic cover; check injectors' part numbers. Remove, scan and refit/replace 4 injectors. |
| 00 59 788 | Refer to KSD2** | Remove engine's acoustic cover; check injectors' part numbers. Remove, scan and refit/replace 3 injectors. |
| 00 59 789 | Refer to KSD2** | Remove engine's acoustic cover; check injectors' part numbers. Remove, scan and refit/replace 2 injectors. |
| 00 59 790 | Refer to KSD2** | Remove engine's acoustic cover; check injectors' part numbers. Remove, scan and refit/replace 1 injector. |

** Labor time allowances can be located in the KSD2 by entering the VIN, clicking on the **Search** button and then entering the listed flat rate in the **FR code** field.

ATTACHMENTS

view PDF attachment [B131410 Customer Letter](#).

view PDF attachment [B131410 Scanner Configuration](#).