

**Sport Package:** Enhance the 535i xDrive Sports Wagon's athletic good looks inside and out with shadowline exterior trim, a three-spoke leather-wrapped multi-function sport steering wheel, and 20-way power multi-contour front seats. Optional 18 x 8.0 Star Spoke (Style 124) alloy wheels with 245/40 run-flat performance tires<sup>1</sup> and a space-saver spare add to its already dynamic performance.

<sup>1</sup>Due to low-profile tires, please note: wheels, tires and suspension parts are more susceptible to road hazard and consequential damages. Performance tires not recommended for driving in ice and snow. Spare is a space-saver wheel and tire.



**Shadowline trim** gives a sporty look to front and rear side-window frames, window recess finishers, and door-sill trim strips.

**M Sport Package:** For a more aggressive presence, start with shadowline exterior trim, then add attention-grabbing Double Spoke (Style 135M) 18-inch light alloy wheels with performance tires,<sup>1</sup> and an Aerodynamic package with front and rear fascias and lower side moldings. Inside, 20-way power multi-contour front seats complement the 3-spoke, leather-wrapped multi-function M sport steering wheel; polished aluminum M footrest; door-sill strips with the M emblem and polished chrome inserts; and an attractive Anthracite headliner. Those who opt for the slick-shifting, 6-speed manual transmission will find even greater driving enjoyment with the shorter throw of the gear shift lever.



**18 x 8.0 Double Spoke (Style 135M) light alloy wheels with 245/40 run-flat performance tires<sup>1</sup>** add to the 535i xDrive Sports Wagon's athletic looks and performance.



**Door sills** emblazoned with the M emblem and polished chrome inserts welcome you into the special interior.



**3-spoke leather-wrapped multi-function sport steering wheel** lets you keep both hands on the wheel while adjusting various comfort functions, such as radio stations, CD selections and volume.



**20-way power multi-contour front seats** provide optimum lateral support during tight cornering, while remaining exceptionally comfortable when driving over long distances. In addition to Active Head Restraints, the seats offer individual power adjustment for backrest and seat-bottom angle; forward/backward and up/down position; thigh, upper back and lumbar support; and adjustable sides.



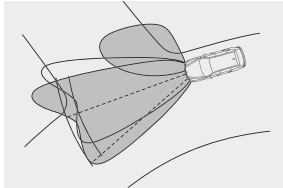
**M sport steering wheel** provides excellent grip, with its thicker, leather-wrapped rim and pronounced thumb profile. Multi-function buttons let you adjust various comfort functions, such as radio stations, CD selections and volume, as well as initiate and answer **Bluetooth®** enabled mobile phone calls (if so equipped).



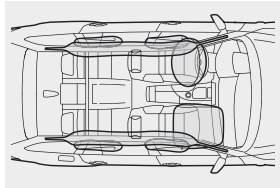
**M footrest** provides a firm grip in wet weather, while the polished aluminum face adds to the interior's sporty good looks.



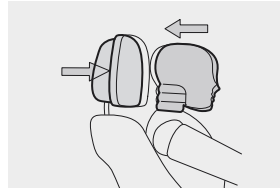
**M Sport manual gear shift lever** is covered in leather with a chrome ring at the base. Shorter than the standard manual gear lever, it lets you change gears faster and gives a much sportier feel.



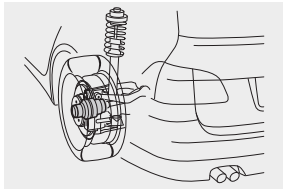
**Xenon Adaptive Headlights** automatically swivel to follow the curves of the road. The system uses data from on-board sensors and the steering wheel angle to determine the vehicle's direction, then adjusts the headlights accordingly. The system offers outstanding nighttime vision.



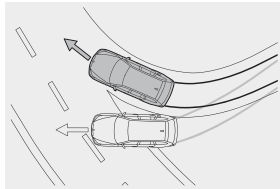
In the event of a collision, **BMW's Advanced Safety System** determines which airbags to deploy. These include driver's and passenger's front airbags with advanced technology; front-door-mounted side-impact airbags; and HPS (Head Protection System), which is designed to help protect passengers in both front and rear compartments. Rear-seat side-impact airbags are available as an option.<sup>1</sup>



**Active Head Restraints** in the front seats reduce the risk of whiplash or neck/head/spine injury. When two sensors detect a rear-end collision, the headrests rapidly and automatically pivot forward, supporting driver's and front-seat occupant's heads. (Included with optional 20-way multi-contour seats.)



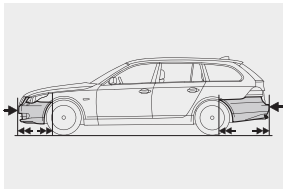
**Tire Pressure Monitor** is an electronic control system designed to warn the driver if there is a sudden and irregular loss of tire pressure. Should the target pressure of a tire fall below 25%, a warning light alerts the driver.



**Dynamic Stability Control (DSC) with Dynamic Traction Control (DTC)** is a suspension control system that, when it senses an impending skid or loss of vehicle control, helps to stabilize the vehicle in milliseconds. If the system senses over- or understeer, it modulates engine power and can apply brakes individually to help keep the vehicle under control and going in the intended direction.



**xDrive** is BMW's intelligent all-wheel-drive system. xDrive continually monitors the vehicle's driving condition by using readings from the Dynamic Stability Control sensors and the gas pedal. This data is then used to vary power distribution between the front and rear axles, ensuring agile, neutral and forgiving handling.



**Impact-absorbing bumpers** and compressible "crush tubes" front and rear help absorb the force of impact in collisions up to nine mph, minimizing damage to the vehicle's body and simplifying repairs. Only at higher impact speeds do structural supports begin to deform, dissipating impact energy to help protect occupants.



**BMW restraint system** for the driver and front passenger combines three-point safety belts, automatic safety-belt pretensioners and head restraints. This system helps provide optimum restraint in a collision.



**Battery Safety Terminal** disconnects the starter cable from the battery in milliseconds after a serious collision, minimizing the risk of an electrical fire. The fuel supply is also cut off automatically. However, warning flashers, interior lights and power windows remain connected.

<sup>1</sup> Please note: These pictures of airbags are for illustrative purposes only. Depending upon the type of accident, none, some or all airbags may deploy.

For details on the availability of standard and optional features, please refer to the Standard equipment | Optional equipment charts at the back of this brochure.

	<b>555i xDrive</b>
--	--------------------

Performance and efficiency	
3.0-liter dual overhead cam (DOHC), 24-valve inline turbocharged 300-horsepower 6-cylinder engine with twin-turbo technology, piezo direct injection, and Double-VANOS steplessly variable valve timing	●
Direct ignition system with knock control	●
Electronically controlled engine cooling (map cooling)	●
6-speed manual transmission	●
6-speed STEPTRONIC automatic transmission with Sport and Manual shift modes and Adaptive Transmission Control (ATC)	▲

Handling, ride and braking	
Aluminum double-pivot-type front suspension	●
Aluminum 4-link integral rear suspension	●
Front and rear anti-roll (stabilizer) bars	●
Aluminum front and rear subframes	●
Twin-tube gas-pressure shock absorbers	●
4-wheel ventilated anti-lock disc brakes (ABS) with Dynamic Brake Control (DBC)	●
Vehicle-speed-sensitive variable-assist (Servotronic), variable-ratio power steering	●
Dynamic Stability Control (DSC), including Brake Fade Compensation, Start-off Assistant, Brake Drying, and Brake Stand-by features; with Dynamic Traction Control (DTC)	●
xDrive all-wheel-drive system	●
Hill Descent Control (HDC)	●
M Sport manual gear shift lever	■

Exterior and aerodynamics	
17 x 7.5 V Spoke (Style 277) alloy wheels, 225/50 all-season tires (spare is a space-saver wheel and tire)	●
18 x 8.0 Star Spoke (Style 124) alloy wheels, 245/40 run-flat performance tires <sup>1</sup> (requires Sport Package; spare is a space-saver wheel and tire)	○
18 x 8.0 Double Spoke (Style 135M) alloy wheels, 245/40 run-flat performance tires <sup>1</sup> (spare is a space-saver wheel and tire)	■
Xenon Adaptive Headlights with dynamic auto-leveling, Cornering Lights function and Corona headlight-rings	●
Automatic headlight control	●
High-beam Assistant	○
Halogen free-form foglights	●
High-pressure retractable headlight cleaning system	★
Low-liftover tailgate with separately opening rear window	●
Roof rails	●
Rear-window wiper/washer	●

- Standard
- Optional
- Included in optional M Sport Package
- ◇ Included in optional Sport Package
- ▲ Included in optional Premium Package
- ▲ No-cost option
- ★ Included in optional Cold Weather Package

	<b>555i xDrive</b>
--	--------------------

Exterior and aerodynamics (Continued)	
Park Distance Control (front and rear) with graphic display	○
Rain-sensing windshield wipers with adjustable speed	●
Power-adjustable, heated, body-color side-view mirrors	●
Metallic paint	▲
Chrome Line exterior trim	●
Aerodynamic package (includes front air dam, rear apron, and side skirts)	■
Shadowline exterior trim	■□

Comfort and convenience	
Automatic climate control with separate left/right temperature and air distribution controls, with automatic air recirculation	●
Micro-filter ventilation system with replaceable active charcoal filters	●
Panoramic moonroof with fully automatic, two-piece glass panel, power slide and lift control, trap release, wind deflector and power interior sunshade	●
Automatic tilt-down of passenger's side-view mirror (when car is shifted into reverse gear)	◇
Automatic tailgate operation	●
Power tilt and telescopic steering wheel with automatic tilt-up	●
Power windows with key-off and "one touch" up and down operation both front and rear, anti-trapping feature, opening from remote, and closing from exterior lock	●
Manual rear side-window sunshades with 2 shade sections per door	○
Keyless entry with multi-function remote control	●
Comfort Access keyless entry with multi-function remote control	○
Interior courtesy lights with automatic-dimming function	●
Front map lights and rear reading lights with separate controls for the left and right	●
Automatic-dimming interior rear-view mirror and power-folding exterior side-view mirrors	◇
Dual front sun visors with illuminated mirrors	●
Dual cupholders in front and rear	●
3-stage heated front seats (requires Dakota Leather upholstery or Premium Package)	○★
2-stage heated rear seats (requires Cold Weather Package; also requires Dakota Leather upholstery or Premium Package)	○
Heated steering wheel	★
Fully finished cargo area with tool kit and interior tailgate release	●
Integrated 3-button Universal garage-door opener	◇
Storage area under the cargo floor with adjustable dividers	●
Power outlet in front passenger's footwell, back of center console, and in cargo area	●
Glove compartment with rechargeable take-out flashlight	●
Ski bag	★

<sup>1</sup> Due to low-profile tires, please note: wheels, tires and suspension parts are more susceptible to road hazard and consequential damages. Performance tires not recommended for driving in ice and snow.

	<b>535i xDrive</b>
--	--------------------

Interior seating and trim	
Leatherette upholstery	●
Dakota Leather upholstery and door trim (includes seat surfaces, armrests in center console and doors, headrests for front seats and outer rear seats, and gear shift lever boot)	○◇
10-way power front seats with power head restraints	●
4-way power lumbar support for front seats	●
20-way power multi-contour front seats (includes articulated upper backrest, passenger's-seat memory, Active Head Restraints, and adjustable side and thigh support; requires Dakota Leather upholstery or Premium Package)	○■□
Memory system for driver's seat, side-view mirrors, and steering wheel position	●
Open storage compartments in all doors and front seatback storage	●
Adjustable front center armrest	●
Dual center console compartments with provision for phone handset	●
Anthraxite headliner	■
Polished aluminum M footrest	■
Door sills with BMW M logo and polished chrome inserts	■

Instrumentation and controls	
3-spoke leather-wrapped multi-function steering wheel with controls for audio system, cruise control, and Bluetooth <sup>®</sup> wireless communication for hands-free mobile phone (if so equipped) <sup>2</sup>	●
3-spoke leather-wrapped multi-function M sport steering wheel includes thicker rim and pronounced thumb profile, with controls for audio system, cruise control, and Bluetooth wireless communication for hands-free mobile phone (if so equipped) <sup>2</sup>	■
3-spoke leather-wrapped multi-function sport steering wheel with controls for audio system, cruise control, and Bluetooth wireless communication for hands-free mobile phone (if so equipped) <sup>2</sup>	□
Electronic analog speedometer and tachometer and LCD main and trip odometers	●
Check Control vehicle monitor system	●
Start/Stop button	●
Head-up Display (HUD) (requires BMW Navigation system)	○
Night Vision (requires Navigation system and Cold Weather Package)	○
iDrive system with on-board computer and Controller, and 6 programmable memory buttons	●
Exterior temperature display with alarm for freezing temperatures	●
Dynamic Cruise Control	●
Active Cruise Control (ACC) with Stop & Go <sup>3</sup> (requires STEPTRONIC automatic transmission)	○
BMW Navigation system with Voice Command System, Real Time Traffic Information and HD Radio <sup>TM</sup>	○
Vehicle & Key Memory	●
Tire Pressure Monitor	●

- Standard
- Optional
- Included in optional M Sport Package
- Included in optional Sport Package
- ◇ Included in optional Premium Package
- ▲ No-cost option
- ★ Included in optional Cold Weather Package
- △ Dealer-installed accessory

	<b>535i xDrive</b>
--	--------------------

Audio system	
Anti-theft AM/FM stereo/CD audio system with 10 speakers, Auto-Store, FM diversity antenna system, and MP3 capabilities	●
Logic7 sound system with 13 speakers, Surround Sound, and Digital Sound Processing (including 2 subwoofers)	○
iPod <sup>®</sup> and USB adaptor (includes cable connector)	○
6-disc CD changer mounted in glove compartment	△
Auxiliary audio input	●
HD Radio with "multicast" FM station reception (included with BMW Navigation system)	○
SIRIUS Satellite Radio with one-year subscription <sup>4</sup>	○/△

Safety and security	
Driver's and passenger's front airbag supplemental restraint system (SRS) with advanced technology: dual-threshold, dual-stage deployment; and front-passenger seat sensors designed to prevent unnecessary airbag deployment	●
Front- and rear-seat Head Protection System	●
Front side-impact airbags	●
Rear-seat side-impact airbags and automatic pretensioners on rear outboard safety belts	○
Lane Departure Warning feature that alerts the driver of an improper lane-changing maneuver <sup>5</sup> (requires Premium Package)	○
Front safety belts with automatic pretensioners	●
Active Head Restraints in front seats	●
Automatic locking retractors (ALR) on all passenger-seat safety belts (for installation of child-restraint seats)	●
Interlocking door anchoring system to help protect against door intrusion in side impacts	●
BMW's Advanced Safety System for integrated deployment of safety features	●
Impact sensor that activates Battery Safety Terminal disconnect of alternator, fuel pump and starter from battery; and turns on hazard lights, interior lights and unlocks doors	●
Coded Driveway Protection – a feature that constantly changes the electronic key/ignition code; prevents the engine from starting without using the right key	●
Remote keyless entry security alarm system with selective unlocking and double-lock feature (programmed at BMW center), remote trunk opening, interior motion detector, and panic feature	●
Adaptive Brake Lights	●
BMW Assist <sup>TM</sup> with Bluetooth wireless technology for hands-free calling (with Bluetooth compatible mobile phone <sup>6</sup> ), phonebook downloading and speech recognition capabilities (see page 66 for full details)	●

BMW Services	
BMW Ultimate Service <sup>TM6</sup>	●

<sup>2</sup>Please contact your authorized BMW center or visit [bmwusa.com](http://bmwusa.com) for a list of BMW-approved Bluetooth enabled mobile phones.

<sup>3</sup>Active Cruise Control is not a substitute for the driver's own responsibility in adjusting speed and otherwise controlling the vehicle. After evaluating the road, traffic and visibility conditions, the driver must decide whether and how the system is used.

<sup>4</sup>Please visit your authorized BMW center for details on equipment and services requirements.

<sup>5</sup>Requires clearly definable lane markings that are not obscured by rain, snow, etc. Lane Departure Warning feature is not a substitute for the driver's own responsibility in maintaining safe control of the vehicle.

<sup>6</sup>For full details on BMW Ultimate Service, including exclusions and limitations, see page 66.

	<b>535i xDrive</b>
--	--------------------

Premium Package	
Dakota Leather upholstery and door trim	○◇
Integrated 3-button Universal garage-door opener	◇
Automatic-dimming interior rear-view mirror and power-folding exterior side-view mirrors	◇
Automatic tailgate operation	◇

Sport Package (requires Dakota Leather upholstery or Premium Package)	
3-spoke leather-wrapped multi-function sport steering wheel with controls for audio system, cruise control, and Bluetooth wireless communication for hands-free mobile phone (if so equipped) <sup>2</sup>	□
20-way power multi-contour front seats (includes articulated upper backrest, passenger's-seat memory, Active Head Restraints, and adjustable side and thigh support)	○■□
Shadowline exterior trim	■□
18 x 8.0 Star Spoke (Style 124) alloy wheels, 245/40 run-flat performance tires <sup>7</sup> (requires Sport Package; spare is a space-saver wheel and tire)	○

M Sport Package (requires Dakota Leather upholstery or Premium Package)	
3-spoke leather-wrapped multi-function M sport steering wheel includes thicker rim and pronounced thumb profile, with controls for audio system, cruise control, and Bluetooth wireless communication for hands-free mobile phone (if so equipped) <sup>2</sup>	■
20-way power multi-contour front seats (includes articulated upper backrest, passenger's-seat memory, Active Head Restraints, and adjustable side and thigh support)	○■□
18 x 8.0 Double Spoke (Style 135M) alloy wheels, 245/40 run-flat performance tires <sup>7</sup> (spare is a space-saver wheel and tire)	■
Aerodynamic package (includes front air dam, rear apron, and side skirts)	■
Shadowline exterior trim	■□
M Sport manual gear shift lever	■
Polished aluminum M footrest	■
Door sills with BMW M logo and polished chrome inserts	■
Anthraxite headliner	■

Cold Weather Package	
3-stage heated front seats (requires Dakota Leather upholstery or Premium Package)	○★
Heated steering wheel	★
High-pressure retractable headlight cleaning system	★
Ski bag	★

	<b>535i xDrive</b>
--	--------------------

Stand-alone optional equipment	
6-speed STEPTRONIC automatic transmission with Sport and Manual shift modes and Adaptive Transmission Control (ATC)	▲
18 x 8.0 Star Spoke (Style 124) alloy wheels, 245/40 run-flat performance tires <sup>7</sup> (requires Sport Package; spare is a space-saver wheel and tire)	○
Park Distance Control (front and rear) with graphic display	○
Dakota Leather upholstery and door trim (includes seat surfaces, armrests in center console and doors, headrests for front seats and outer rear seats, and gear shift lever boot)	○◇
Light Poplar Wood interior trim	▲
Bamboo Anthracite Wood interior trim	▲
Pentan Aluminum interior trim (requires M Sport Package)	▲
20-way power multi-contour front seats (includes articulated upper backrest, passenger's-seat memory, Active Head Restraints, and adjustable side and thigh support; requires Dakota Leather upholstery or Premium Package)	○□
Manual rear side-window sunshades with 2 shade sections per door	○
Comfort Access keyless entry with multi-function remote control	○
3-stage heated front seats (requires Dakota Leather upholstery or Premium Package)	○★
2-stage heated rear seats (requires Cold Weather Package; also requires Dakota Leather upholstery or Premium Package)	○
Logic7 sound system with 13 speakers, Surround Sound, and Digital Sound Processing (including 2 subwoofers)	○
iPod and USB adaptor (includes cable connector)	○
HD Radio with "multicast" FM station reception (included with BMW Navigation system)	○
SIRIUS Satellite Radio with one-year subscription <sup>4</sup>	○
High-beam Assistant	○
Head-up Display (HUD) (requires BMW Navigation system)	○
Night Vision (requires Navigation system and Cold Weather Package)	○
Active Cruise Control (ACC) with Stop & Go <sup>3</sup> (requires STEPTRONIC automatic transmission)	○
BMW Navigation system with Voice Command System, Real Time Traffic Information and HD Radio	○
Rear-seat side-impact airbags and automatic pretensioners on rear outboard safety belts	○
Lane Departure Warning feature that alerts the driver of an improper lane-changing maneuver <sup>5</sup> (requires Premium Package)	○

<sup>7</sup>Due to low-profile tires, please note: wheels, tires and suspension parts are more susceptible to road hazard and consequential damages. Performance tires not recommended for driving in ice and snow.

		535i x Drive
--	--	--------------

Weight			
Unladen			
Manual transmission	lbs		4101
STEPTRONIC automatic transmission	lbs		4145
Weight distribution, front/rear			
Manual transmission	%	49.2/50.8	
STEPTRONIC automatic transmission	%	49.2/50.8	

Engine			
Liter/type			3.0 inline 6
Bore/stroke	inch		3.31 x 3.53
Nominal output/rpm	hp		300/5800
Max. torque/rpm	lb-ft		300/1400-5000
Compression ratio	:1		10.2
Fuel grade			unleaded premium

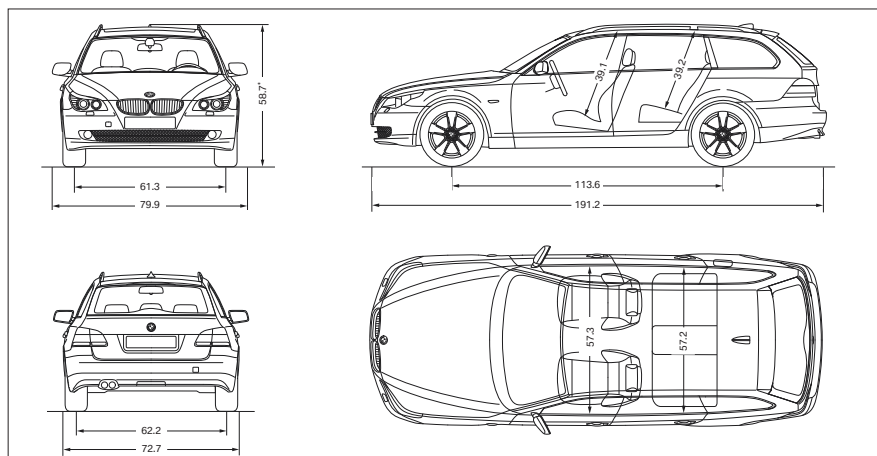
Transmission			
Manual gear ratios			
I/II/III :1		4.06/2.40/1.58	
IV/V/VI/R :1		1.19/1.0/0.87/3.68	
	Final drive ratio :1		3.08
STEPTRONIC automatic gear ratios			
I/II/III :1		4.17/2.34/1.52	
IV/V/VI/R :1		1.14/0.87/0.69/3.40	
	Final drive ratio :1		3.48

Performance			
Drag coefficient	C <sub>d</sub>		0.33
Top speed <sup>1</sup>	mph		150
Acceleration 0-60 mph <sup>2</sup>			
Manual transmission	sec		5.7
STEPTRONIC automatic transmission	sec		5.8

Fuel consumption <sup>3</sup>			
Manual transmission			
City/highway	mpg		16/23
STEPTRONIC automatic transmission			
City/highway	mpg		16/24
Fuel capacity	gal		18.5

Tires and wheels			
Tire dimensions	standard		225/50
Wheel dimensions	standard		17x7.5
Material	standard		alloy

Brakes			
Front - diameter	in		13.7
Rear - diameter	in		13.6



Illustrations above: All dimensions in inches. \*Includes height of roof rails and antenna.

<sup>1</sup> Top speed limited electronically.  
<sup>2</sup> BMW AG test results. Actual acceleration results may vary, depending on specification of vehicle; road and environmental conditions; testing procedures and driving style. These results should be used for comparison only and verification should not be attempted on public roads. BMW urges you to obey all posted speed laws and always wear safety belts.  
<sup>3</sup> EPA-estimated figures are for comparison purposes only. Your actual mileage will vary, depending on speed, driving habits, trip length and driving conditions; actual mileage will most likely be lower.

## Equipped with the best ideas. Original BMW Accessories.

Driving a BMW is always a special experience, which can be enhanced even further with Original BMW Accessories. Benefit from innovative solutions combining unique ideas, stunning design and supreme functionality. Discover the wide range of Original BMW Accessories

available to you, enhancing such vehicle aspects as the exterior, interior, technology, transporters, protection and details to customize your vehicle. For additional information on BMW Accessories, please visit your authorized BMW center or our online website at [bmwusa.com](http://bmwusa.com).

