

Original BMW Accessory. Installation Instructions.



Round Vision Retrofit BMW 5 Series Saloon (E60)

Retrofit kit no.: 66 21 0 420 510 Round Vision Retrofit

Installation time

The installation time is **approx. 4.0 to 5.0 hours**. This may vary depending on the condition of the car and the equipment in it.

Cars without AUX socket only

In general the car must be upgraded to the latest I stage status by flashing before starting the work. Depending on the production age of the car and the work already carried out on the car, the programming times will vary, which means that we cannot quote a specific time at this point.

The installation time does not include any time for programming/encoding, as this depends on the age of the car and the equipment in it.

Cars with AUX jack only

This retrofit system does not require coding.

Important information

These installation instructions are primarily designed for use within the BMW dealership organisation and by authorised BMW service companies.

In any event, the target group for these installation instructions is specialist personnel trained on BMW cars with the appropriate specialist knowledge.

All work must be completed using the latest BMW repair manuals, circuit diagrams, servicing manuals and work instructions, in a rational order, using the prescribed tools (special tools) and observing current health and safety regulations.

If you experience installation or function problems, restrict troubleshooting to approx. 0.5 hours for mechanical work and 1.0 hour for electrical work.

In order to reduce costs and avoid any additional expense, send a query immediately to the Technical Parts Support via the Aftersales Assistance Portal (ASAP).

Please provide the following information:

- Chassis number
- Part number of the retrofit kit
- A precise description of the problem
- Work steps already carried out

Do not archive the hard copy of these installation instructions since daily updates are made by ASAP.

Pictograms



Denotes instructions that draw your attention to dangers.



Denotes instructions that draw your attention to special features.

◀ Denotes the end of the instruction or other text.

Installation information

In countries in which the picture playback is permitted up to a certain speed, the red cable from PIN 2 to branch **A1** must be disconnected, insulated and tied back.

Due to the large number of bumper trims, the installation of the Side View cannot be shown in detail for every equipment variant. The installation work is to be carried out in the same way.

Ensure that the cables and/or lines are not kinked or damaged as you install them in the car. The costs thereby incurred will not be reimbursed by BMW AG.

Auxiliary cables/lines that you install must be secured with cable ties.

If the specified PIN chambers are occupied, bridges, double crimps or twin-lead terminals must be used.

All pictures show LHD cars; proceed accordingly on RHD cars.

In most cases, after installation of the retrofit, repairs or a software update of the car, an image misalignment appears on the on-board monitor. In order to correct the picture offset the ACM Unit C must be initialized.

The initialization must be performed in accordance with the separate initialization instructions 01 29 0 432 055.

For cars without auxiliary socket, the retrofit must be programmed/coded using SSS (Software Service Station) via the **CIP, AUX IN connection retrofit** path after the installation.

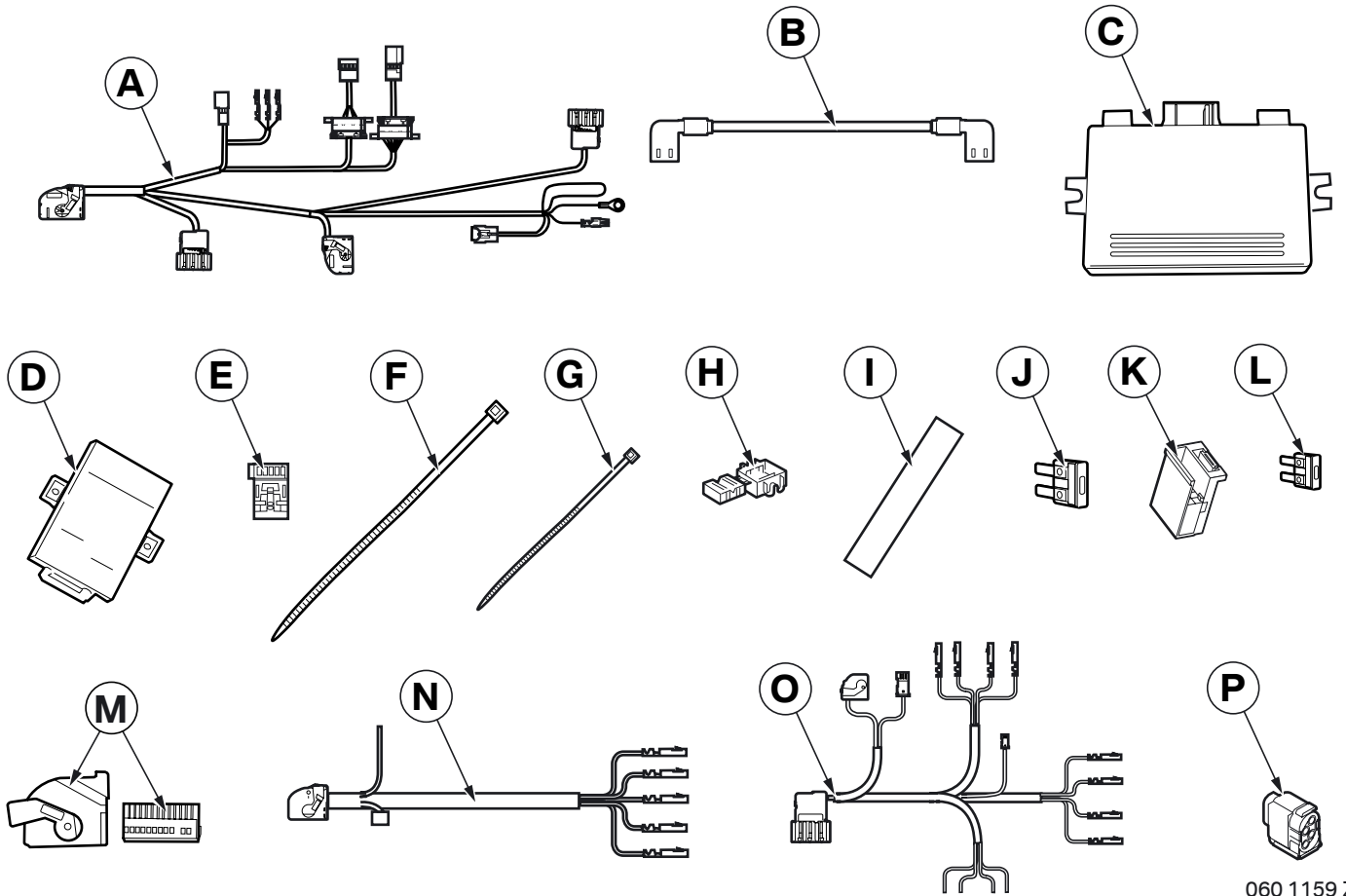
Special tools required

00 9 310, installation wedges

Contents

Section	Page
1. Parts list	4
2. Preparatory work	6
3. Retrofit cable ACM connection diagram	7
4. Rear view connection diagram	9
5. Side view connection diagram	10
6. Installation and cabling diagram, retrofit cable ACM	11
7. Installation and cabling diagram, rear view	12
8. Installation and cabling diagram, side view	13
9. Routing and connecting retrofit cable ACM	14
10. Connecting the power supply and connection cable	16
11. Fitting ACM Unit and Universal Can Interface	17
12. Installing the Rear View with button and control unit	19
13. Routing and connecting the Rear View wiring harness	21
14. Routing and connecting the side view wiring harness	23
15. Installing and connecting Side View	25
16. Concluding work and coding	27
17. Retrofit cable ACM circuit diagram	28
18. Rear view wiring harness circuit diagram	30
19. Side view wiring harness circuit diagram	32

1. Parts list

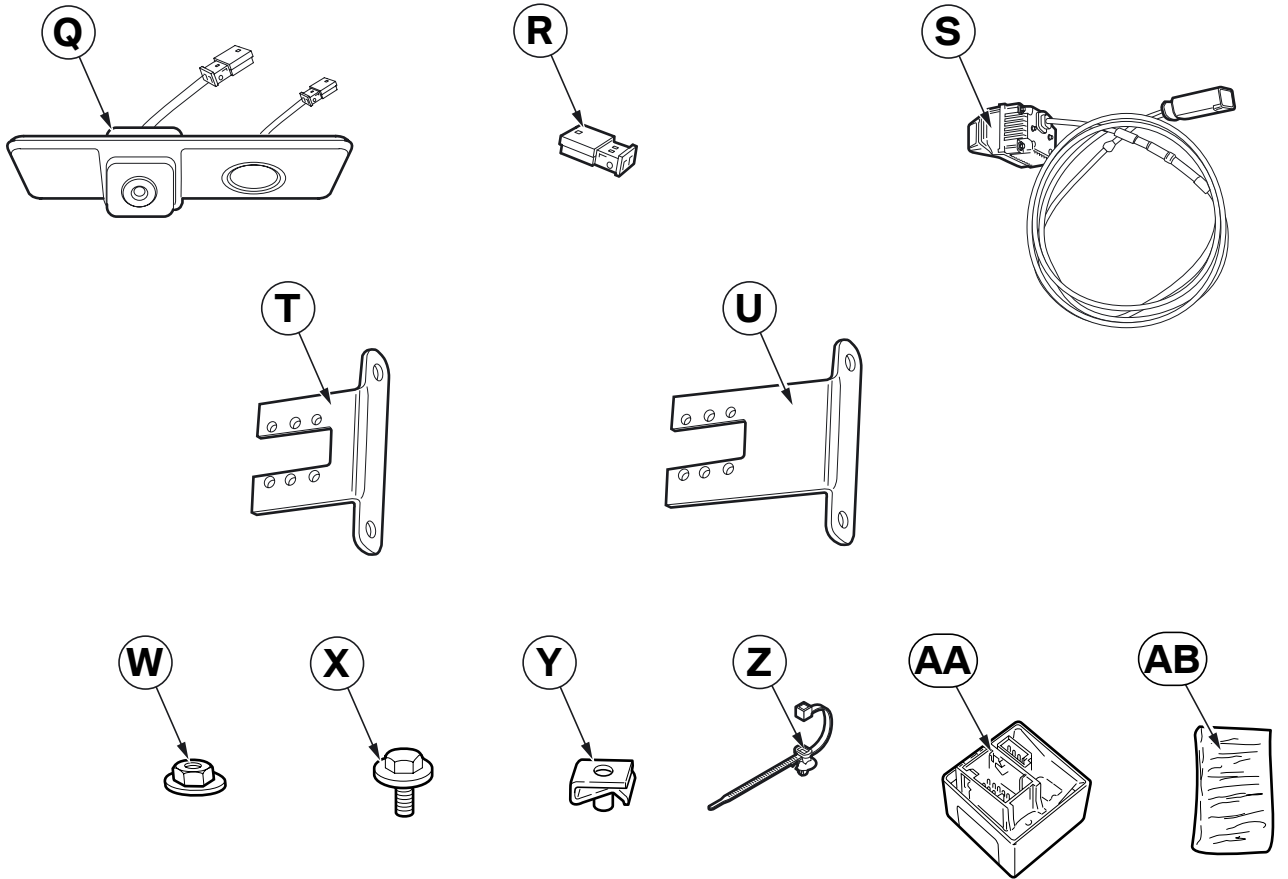


060 1159 Z

Legend

- A** Retrofit cable ACM
- B** Connection cable
- C** ACM Unit
- D** Universal CAN Interface
- E** Black 3-pin socket casing (cars with AUX socket only)
- F** Cable tie 445 x 4.8 mm (7x)
- G** Cable tie 200 x 3.6 mm (55x)
- H** Miniature connector (8x)
- I** Sealing strip (5x, not required)
- J** Fusible link 7.5 A (large)
- K** Black 12-pin socket casing
- L** Fusible link 7.5 A (small, not required)
- M** Black 18-pin socket casing
- N** Rear View wiring harness
- O** Side View wiring harness
- P** Black 18-pin socket casing

1. Parts list



060 1160 Z

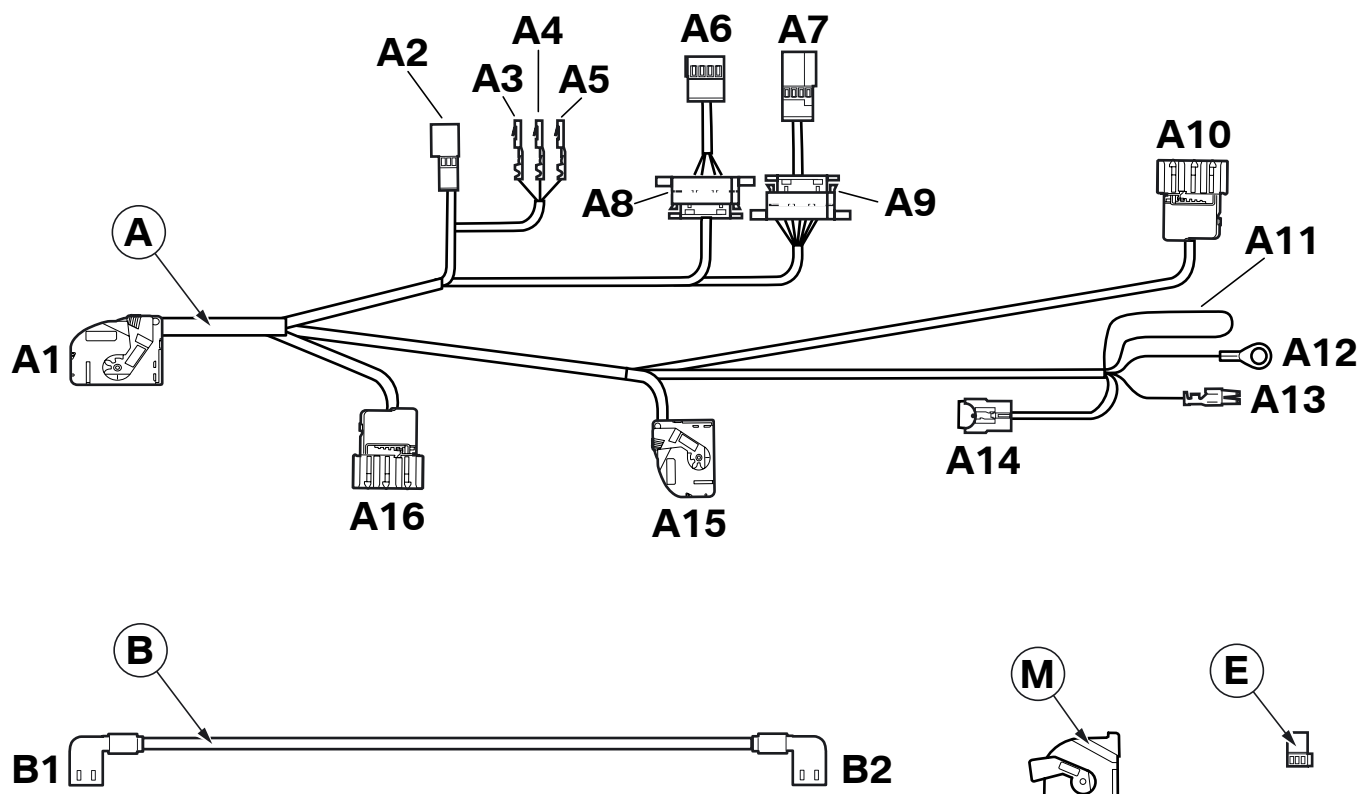
Legend

- Q** Rear View with button
- R** Green 2-pin plug casing
- S** Side View
- T** Holder
- U** Alternative holder
- V** Philips screw M2.5 x 5 mm (4x)
- W** Hexagonal nut with washer M5 (2x, not required)
- X** Hexagonal screw with washer M5 x 14 mm (2x)
- Y** Speed nut M5 (2x)
- Z** Cable tie holder (2x, not required)
- AA** Control module (2x)
- AB** Protective strip (2x)

2. Preparations

	TIS No.
Conduct a brief test	---
Disconnect the negative pole of the battery	12 00 ...
The following components must be removed first of all	
Front bumper trim	51 11 000
Ornamental grille (bottom centre) in bumper trim	51 11 180
Microfilter cover, left	64 31 010
Microfilter casing, left	64 31 061
Control display	65 82 050
M-ASK or CCC	65 83 010
Release the storage compartment	51 16 200
Pedal trim	51 45 185
Left oddments box	51 45 ...
Trim at the bottom right of the dashboard	51 45 181
Front door sill strip (interior), right and left	51 47 000
Rear door sill strips (interior), right and left	51 47 030
Side footwell trim on the A pillar, right and left	51 43 070
Trim for door pillar at the bottom, right and left	51 43 150
Backrest side section on left and right rear seats or backrests	52 ...
Left boot wheel arch trim	51 47 151
Luggage compartment wheel arch trim flap, right	---
Trim for the tailgate	51 49 000
Button for opening the boot-lid, no longer required	51 24 145

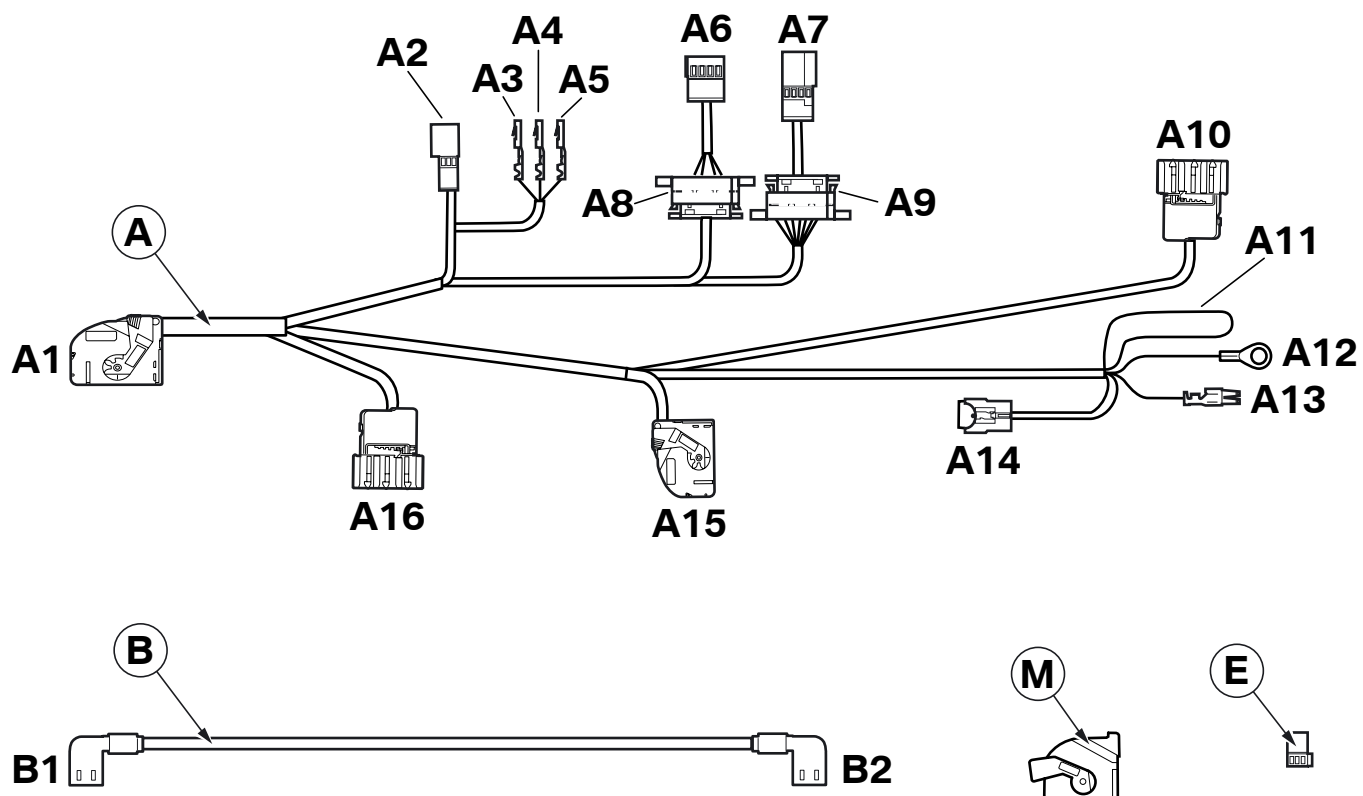
3. Retrofit cable ACM connection diagram



060 1161 Z

Branch /Item	Designation	Signal	Cable colour / Cross-section	Connection site in the car	Abbreviation / Slot
A	Retrofit cable ACM	---	---	---	---
A1	Black 32-pin socket casing	---	---	To the Universal Can Interface D	---
A2	Black 3-pin plug casing	---	---	Cars with AUX jack only With socket casing E to disconnected standard cables from M-ASK or CCC	X13813
A3	Socket contact	Audio L	SW 0.35 mm ²	To M-ASK or CCC	X13813 PIN 2
A4	Socket contact	Audio R	GE 0.35 mm ²	To M-ASK or CCC	X13813 PIN 7
A5	Socket contact	Audio GND	WS 0.35 mm ²	To M-ASK or CCC	X13813 PIN 8
A6	Black 4-pin socket casing	---	---	Not required	---
A7	Black 4-pin plug casing	---	---	Not required	---
A8	Black 8-pin plug	---	---	Remove connector and plug it into controller	X10387
A9	Black 8-pin plug	---	---	Remove connector and plug it into connector of cable to controller	X10387
A10	Black 18-pin plug casing	---	---	In the luggage compartment on the left	---
A11	Cable loop	Terminal 31	GE/RT 0.5 mm ²	Cars with M-ASK only Cut, insulate and tie back Cars with CCC only Tie back	---
A12	Ring eyelet, 6 mm	Terminal 31	BR 1.0 mm ²	With miniature connector H on brown/black cable of control display	X13822 PIN 3
A13	Socket contact	Terminal 30g	RT 1.0 mm ²	With miniature connector H on red/violet cable of control display	X13822 PIN 1
A14	Fuse holder	---	---	Tie back on wiring harness	---
A15	Black 26-pin socket casing	---	---	To ACM unit C	---
A16	Black 18-pin plug casing	---	---	With socket casing M to rear view wiring harness N and side view wiring harness O	---

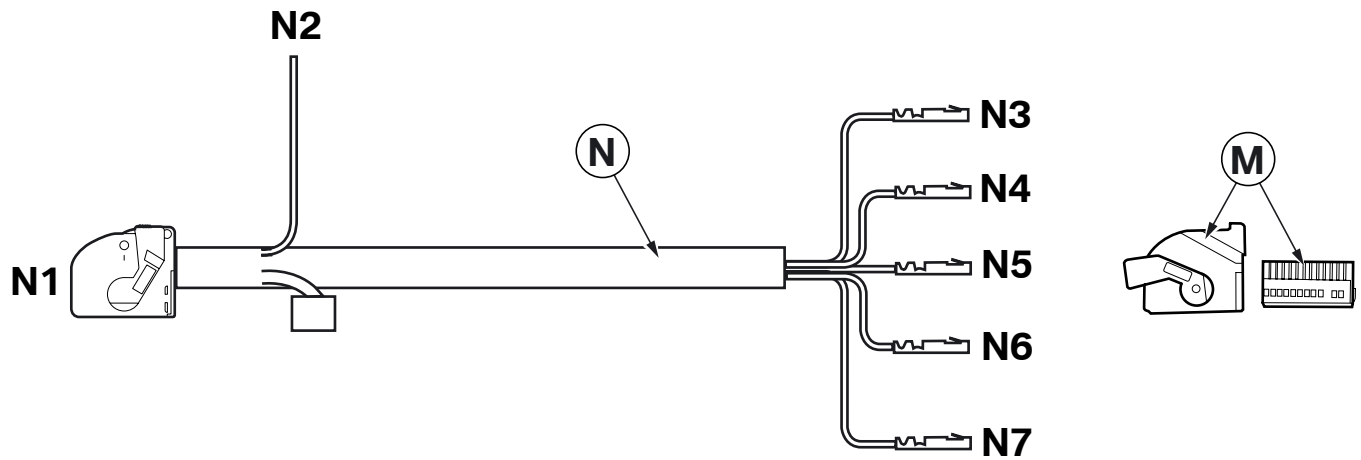
3. Retrofit cable ACM connection diagram



060 1161 Z

Branch /Item	Designation	Signal	Cable colour / Cross-section	Connection site in the car	Abbreviation / Slot
B	Connection cable	---	---	---	---
B1	Violet 10-pin socket casing	---	---	On control display	X13823
B2	White 10-pin socket casing	---	---	To ACM unit C	X13820
E	Black 3-pin socket casing	---	---	Cars with AUX jack only On branch A2	---
M	Black 18-pin plug casing	---	---	To branch A16	---

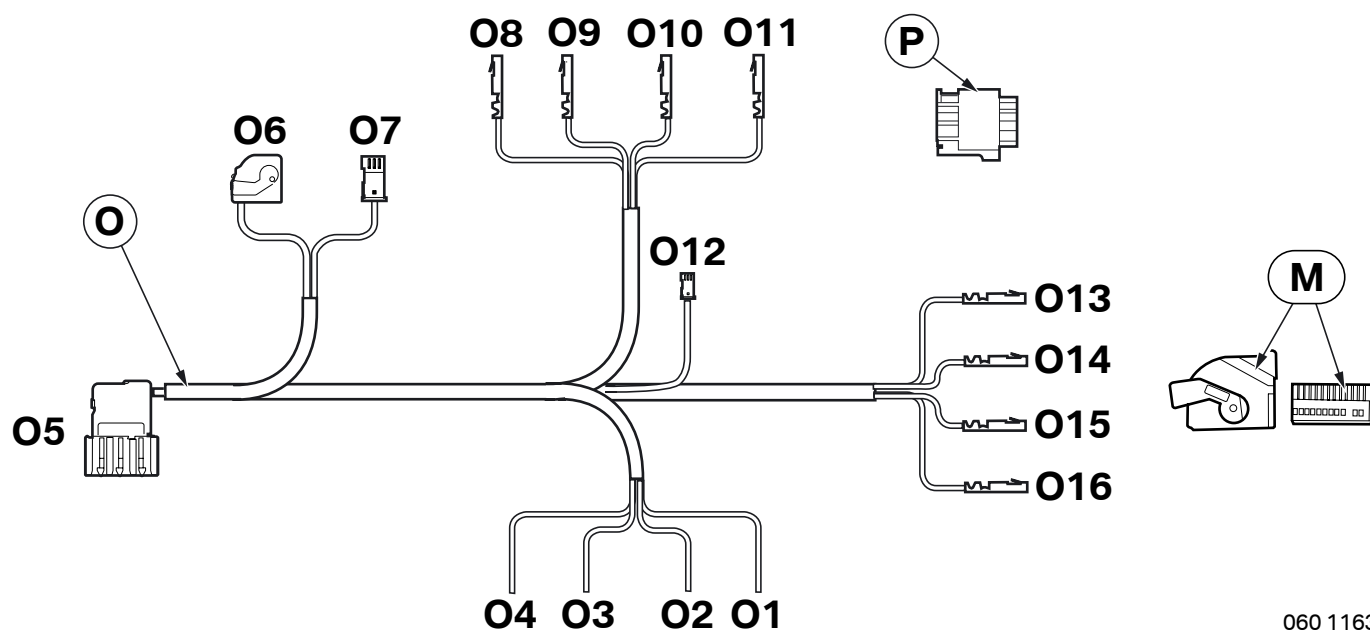
4. Rear view connection diagram



060 1162

Branch /Item	Designation	Signal	Cable colour / Cross-section	Connection site in the car	Abbreviation / Slot
N	Rear View wiring harness	---	---	---	---
N1	Black 12-pin socket casing	---	---	To control module AA	---
N2	Cable open	RFS	GN 0.35 mm ²	With miniature connector H to yellow/white cable from right reversing light	X318 PIN 3
N3	Socket contact	Video +	TR 0.14 mm ²	To socket casing M	PIN 17
N4	Socket contact	Video -	BR/SW 0.35 mm ²	To socket casing M	PIN 8
N5	Socket contact	Terminal 30g	RT 0.75 mm ²	With miniature connector H to red/blue cable from CAS control unit	X10318 PIN 1
N6	Socket contact	Terminal 31	BR 0.75 mm ²	With miniature connector H to brown or brown/violet cable from CAS control unit	X10318 PIN 25
N7	Socket contact	RFSg	GN 0.5 mm ²	Insulate and tie back	---
M	Black 18-pin socket casing	---	---	To branch A16 from retrofit cable ACM A	---

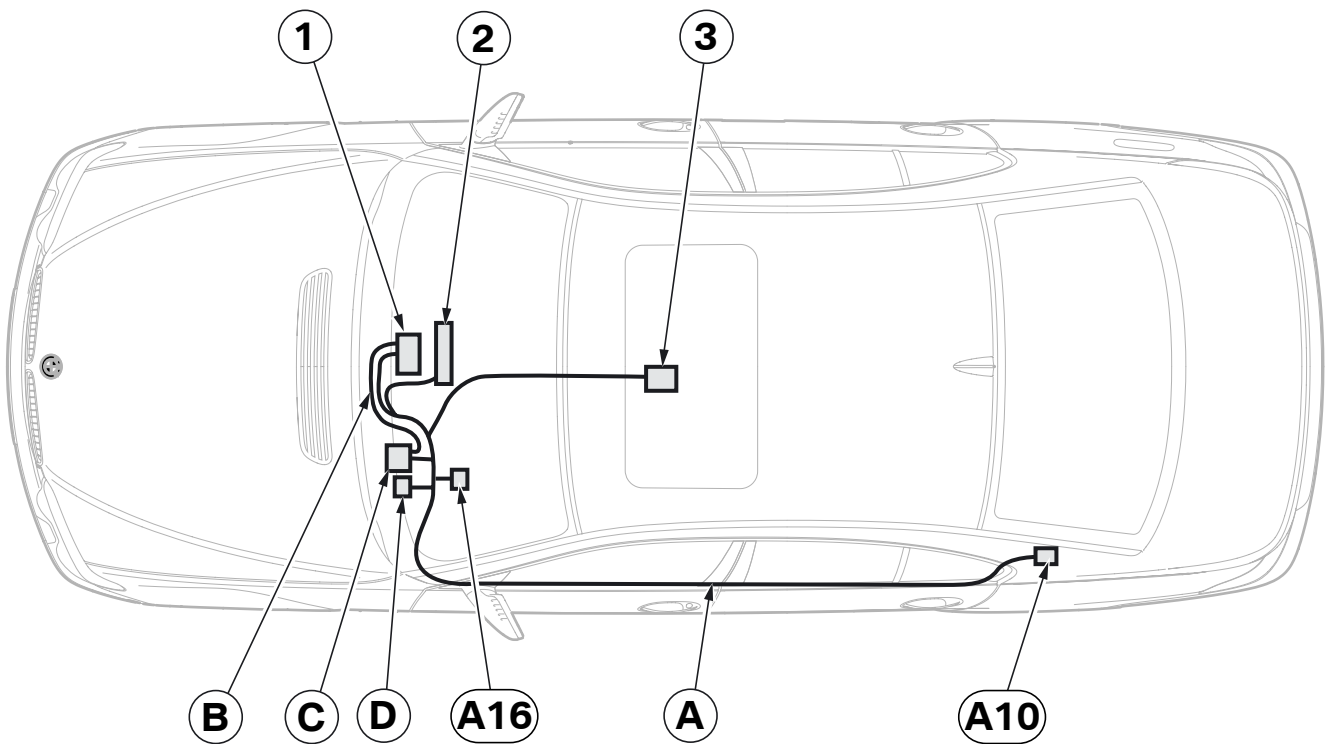
5. Side view connection diagram



060 1163 Z

Branch /Item	Designation	Signal	Cable colour / Cross-section	Connection site in the car	Abbreviation / Slot
O	Side View wiring harness	---	---	---	---
O1	Cable open	CAN_H	BL/SW 0.5 mm ²	Insulate and tie back	---
O2	Cable open	CAN_L	BL/BR 0.5 mm ²	Insulate and tie back	---
O3	Cable open	Terminal 30g	RT/WS 0.5 mm ²	With miniature connector H to red/blue cable from CAS control unit	X10318 PIN 1
O4	Cable open	Terminal 31	BR 0.5 mm ²	With miniature connector H to brown or brown/violet cable from CAS control unit	X10318 PIN 25
O5	Blue 18-pin plug casing	---	---	Insulate and tie back	---
O6	Black 12-pin socket casing	---	---	To control module AA	---
O7	Black 4-pin socket casing	---	---	To control module AA	---
O8	Socket contact	Video -	SW 0.35 mm ²	To socket casing P	PIN 1
O9	Socket contact	Video +	WS 0.35 mm ²	To socket casing P	PIN 2
O10	Socket contact	Terminal 31	BR 0.5 mm ²	To socket casing P	PIN 3
O11	Socket contact	+6V	RT 0.5 mm ²	To socket casing P	PIN 4
O12	Black 2-pin socket casing	---	---	Insulate and tie back	---
O13	Socket contact	Video -	SW 0.35 mm ²	To socket casing M	PIN 7
O14	Socket contact	Video +	WS 0.35 mm ²	To socket casing M	PIN 16
O15	Socket contact	BCC	RT/GE 0.5 mm ²	Insulate and tie back	---
O16	Socket contact	RFK	RT/GN 0.5 mm ²	Insulate and tie back	---
P	Black 4-pin socket casing	---	---	To the side view S	---
M	Black 18-pin socket casing	---	---	To branch A16 from retrofit cable ACM A	---

6. Installation and cabling diagram, retrofit cable ACM



060 1083 Z

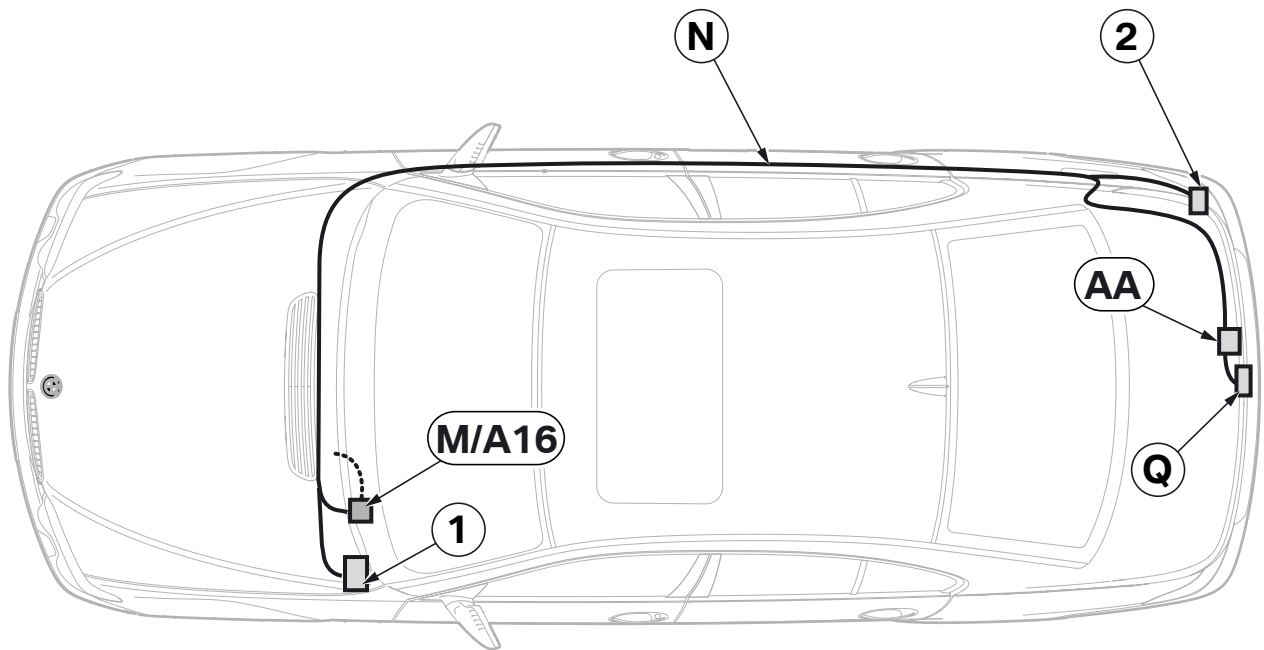
Legend

- A** Retrofit cable ACM
- B** Connection cable
- C** ACM Unit
- D** Universal CAN Interface

- A10** Black 18-pin plug casing
- A16** Black 18-pin plug casing

- 1** Control display, socket casing **X13823**
- 2** M-ASK or CCC, socket casing **X13813**
- 3** Controller, socket casing **X10387**

7. Installation and cabling diagram, rear view



060 1164 Z

Legend

A16 Black 18-pin plug casing from retrofit cable ACM

M Black 18-pin socket casing

N Rear View wiring harness

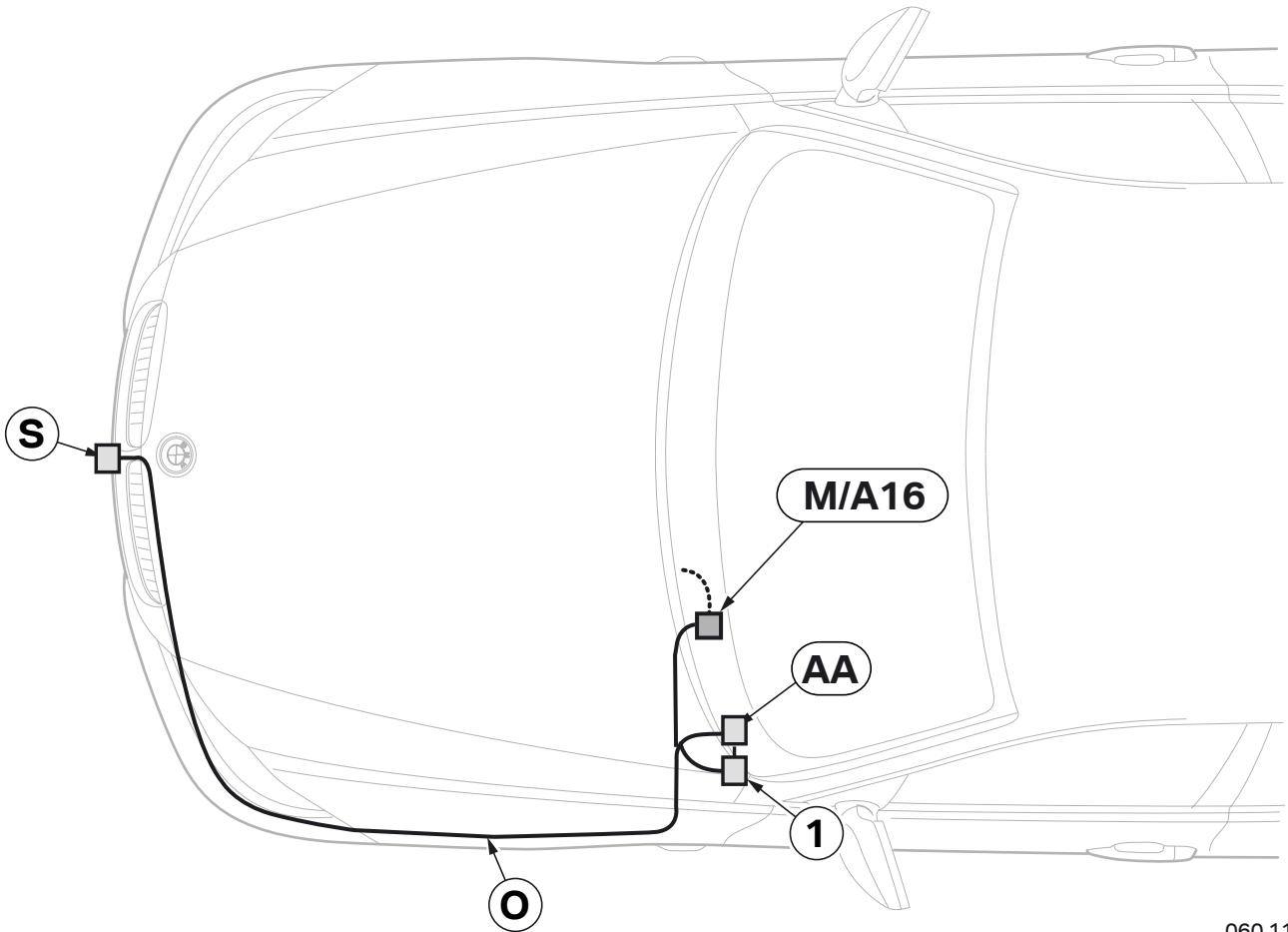
Q Rear View with button

AA Control module

1 Terminal 30g and terminal 31 tap on CAS control unit, socket casing **X10318**

2 RFS tap on reversing light, socket casing **X318**

8. Installation and cabling diagram, side view



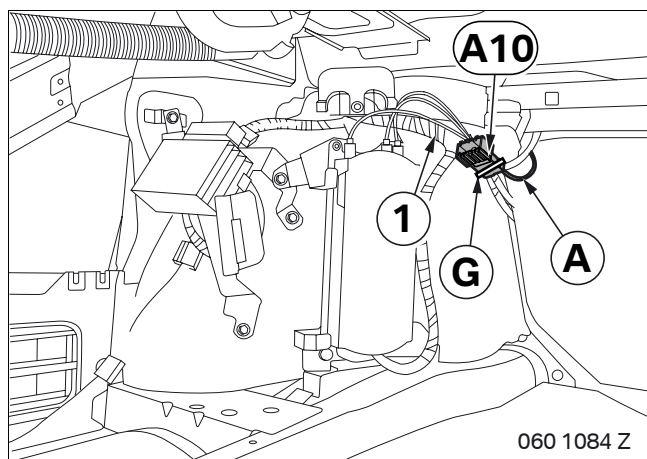
060 1165 Z

Legend

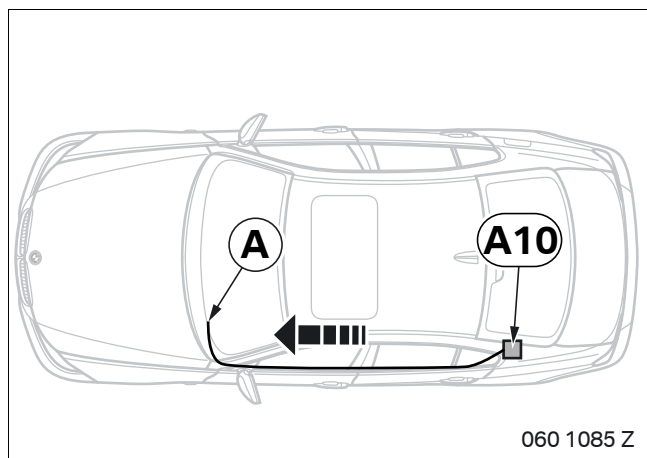
- A16** Black 18-pin plug casing from retrofit cable ACM
- M** Black 18-pin socket casing
- O** Side View wiring harness
- S** Side View
- AA** Control module

- 1** Terminal 30g and terminal 31 tap on CAS control unit, socket casing **X10318**

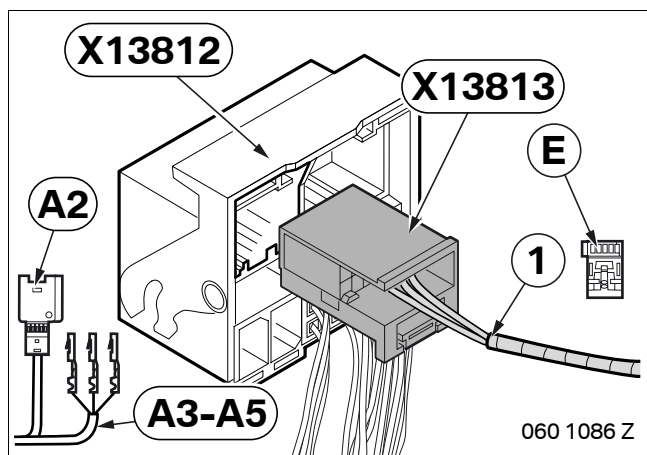
9. Routing and connecting retrofit cable ACM



Attach branch **A10** (black 18-pin plug casing) of the retrofit cable ACM **A** to the standard wiring harness (1) in the boot on the left using cable tie **G**.



Route all branches except branch **A10** of the retrofit cable ACM **A** along the standard wiring harness into the footwell on the drivers side.



Route branches **A2-A5** to the socket casing **X13812** from M-ASK or CCC.

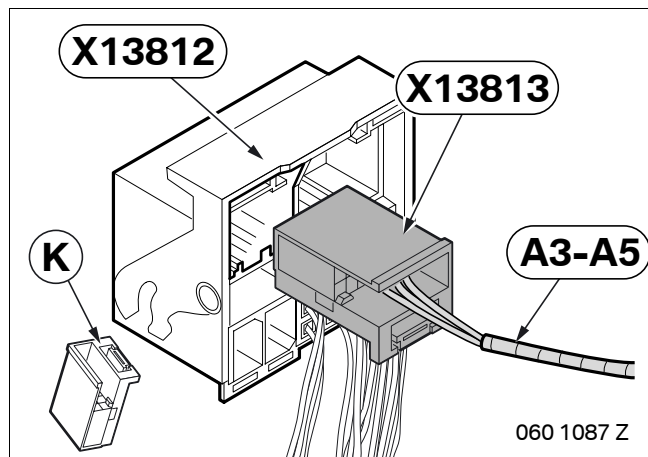
Cars with AUX jack only

Disconnect AUX cable (1) from socket casing **X13813** (black 12-pin) and connect to socket casing **E** (black 3-pin) with following pin assignments:

- White/red or black cable from PIN 2, to PIN 1
- White/brown or transparent cable from PIN 8, to PIN 3
- White/green or white cable from PIN 7, to PIN 2

Connect socket casing **E** to branch **A2** (black 3-pin plug casing).

9. Routing and connecting retrofit cable ACM



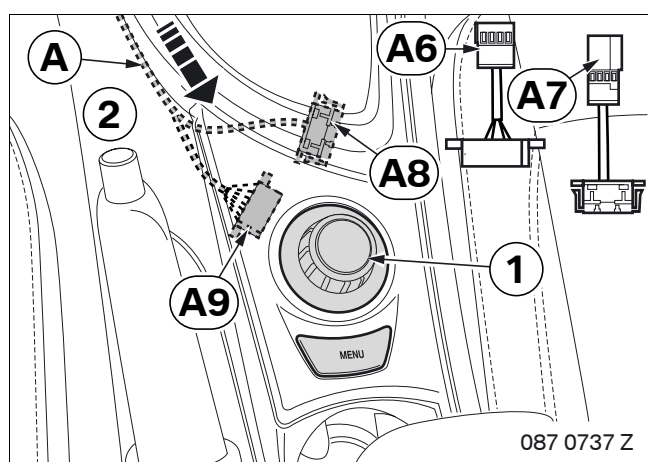
All cars

☐ If no socket casing **X13813** (black 12-pin) is available, connect branches **A3-A5** in the same way to socket casing **K**. ◀

Connect branches **A3-A5** to socket casing **X13813** as follows:

- Branch **A3**, black cable, to PIN 2
- Branch **A4**, yellow cable, to PIN 7
- Branch **A5**, white cable, to PIN 8

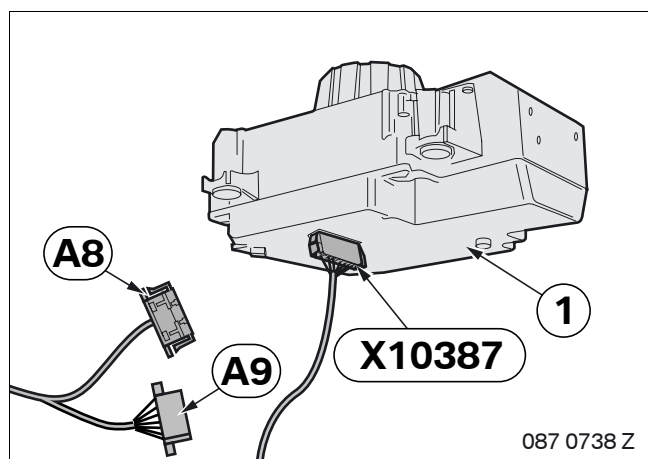
Lock socket casing **X13813** shut and insert into socket casing **X13812**.



☐ Retrofit cable ACM **A** cannot chafe on the gear lever or selector lever. ◀

Disconnect branches **A6** and **A7** from branches **A8** and **A9** (not required).

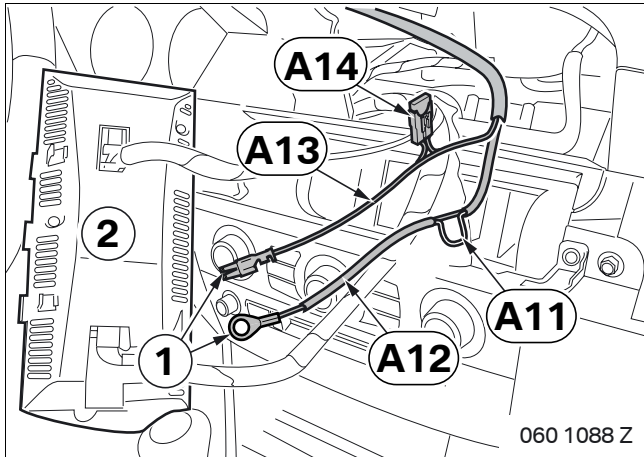
Route branches **A8** and **A9** under the centre console (2) along the standard wiring harness to the controller (1).



Disconnect socket casing **X10387** (black 8-pin) from controller (1) and connect to branch **A9** (black 8-pin plug casing).

Connect branch **A8** (black 8-pin socket casing) to controller (1).

10. Connecting the power supply and connection cable



Route branches **A11-A14** to the control display (2).

Tie back fuse holder **A14** to ACM retrofit cable.

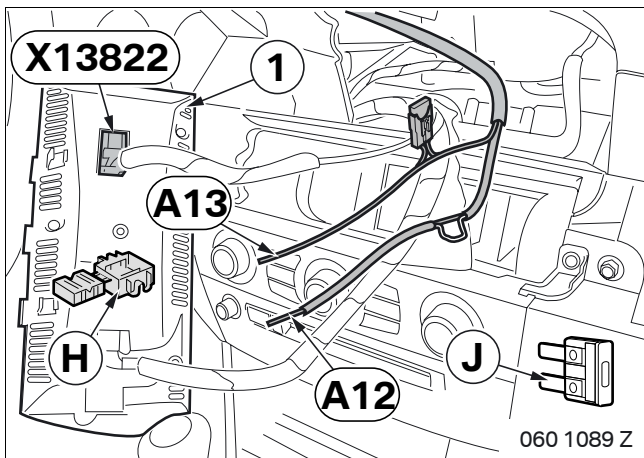
Detach contacts (1) from branches **A12** and **A13**.

Cars with M-ASK only

Cut cable loop **A11**, insulate and tie back to ACM retrofit cable.

Cars with CCC only

Tie back cable loop **A11** to ACM retrofit cable.

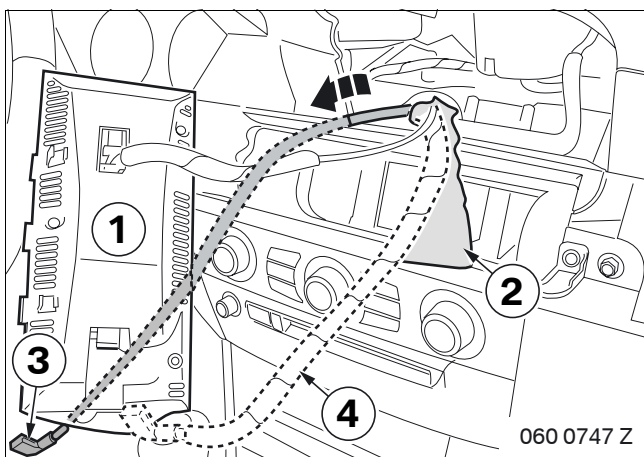


All cars

Connect branches **A12** and **A13** as follows to socket casing **X13822** (black 12-pin) on the control display (1) using miniature connectors **H**:

- Branch **A12**, brown cable, to brown/black cable from PIN 3
- Branch **A13**, red cable, to red/violet cable from PIN 1

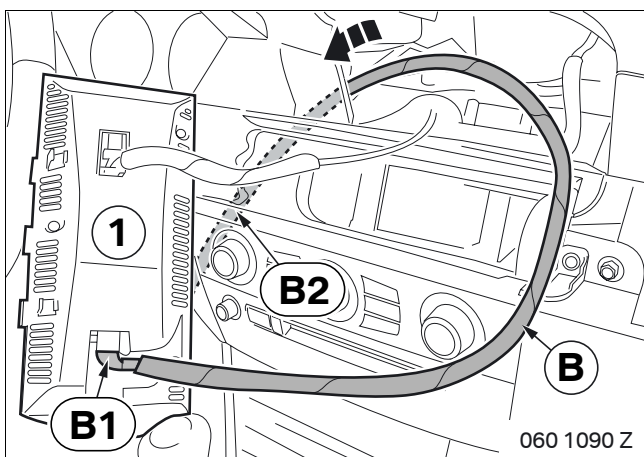
▶ If a fusible element of less than 7.5 A is present in slot 79 of the fuse holder, fusible element **J** must be used. ◀



Disconnect the existing signal cable (4) from the control display (1).

Remove the sheath (2) from the existing signal cable (4) as far as possible.

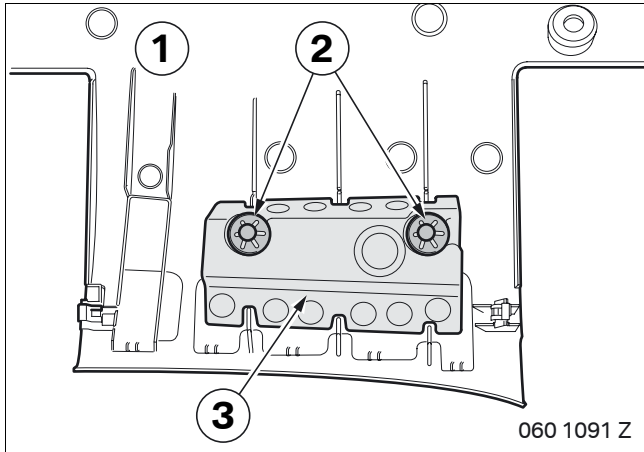
Route the socket casing (3) on the existing signal cable (4) into the footwell on the driver's side



Connect branch **B1** (violet 10-pin socket casing) of connection cable **B** on the control display (1).

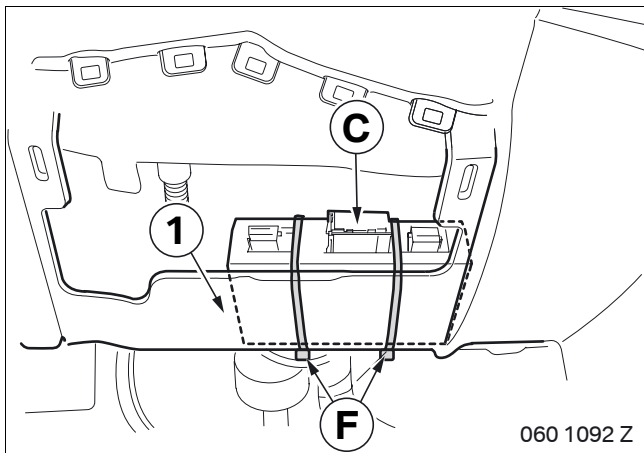
Route branch **B2** (white 10-pin socket casing) to the footwell on the driver's side.

11. Fitting ACM Unit and Universal CAN Interface



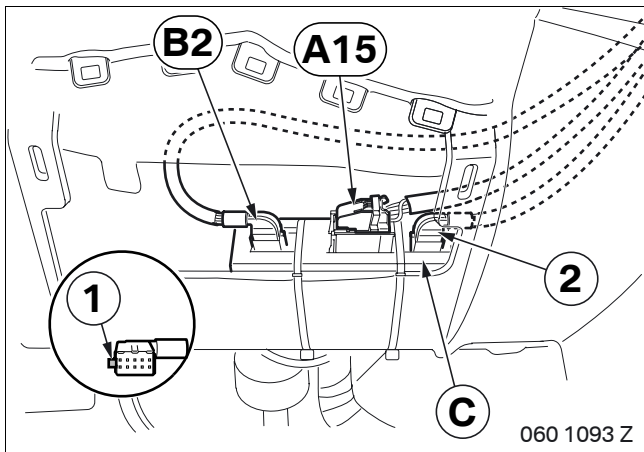
Prepare the pedal trim (1) as follows:

- Remove the lock washers (2)
- Remove the polystyrene (3)



▶ Ensure that the steering column can still move freely as required. ◀

Secure the ACM unit **C** to the trim (1) below the steering column using cable ties **F**.

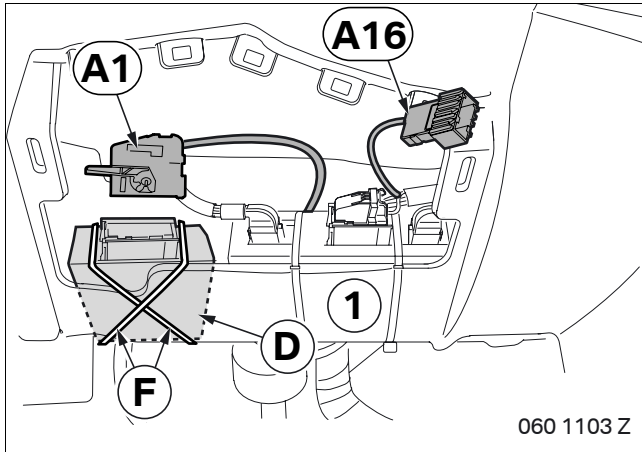


▶ Use the coding (1) on the plugs to connect them correctly. ◀

Connect plug to ACM Unit **C** as follows:

- Socket housing (2) of the existing signal cable (violet 10-pin)
- Branch **A15** (black 26-pin socket casing)
- Branch **B2** (white 10-pin socket casing)


11. Fitting ACM Unit and Universal CAN Interface



For cars built after 03/07 without SA866 (Chinese language version) SA867 (Korean language version) or LA807 (Japanese national version)

On branch **A1** (black 32-pin socket casing) disconnect grey cable from **PIN 1**, insulate and tie back.

All cars

 In countries in which the picture playback is permitted up to a certain speed, the red cable from PIN 2 to branch **A1** must be disconnected, insulated and tied back.

Ensure that the steering column can still move freely as required. ◀

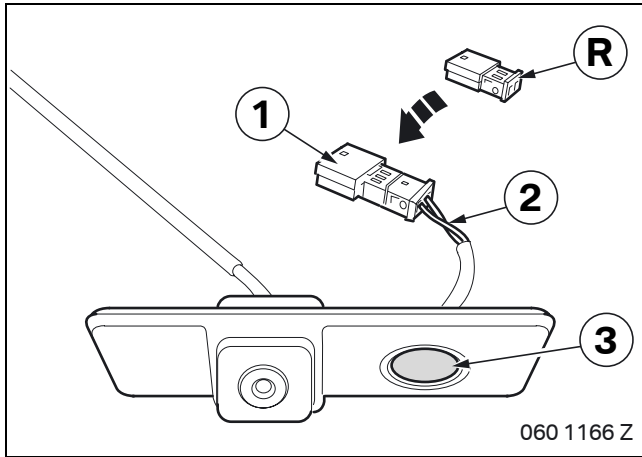
Secure the Universal CAN Interface **D** to the trim (1) below the steering column using cable ties **F**.

Connect branch **A1** to the Universal Can Interface **D**.

Hold branch **A16** (black 18-pin plug casing) at the ready for further connection.

Tie back any excess cable to the vehicle wiring harness.

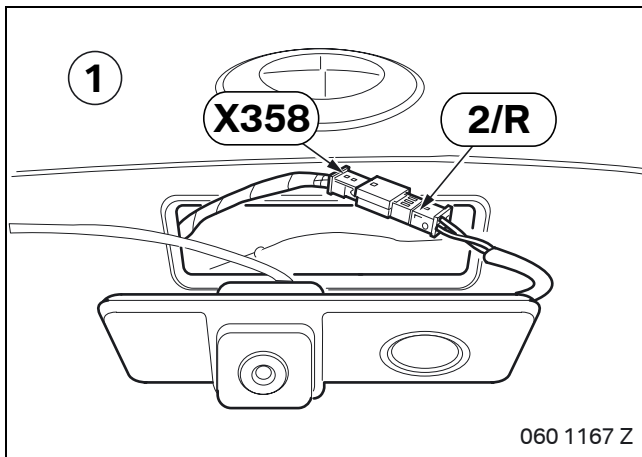
12. Installing the Rear View with button and control unit



Cars built after 09/05 only

Plug casing **R** (green 2-pin) is attached to the connection cable of the button (3). ◀

Disconnect the cable (2) of the button (3) from the existing plug casing (1) and connect to plug casing **R**.

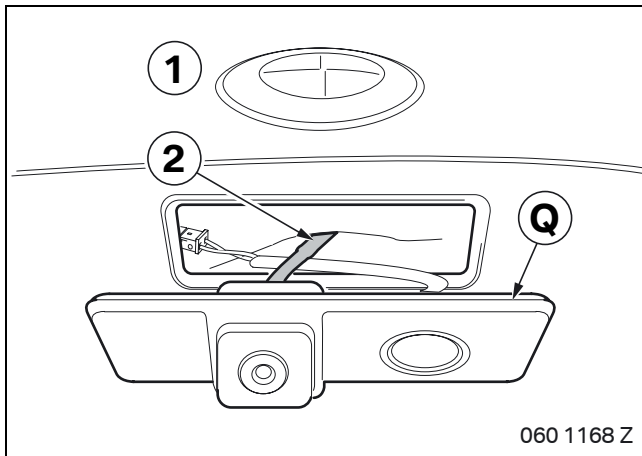


Cars built before 09/05 only

Connect plug casing (2) of the button to socket casing **X358** (3-pin Bordeaux) of the boot lid (1).

Cars built after 09/05 only

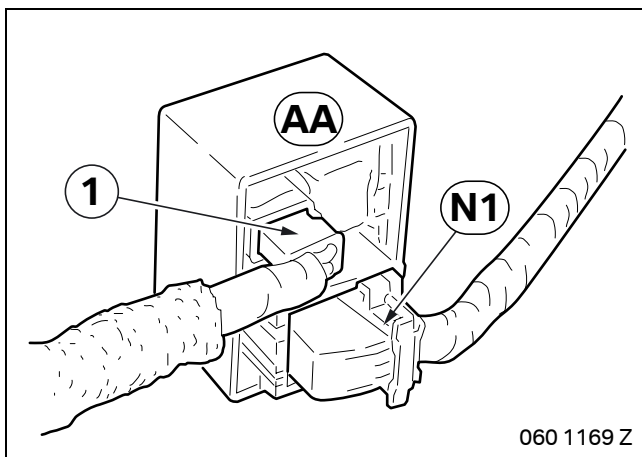
Connect plug casing **R** on socket casing **X358** (black 2-pin) of the boot lid (1).



All cars

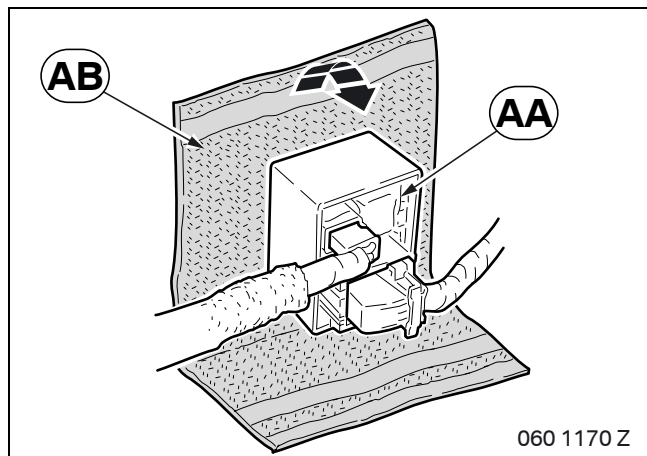
Route the connection plug (2) of the rear view into the boot lid (1).

Clip rear view with button **Q** into the boot lid (1).

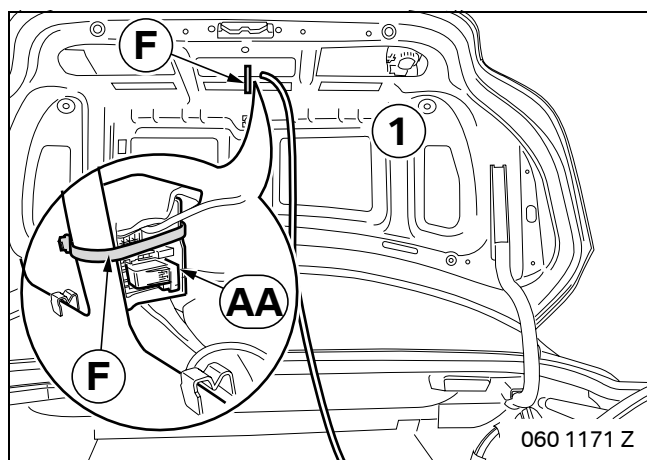


Connect the connection plug (1) of the rear view and branch **N1** (black 12-pin socket casing) to control unit **AA**.

12. Installing the Rear View with button and control unit

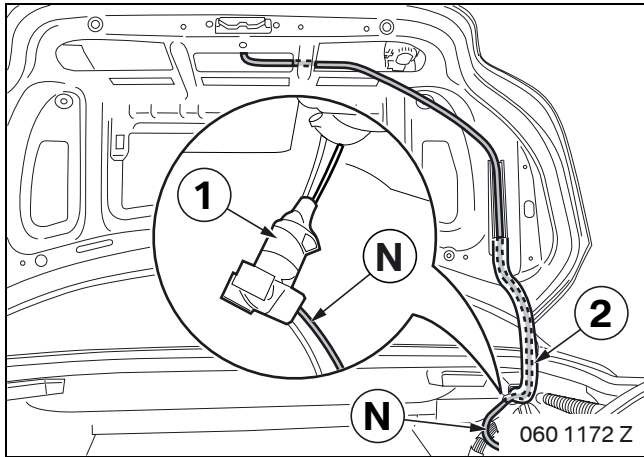


Wrap the control module **AA** in protective strips **AB**.
Cut off any excess lengths.



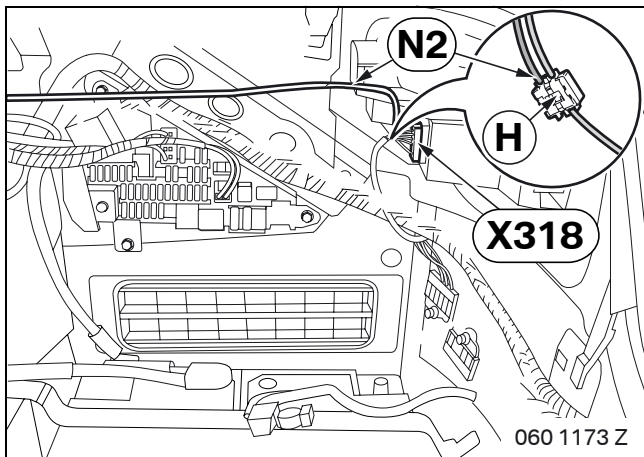
Use cable tie **E** to attach control unit **C** to the web of the boot-lid (1).

13. Routing and connecting the Rear View wiring harness



Route rear view wiring harness **N** through the hinge tube (2) and cable grommet (1) into the luggage compartment.

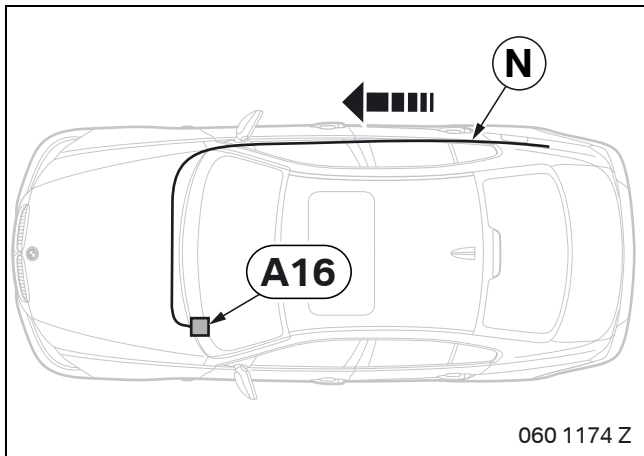
▶ Ensure that rear view wiring harness **N** has sufficient freedom of movement around the hinge. ◀



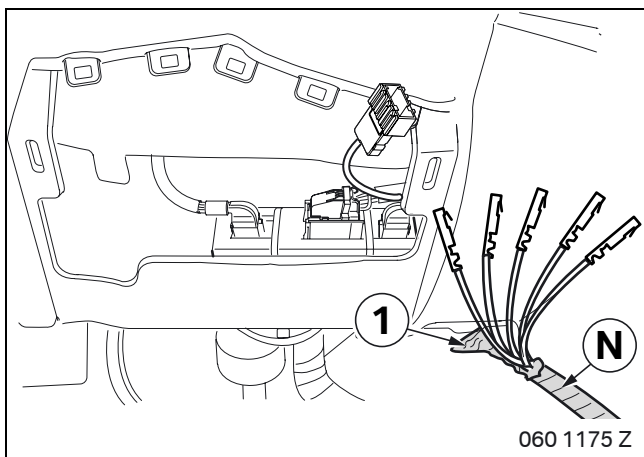
Route branch **N2**, green cable, to the right tail light.

▶ Before connecting, check whether the reversing light signal is present on the yellow/white cable. ◀

Use miniature connector **H** to connect branch **N2** to the yellow/white cable from socket casing **X318** (PIN 3).

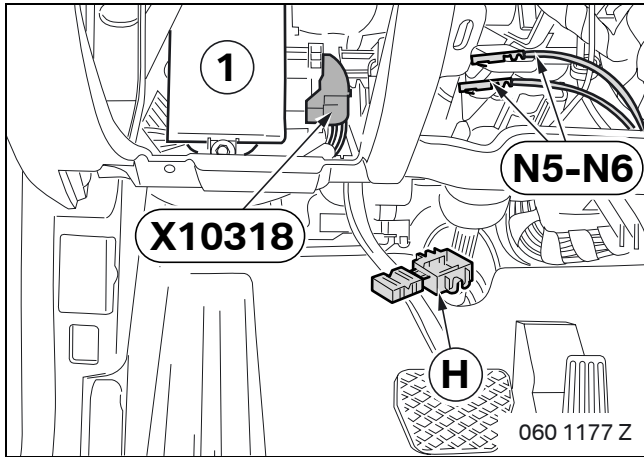


Route rear view wiring harness **N** along the standard wiring harness to branch **A16** (black 18-pin socket casing) from retrofit cable ACM.



Remove the sheath (1) from the rear view wiring harness **N** over a length of approx. 50 cm.

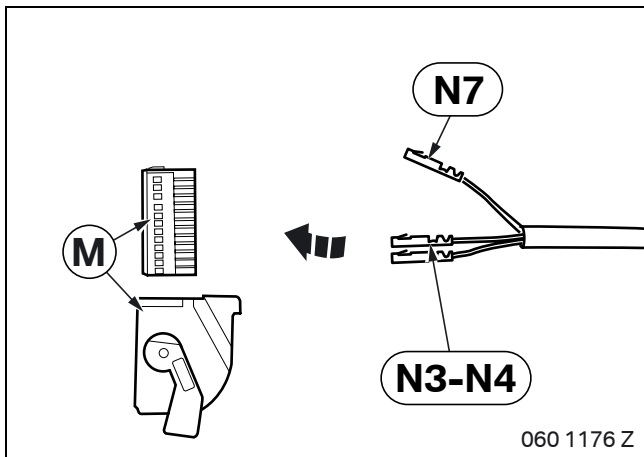
13. Routing and connecting the Rear View wiring harness



Route branches **N5** and **N6** to the CAS control unit (1) and detach contacts.

Use a miniature connector **H** to connect branches **N5** and **N6** to socket casing **X10318** (black 41-pin) as follows:

- Branch **N5**, red cable, to red/blue cable from PIN 1
- Branch **N6**, brown cable, to brown or brown/violet cable from PIN 25

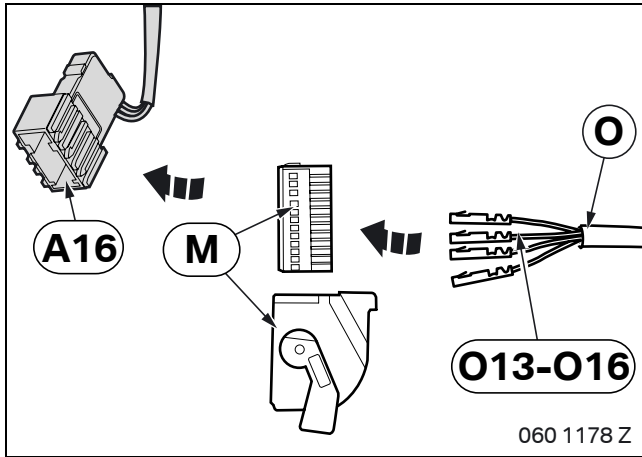


Connect branches **N3** and **N4** to socket casing **M** (black 18-pin) as follows:

- Branch **N3**, transparent cable, to PIN 17
- Branch **N4**, brown/black cable, to PIN 8

Insulate branch **N7**, green cable, and tie it back.

14. Routing and connecting the side view wiring harness



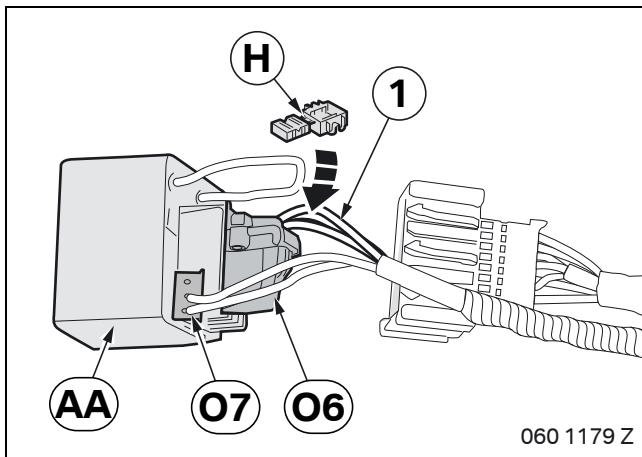
Connect side view wiring harness **O** to socket casing **M** (black 18-pin) as follows:


- Branch **O13**, black cable, to PIN 7
- Branch **O14**, white cable, to PIN 16

Insulate and tie back the following branches:

- Branch **O15**, red/yellow cable
- Branch **O16**, red/green cable

Connect socket casing **M** to branch **A16** (black 18-pin plug casing) from retrofit cable ACM.

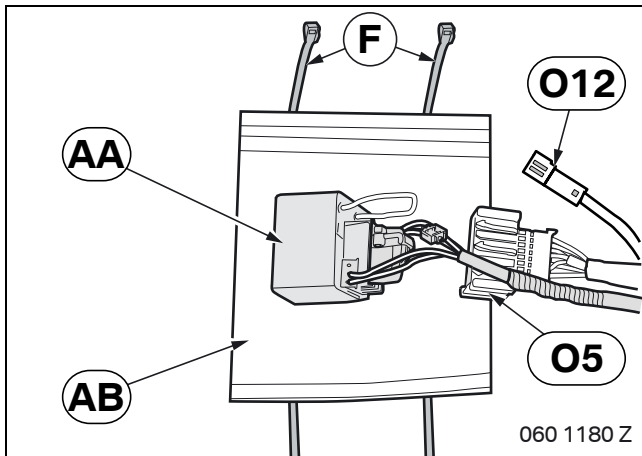


 The cables to be connected using miniature connector **H** (1) are not disconnected. ◀

Connect the following cables (1) from branch **O6** (black 12-pin socket casing) using miniature connector **H**:

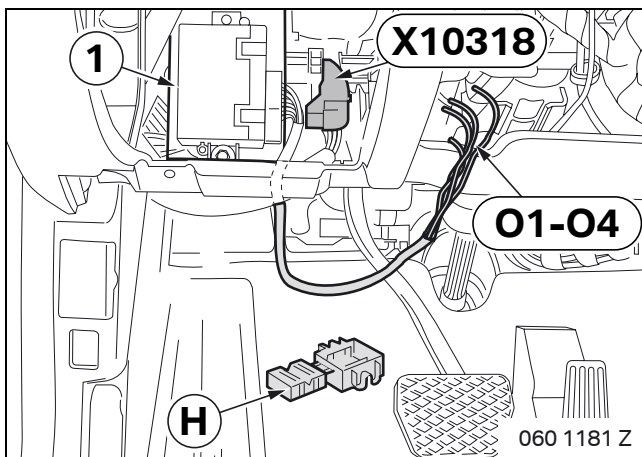
- Red/white cable (PIN 2) with red/yellow cable (PIN 3)

Connect branches **O6** and **O7** (black 4-pin socket casing) to control unit **AA**.



Insulate and tie back branches **O5** (blue 18-pin plug casing) and **O12** (black 2-pin socket casing).

Wrap control module **AA** with protective strips **AB** and secure with cable ties **F**.



Insulate and tie back the following branches:

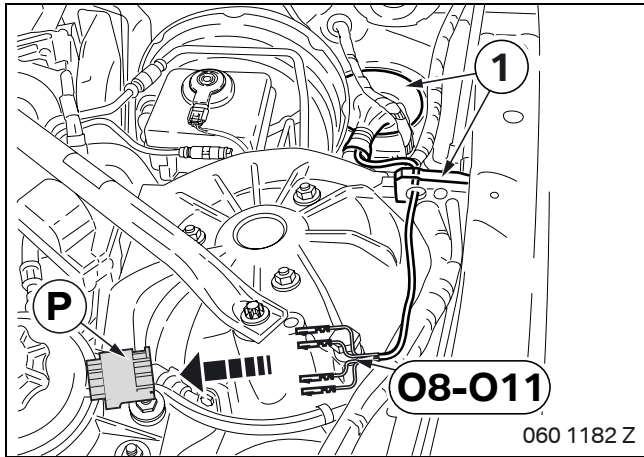
- Branch **O1**, blue/black cable
- Branch **O2**, blue/brown cable

Route branches **O3** and **O4** to the CAS control unit (1) and detach contacts.

Use a miniature connector **H** to connect branches **O3** and **O4** to socket casing **X10318** (black 41-pin) as follows:

- Branch **O3**, red/white cable, to red/blue cable from PIN 1
- Branch **O4**, brown cable, to brown or brown/violet cable from PIN 25

14. Routing and connecting the side view wiring harness

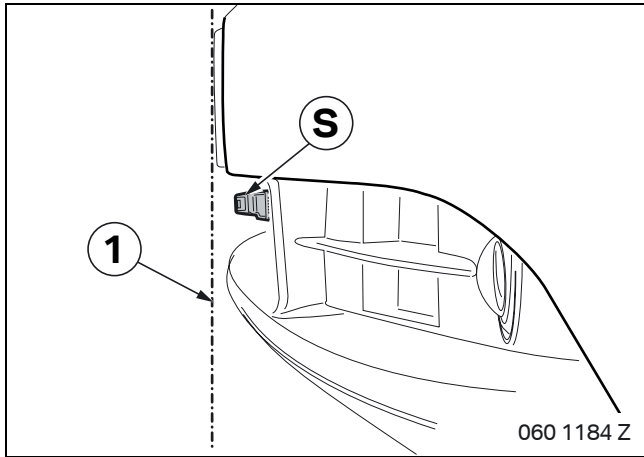


Route branches **08-011** through the grommets (1) into the engine compartment.

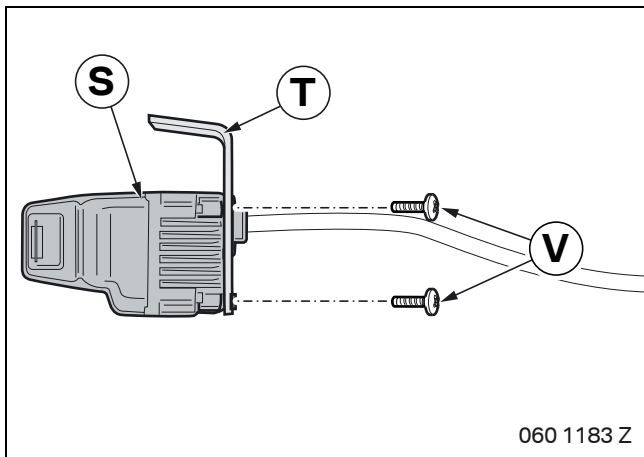
Connect branches **08-011** to socket casing **P** (black 4-pin) as follows:

- Branch **08**, black cable, to PIN 1
- Branch **09**, white cable, to PIN 2
- Branch **010**, brown cable, to PIN 3
- Branch **011**, red cable, to PIN 4

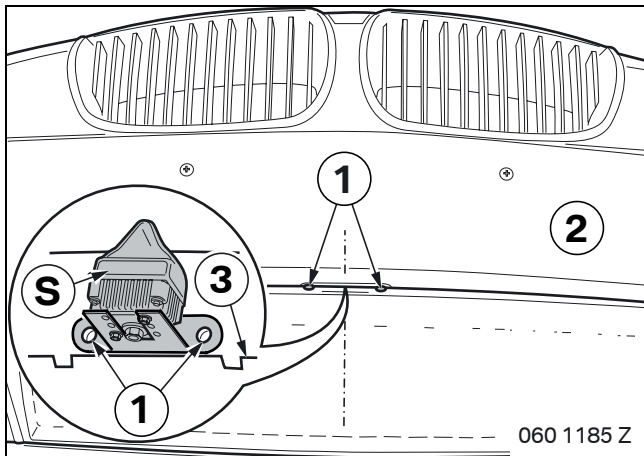
15. Installing and connecting Side View



! Side View **P** must not project beyond the outline of the car (1), otherwise the homologation for the car will be invalid. **!**



Secure side view **S** with Philips screws **V** to holder **T**.

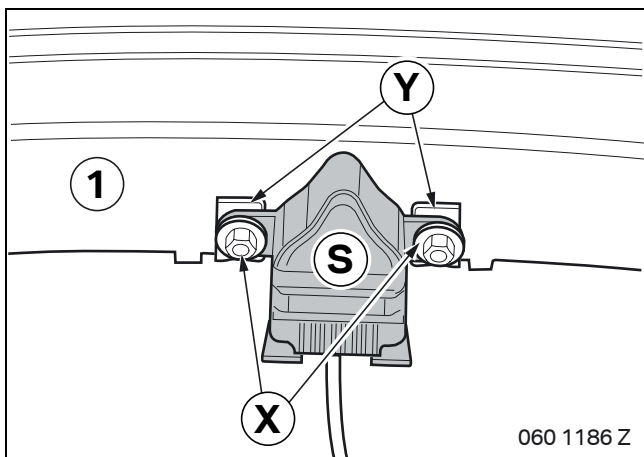


Position side view **S** on the bumper trim (2) as follows:

- In the centre on the underside
- Flush with the edge (3)

Mark the positions of the holes (1).

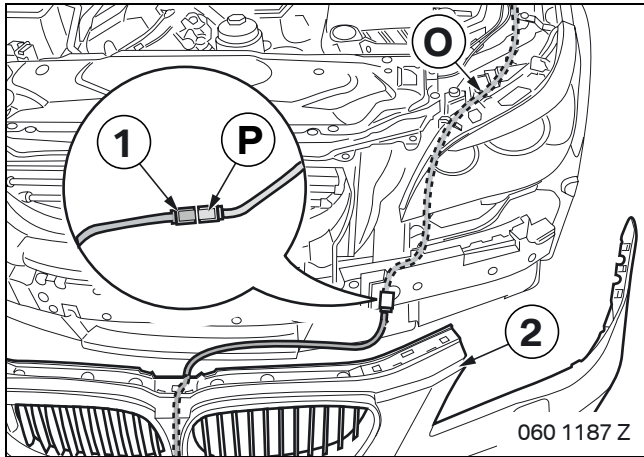
Drill through the bumper trim (2) using a 5.5 mm twist drill bit.




Place speed nuts **Y** on the bumper trim (1).

Secure side view **S** to bumper trim (1) using hexagonal screws **X**.

15. Installing and connecting Side View



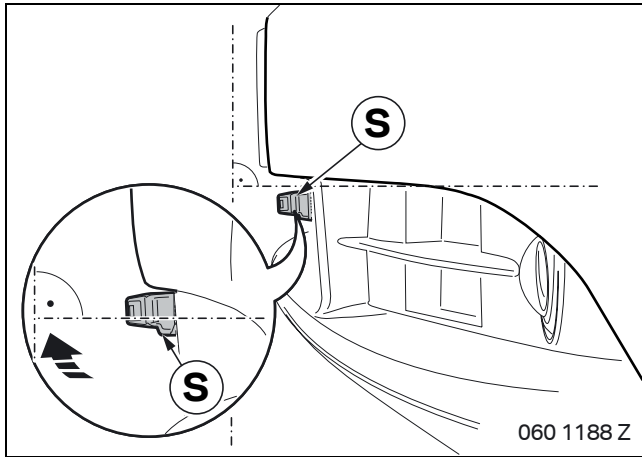
 To prevent picture problems, do not connect and secure socket casing **P** (black 4-pin) in the immediate vicinity of the headlight. ◀

Route the camera cable behind the left headlight.

Connect socket casing (1) on the camera cable to socket casing **P** from the side view wiring harness **O**.

Fit the bumper trim (2).

16. Concluding work and coding



Align the side view **S** horizontally to the car's axis by carefully bending the holder.

Cars without AUX socket only

This retrofit system requires coding.

- Connect the battery
- Conduct a brief test
- Encode/Program the retrofit with SSS (Software Service Station) via the **CIP, AUX IN connection retrofit** path

Cars with AUX jack only

This retrofit system does not require coding.

- Connect the battery
- Conduct a brief test

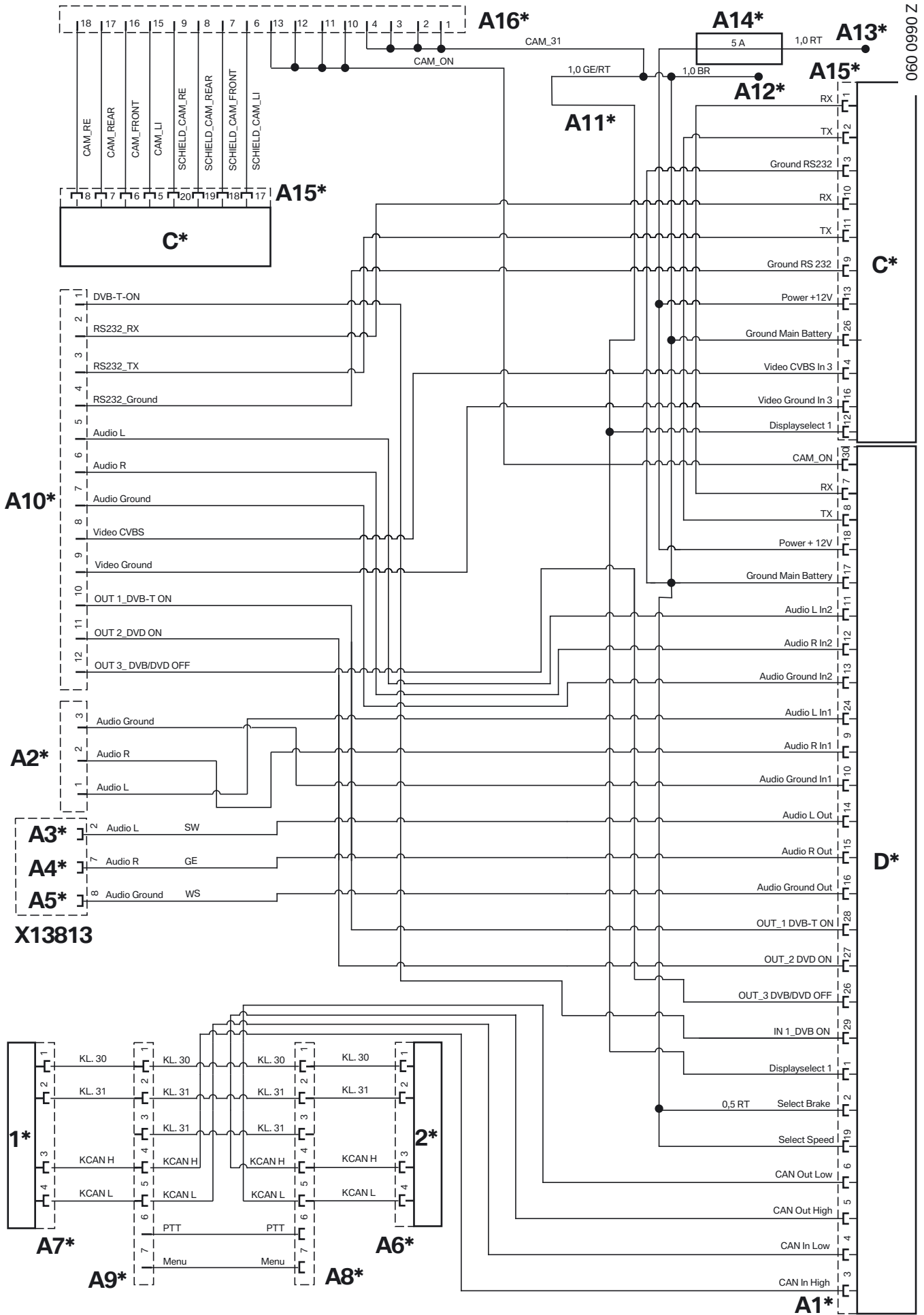
All cars

In most cases, after installation of the retrofit, repairs or a software update of the car, an image misalignment appears on the on-board monitor. In order to correct the picture offset the ACM Unit C must be initialized.


The initialization must be performed in accordance with the separate initialization instructions 01 29 0 432 055.

- Conduct a function test
- Re-fit the car components as required

17. Retrofit cable ACM circuit diagram



17. Retrofit cable ACM circuit diagram

 For cars built after 03/07 without SA 866 (Chinese language version), SA 867 (Korean language version) or LA 807 (Japanese national version) the grey cable from PIN 1 must be removed from branch **A1**, insulated and tied back. ◀

Legend

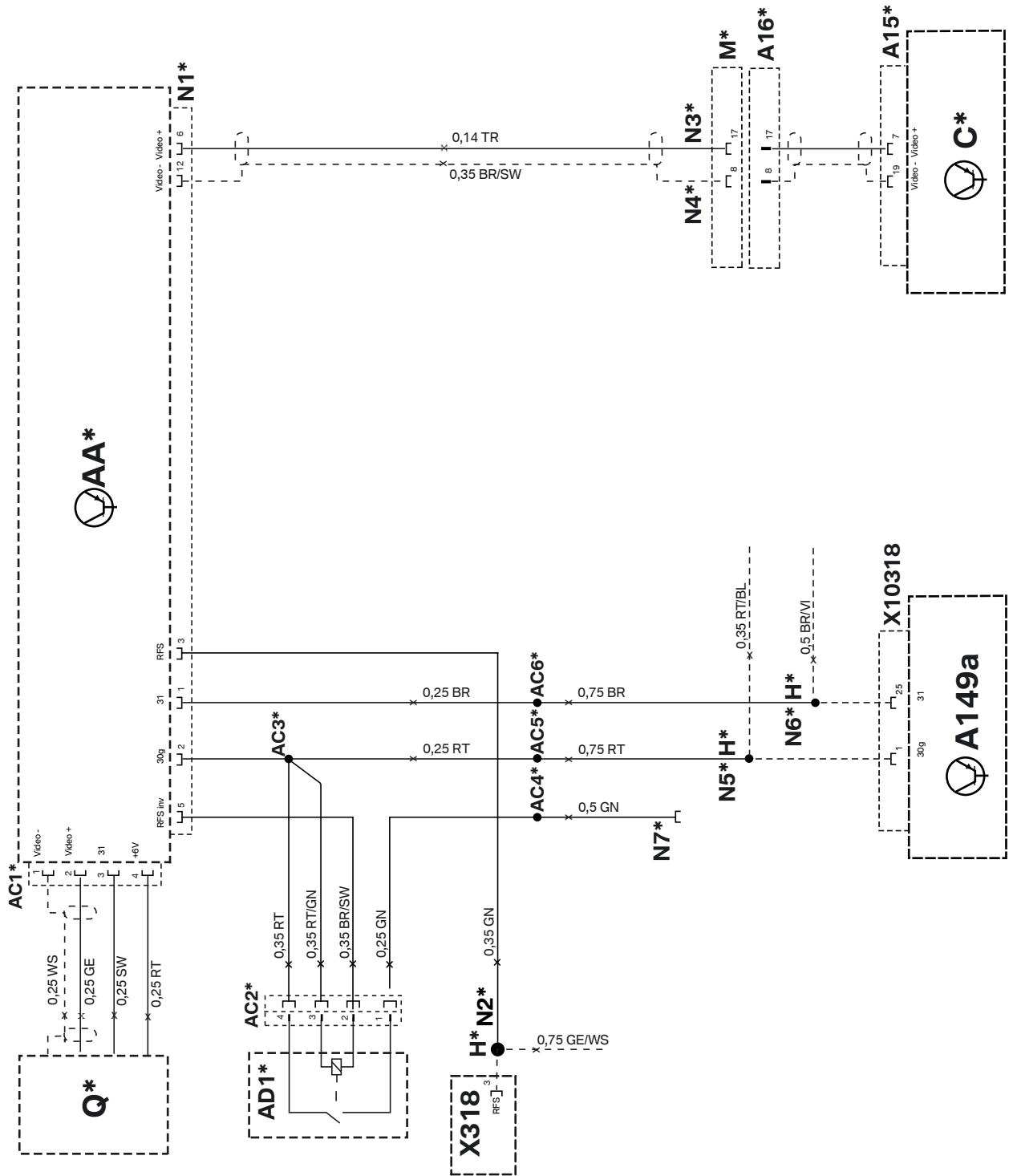
A1*	Black 32-pin socket casing
A2*	Black 3-pin plug casing
A3*	Socket contact
A4*	Socket contact
A5*	Socket contact
A6*	Black 4-pin socket casing
A7*	Black 4-pin plug casing
A8*	Black 8-pin plug
A9*	Black 8-pin plug
A10*	Black 18-pin plug casing
A11*	Cable loop
A12*	Ring eyelet, 6 mm
A13*	Socket contact
A14*	Fuse holder
A15*	Black 26-pin socket casing
A16*	Black 18-pin plug casing
C*	ACM Unit
D*	Universal CAN Interface
X13813	Black 12-pin socket casing
1*	Socket casing X10387
2*	Controller

All the designations marked with an asterisk (*) apply only to these installation instructions or this circuit diagram.

Cable colours

BL	Blue	SW	Black
BR	Brown	VI	Violet
GE	Yellow	WS	White
GN	Green	TR	Transparent
RT	red		

18. Rear view wiring harness circuit diagram



18. Rear view wiring harness circuit diagram

Legend

A15*	Black 26-pin socket casing to retrofit cable ACM A
A16*	White 18-pin plug casing to retrofit cable ACM A
A149a	CAS control module
C*	ACM Unit, to retrofit cable ACM A
H*	Miniature connector
M*	Black 18-pin socket casing
N1*	Black 12-pin socket casing
N2*	Open cable, RFS terminal pick-up
N3*	Socket contact
N4*	Socket contact
N5*	Socket contact, terminal 30g tap
N6*	Socket contact, terminal 31 tap
N7*	Socket contact, insulate and tie back
Q*	Rear View
X318	Black 6-pin socket casing, terminal RFS tap
X10318	Black 41-pin plug, terminal 30g and terminal 31 tap
AA*	Control module
AC1*	Black 4-pin socket casing
AC2*	White 4-pin miniature relay plug connector
AC3*	Terminal 30 connector
AC4*	Terminal RFSg connector
AC5*	Terminal 30g connector
AC6*	Terminal 31 connector
AD1*	Miniature relay

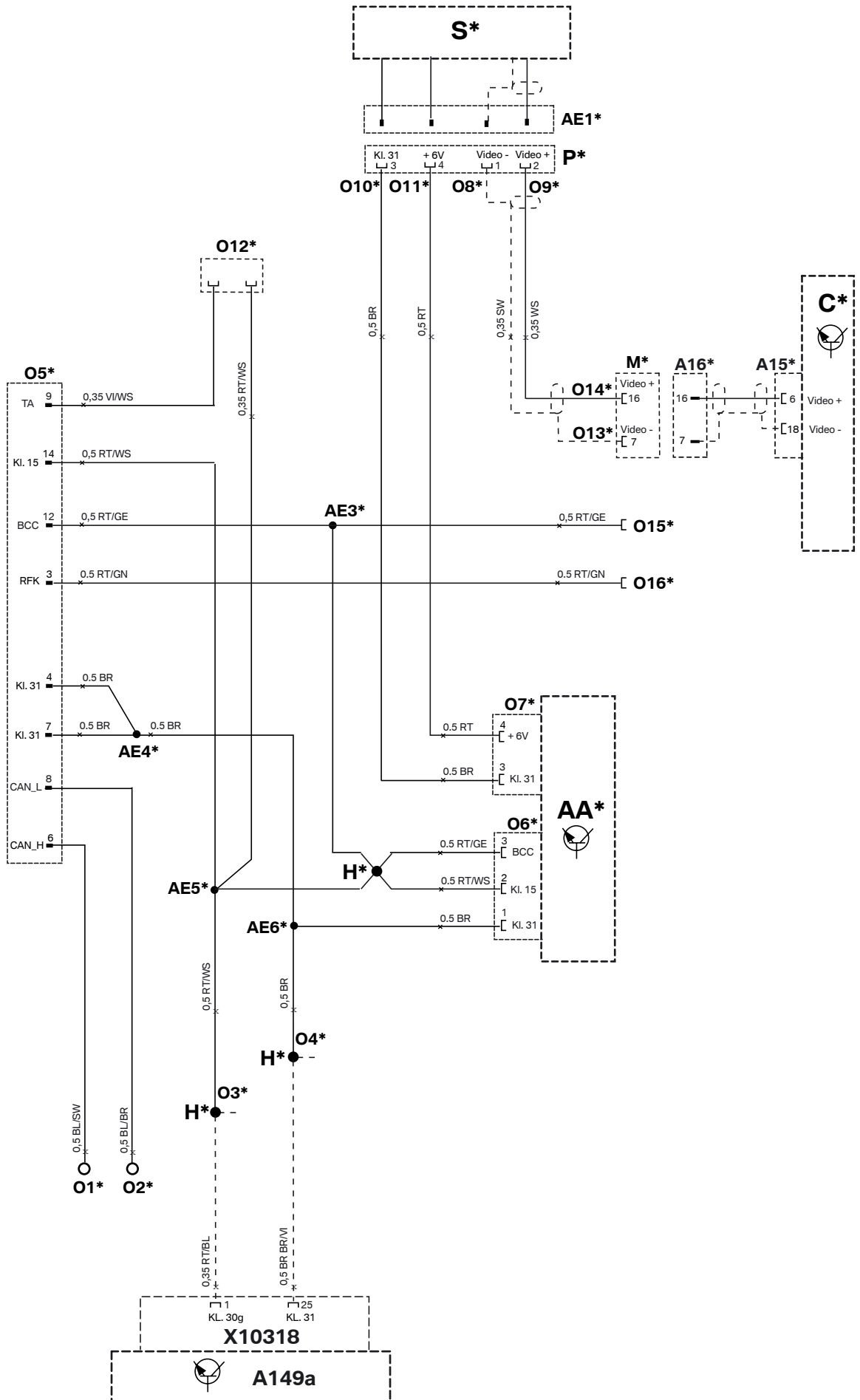
All the designations marked with an asterisk (*) apply only to these installation instructions or this circuit diagram.

Cable colours

BL	Blue	SW	Black
BR	Brown	VI	Violet
GE	Yellow	WS	White
GN	Green	TR	Transparent
RT	red		

19. Side view wiring harness circuit diagram

060 1190 Z



19. Side view wiring harness circuit diagram

Legend

A15*	Black 26-pin socket casing to retrofit cable ACM A
A16*	Black 18-pin socket casing to retrofit cable ACM A
A149a	CAS control module
C*	ACM Unit, to retrofit cable ACM A
H*	Miniature connector
M*	Black 18-pin socket casing
O1*	Open cable, insulate and tie back
O2*	Open cable, insulate and tie back
O3*	Open cable, tap terminal 30g
O4*	Open cable, terminal 31 tap
O5*	Blue 18-pin plug casing
O6*	Black 12-pin socket casing
O7*	Black 4-pin socket casing
O8*	Socket contact
O9*	Socket contact
O10*	Socket contact
O11*	Socket contact
O12*	Insulate and tie back
O13*	Socket contact
O14*	Socket contact
O15*	Socket contact, insulate and tie back
O16*	Socket contact, insulate and tie back
P*	Black 4-pin socket casing
S*	Side View
X10318	Black 41-pin plug, terminal 30g and terminal 31 tap
AA*	Control module
AE1*	Black 4-pin plug casing
AE3*	BCC connector
AE4*	Terminal 31 connector
AE5*	Terminal 30g connector
AE6*	Terminal 31 connector

All the designations marked with an asterisk (*) apply only to these installation instructions or this circuit diagram.

19. Side view wiring harness circuit diagram

Cable colours

BL	Blue
BR	Brown
GE	Yellow
GN	Green
RT	red
SW	Black
VI	Violet
WS	White