

Professional Navigation instructions.

If your iDrive screen does not look like this then you have an older software level that can only be upgraded by your dealer. In that case some steps below may be slightly different or not possible at all.

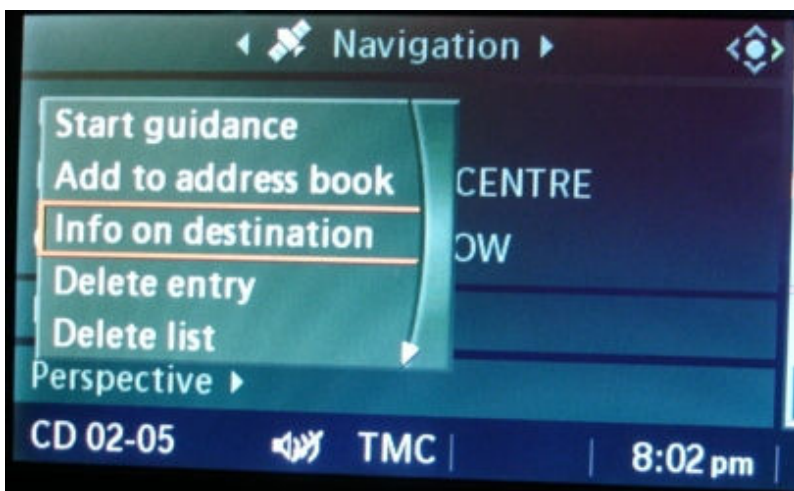


Car with CIP or PROGMAN >= v25.0.

Displaying Speed Cameras

Method 1.

- 1 Select Navigation from the iDrive menu.
- 2 Select any location in the List of Destinations
- 3 Click the iDrive to display Information on that Destination.

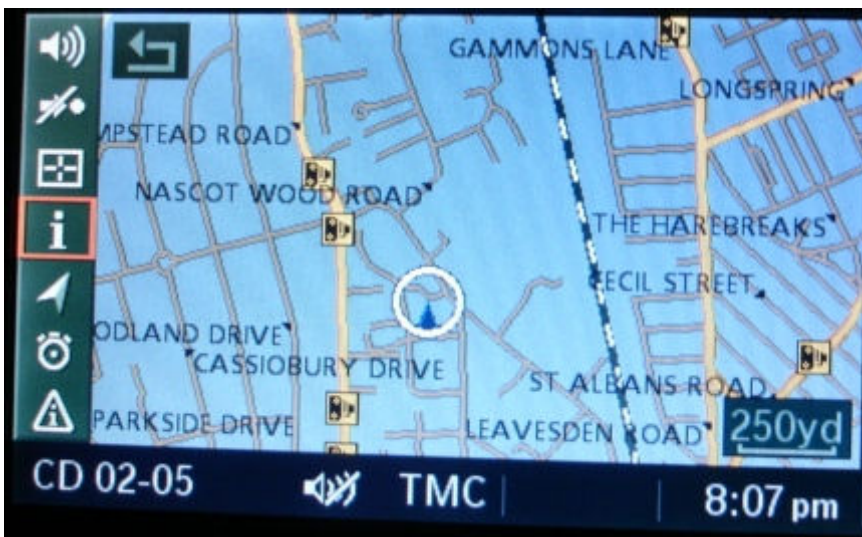
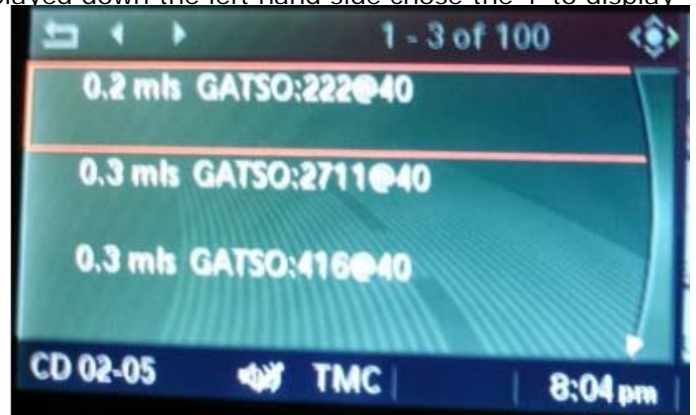


4. Locate the UK or EU Speed cameras entries under the Travel or Custom menu.



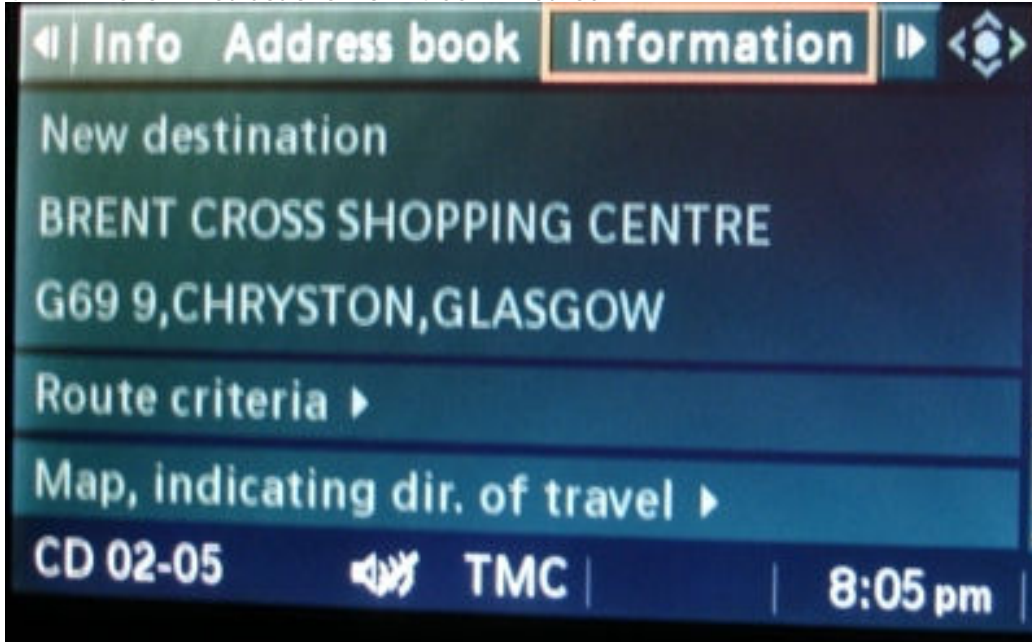
1 Click Start search if required by using an appropriate Max Distance setting. Don't add any Name. A list of all the speed cameras will be displayed and speed camera icons will appear on the map.

2 Go back to map screen and using the icons displayed down the left hand side chose the 'i' to display



Method 2 (Easier but only possible from CIP 24 onwards)

- 1 Select Navigation from the iDrive menu
- 2 Select Information menu from the Top menu bar.
- 3 Choose the "On Location" option
- 4 Follow instructions from 4 as in Method 1.



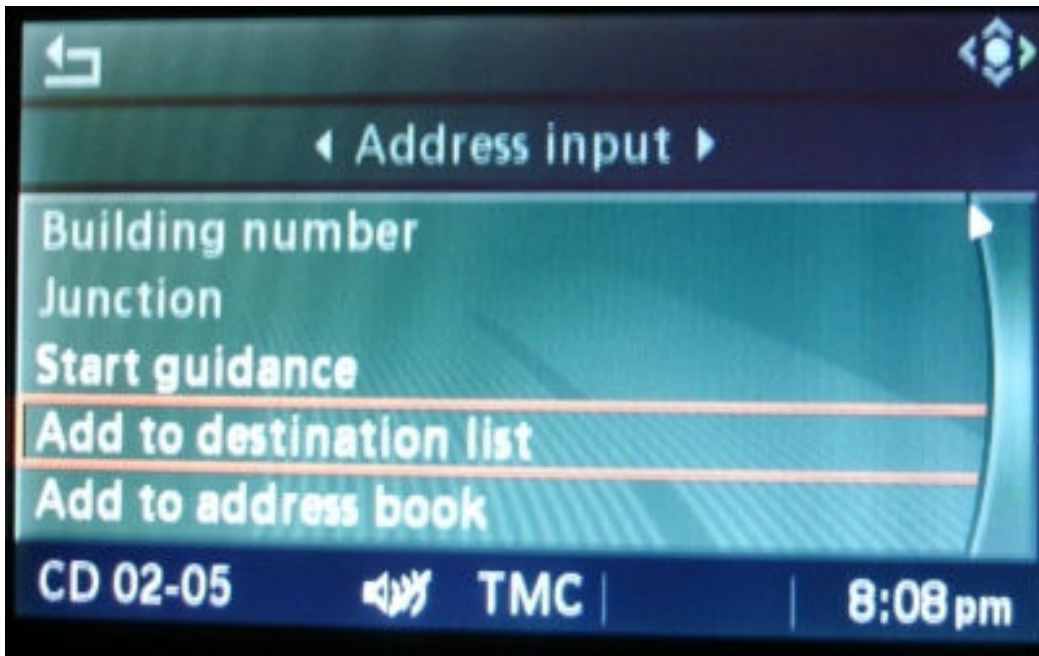
Finding a full UK postcode

Method 1.

- 1 Select Navigation from the iDrive menu.
- 2 Postcodes are entered in the City field as normal.
- 3 Enter as much of the postcode as the system will allow.



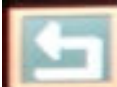
4. Next instead of choosing to "Start Guidance" choose the "Add to Destination List" option.



5. Return back to the main Navigation screen.

6. Choose the entered address from the Destination list.

7. Click the iDrive to display Information on that Destination.



◀ Address input ▶

WD17 4,WATFORD

Street

Building number

Junction

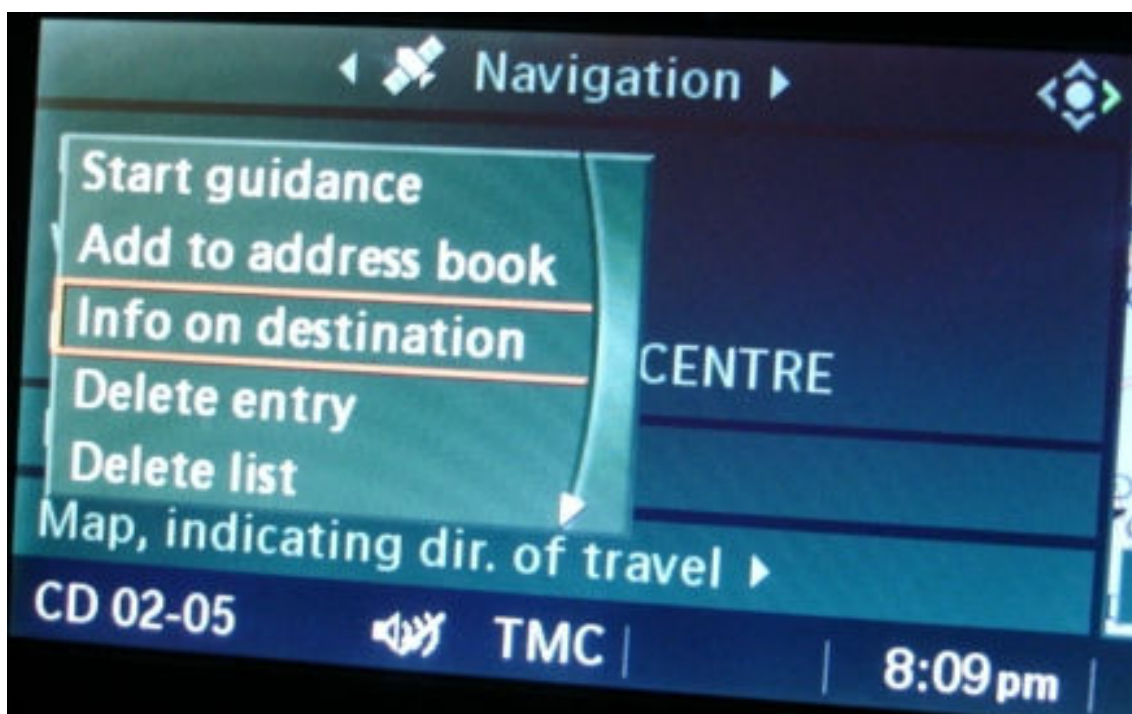
Start guidance

CD 02-05



TMC

8:09 pm



8. Locate the UK Postcode entry under the Travel or Custom menu.



9. Choose the subcategory with the first letter of the postcode. Click Start search if required by using an appropriate Max Distance setting. Don't add any Name. A list of all the postcodes will appear.



10. Select the postcode required from the list and Choose to "Start Guidance".

Note : The problem with the BMW iDrive system is the Information list has a limit to the amount of data it allows you to scroll through. So if there are many postcodes listed within the area then the postcode you want may be at the bottom on the list and beyond what iDrive will allow you to scroll to.



Method 2 (Easier but only possible from CIP 25 onwards)

1. Select Navigation from the iDrive menu.
2. Select Information menu from the Top menu bar.

3. Choose the "On Location" option

4. Locate the UK Postcode entry under the Travel or Custom menu. Choose the subcategory with the first letter of the postcode. As in Step 8 and Step 9 of Method 1 above.

5. Enter the name of the postcode (with the space too) in the "Name" field. Partial postcodes can also be entered.

6. Click "Start Search" and a list with one or many entries will appear.

7. Select the postcode required from the list and Choose to "Start Guidance".

