

series 38

super durable powder coatings



EUROPE

AUSTRIA

TIGER Coatings GmbH & Co. KG
A-4600 Wels
phone +43 / (0)7242 / 400-0
fax +43 / (0)7242 / 650 08
office@tiger-coatings.com
www.tiger-coatings.com

BELGIUM

Mr. Eric Kun
B-3680 Maaseik
phone +32 / (0)497 / 41 57 97
fax +32 / (0)89 / 56 78 58
office.be@tiger-coatings.com

C&E Warehousing

B-3640 Kinrooi
phone +32 / (0)497 / 92 25 70
fax +32 / (0)89 / 56 78 58

BOSNIA & HERZEGOVINA

Klio d.o.o.
BiH-75300 Lukavac
phone +387 / 35 / 555 392
fax +387 / 35 / 553 256
office.bih@klio.hr

Klio 1
BiH-71210 Iliđža, Sarajevo
phone +387 / 33 / 626 621

BULGARIA

Deyacolor LTD
BG-1113 Sofia 13 post box no. 265
phone/fax +359 / 2 978 58 61
office@deyacolor.com

CROATIA

Klio d.o.o.
CRO-10360 Zagreb Sesvete
phone +385 / (0)1 / 200 90 41
fax +385 / (0)1 / 200 90 43
klio@klio.hr

CZECH REPUBLIC

TIGERLAK, s.r.o.
CZ-620 00 Brno
phone +420 / 545 429 110
fax +420 / 545 229 209
office.cz@tiger-coatings.com

DENMARK

Ms. Brigitte Pudor Gullev
DK-6200 Aabenraa
phone +45 / 73 62 13 23
mobil +45 / 21 20 45 20
fax +45 / 73 62 13 24
office.dk@tiger-coatings.com

FRANCE

TIGER S.A.R.L.
F-69480 Anse
phone +33 / (0)474 / 67 13 70
fax +33 / (0)474 / 67 10 42
office.fr@tiger-coatings.com

GERMANY

KLOZ Kunststofftechnik GmbH
D-70736 Fellbach-Oeffingen
phone +49 / (0)711 / 95 19 80 32
fax +49 / (0)711 / 518 07 50
info@kloz-kunststofftechnik.de

KLOZ Wickede
D-58739 Wickede-Ruhr
phone +49 / (0)2377 / 36 25
fax +49 / (0)2377 / 26 22

Jochen Hänel Handelsvertretung
D-65239 Hochheim a. M.-Süd
phone +49 / (0)6146 / 83 58 81
fax +49 / (0)6146 / 83 58 84
jhaenel@gmx.de

Boris Herrmann Handelsvertretung
D-44309 Dortmund
phone +49 / (0)231 / 25 70 12
fax +49 / (0)231 / 25 70 15
b.herrmann@tiger-coatings.com

Thomas Leitzke Handelsvertretung
D-47647 Kerken
phone +49 / (0)2833 / 57 39 32
fax +49 / (0)2833 / 57 39 33
t.leitzke@tiger-coatings.com

GREAT BRITAIN

TIGER COATINGS UK LTD
Solihull, West Midlands, B93 9EG
phone +44 / (0) 1564 778 866
fax +44 / (0) 1564 778 903
office.gb@tiger-coatings.com

HUNGARY

TIGERLAKK Kft.
H-1183 Budapest
phone +36 / 1 / 293 90 20
fax +36 / 1 / 297 45 49
office.hu@tiger-coatings.com

ITALY

TIGER Drylac Italia s.r.l.
I-24121 Bergamo
phone +39 / 035 / 417 39 67
fax +39 / 035 / 22 37 11
office.it@tiger-coatings.com

LITHUANIA, LATVIA

UAB „LAKMALIT“
LT-3000 Kaunas
phone +370 / 7 / 32 37 41, 32 34 95
fax +370 / 7 / 32 40 87
kaunas@lakmalit.lt

THE NETHERLANDS

Mr. Ben de Jong
NL-2133 GJ Hoofddorp
phone +31 / (0)6 / 419 956 80
fax +31 / (0)23 / 565 58 72
office.nl@tiger-coatings.com

POLAND

Tensor Consulting
PL-04512 Warszawa
phone +48 / (0)22 / 815 42 79
fax +48 / (0)22 / 815 42 79
ajelonek@tensor.com.pl

ROMANIA

SC TIGER Coatings Romania SRL
R-010631 Bucuresti
phone +40 / (0)21 / 314 77 37
fax +40 / (0)21 / 314 77 87
office.ro@tiger-coatings.com

RUSSIA

OOO TECHNOKOLOR-M
107370 Moscow, Russia
phone +007 / 495 / 966 75 08
fax +007 / 495 / 963 47 45
sales@technocolor.ru

SERBIA

Klio NS d.o.o.
SCG-21000 Novi Sad
phone +381 / 21 / 478 01 08
fax +381 / 21 / 641 00 40
office@klio.co.yu

SLOVAKIA

TIGERLAK Slovakia spol.s r.o.
SK-902 01 Pezinok
phone +421 / (0)33 / 640 00 71
fax +421 / (0)33 / 640 00 72
office.sk@tiger-coatings.com

SLOVENIA

T-Lotus d.o.o.
SLO-9240 Ljutomer
phone +386 / (0)2 / 583 18 79
fax +386 / (0)2 / 583 18 80
kontakt@t-lotus.si

SPAIN

TIGER Coatings GmbH & Co. KG
12001 Castellón - SPAIN
phone +34 / (0)664 / 328 449
fax +34 / (0)964 / 050 309
office.es@tiger-coatings.com

SWITZERLAND

FEYCO AG
CH-9430 St. Margrethen SG
phone +41 / (0)71 / 747 84 11
fax +41 / (0)71 / 747 85 10
info@feyco.ch

TURKEY

Enki İç ve Dis Tic. Paz. Dan. San. Tic. Ltd.Sti.
No: 26 Dk: 1Kadiköy-Istanbul
phone +90 / (0)216 / 467 38 57
fax +90 / (0)216 / 467 39 13
b.gurkan@tiger-coatings.com

UKRAINE

Interfarb - Ukraina
UA-79012 Lvov
phone/fax +380 / 322 / 40 23 11
phone/fax +380 / 322 / 97 10 76
interfarb@utel.net.ua

THE AMERICAS

ARGENTINA

Glass + Partner S.A.
AR-1429 Buenos Aires
phone +54 / 114 / 541 70 58
fax +54 / 114 / 541 70 58
glasspartner@arnet.com.ar

BRAZIL

TIGER Drylac do Brasil Ltda.
13295-000 ITUPEVA SP
phone +55 / 11 / 44 96 53 27
fax +55 / 11 / 44 96 65 14
office.br@tiger-coatings.com

CANADA

ONTARIO: TIGER Drylac Canada Inc.
Guelph, Ontario, N1G 4P5
phone +1 / 519 / 766 47 81
fax +1 / 519 / 766 47 87
info@tigerdrylaccanada.com

QUEBEC: TIGER Drylac Canada Inc.

Anjou, Quebec H1E 1P2
phone +1 / 514 / 351 53 31
fax +1 / 514 / 351 40 15
tigerqc@microtec.net

CALGARY: TIGER Drylac Canada Inc.

Calgary, Alberta Canada T2E 6L7
phone +1 / 403 / 398 97 23
fax +1 / 403 / 398 97 25
info@tigerdrylaccanada.com

VANCOUVER: TIGER Drylac Canada Inc.

Delta, BC V3M 5P8
phone +1 / 604 / 540 97 26
fax +1 / 604 / 540 97 25
vancouver@tigerdrylaccanada.com

CHILE

TIGER Drylac de Chile Ltda.
San Ramon, Santiago de Chile
phone +56 / 2 / 511 56 59
fax +56 / 2 / 511 56 59
office.cl@tiger-coatings.com

MEXICO

TIGER Drylac MEXICO S.A. DE C.V.
Col. Santa Cruz Acatlan, Naucalpan
Edo. de Mexico C.P. 53150
phone +52 / 555 / 363 12 14
fax +52 / 555 / 363 17 39
mexico@tigerdrylac.com

U.S.A.

TIGER Drylac U.S.A., Inc. (HQ's)
Ontario, CA 91761
phone +1 / 909 / 930 91 00
fax +1 / 909 / 930 91 11
customerservicewest@tigerdrylac.com

TIGER Drylac U.S.A., Inc.
St. Charles, IL 60174
phone +1 / 630 / 513 99 99
fax +1 / 630 / 513 99 98
customerservicemw@tigerdrylac.com

TIGER Drylac U.S.A., Inc. (HQ's)
Reading, PA 19605
phone +1 / 610 / 926 81 48
fax +1 / 610 / 926 81 49
customerserviceeast@tigerdrylac.com

TIGER Drylac U.S.A., Inc.
Kennesaw, GA 30144
phone +1 / 770 / 218 24 90
fax +1 / 770 / 218 24 95
customerserviceeast@tigerdrylac.com

TIGER Drylac U.S.A., Inc.
Arlington TX 76011
phone +1 / 817 / 277 79 95
fax +1 / 817 / 277 19 31
customerservicesouth@tigerdrylac.com

MIDDLE EAST

UNITED ARAB EMIRATES

TIGER Coatings Middle East (FZE)
Sharjah
phone +971 / (0)6 / 559 06 23
fax +971 / (0)6 / 559 06 24
office.ae@tiger-coatings.com

ASIA

CHINA

TIGER Drylac (Taicang) Co. Ltd.
Taicang, Jiangsu 215400
P.R. China
phone +86 / (0)512 / 53 56 06 19
fax +86 / (0)512 / 53 95 50 95
office.cn@tiger-coatings.com

TIGER Drylac Beijing Warehouse
Shibali dian Chaoyang, Beijing
P.R. China
phone +86 / (0)10 / 87 30 44 38
fax +86 / (0)10 / 67 70 35 04

TIGER Drylac Guangzhou Warehouse
Nancun town, Panyu Guangzhou
P.R. China
phone +86 / (0)20 / 84 59 29 01
fax +86 / (0)20 / 34 57 94 97

HONG KONG

TIGER Coatings Hong Kong Limited
Kowloon, Hong Kong
phone +852 / 27 81 55 82
fax +852 / 27 82 58 86
office.hk@tiger-coatings.com

INDIA

National Corporation
Bangalore-560 002, INDIA
phone +91 / (0)80 / 222 265 54
fax +91 / (0)80 / 222 148 00
rsachdev@vsnl.com

JAPAN

TIGER Drylac JAPAN K.K.
Kanagawa, 229-1135, JAPAN
phone +81 / (0)42 / 760 60 56
fax +81 / (0)42 / 760 60 57
office.jp@tiger-coatings.com

MALAYSIA

TIGER Drylac MALAYSIA Sdn. Bhd.
50250, Kuala Lumpur
phone +60 / (0)3 / 20 39 43 15
fax +60 / (0)3 / 20 31 83 59
office.my@tiger-coatings.com

SINGAPORE

TIGER Drylac SINGAPORE Pte. Ltd.
SINGAPORE 759196
phone +65 / 67 59 94 33
fax +65 / 67 59 94 36
office.sg@tiger-coatings.com

TAIWAN

Vigorousport Int. Co., Ltd.
Taichung, TAIWAN
phone +886 / (0)4 / 23 82 21 23
fax +886 / (0)4 / 23 82 21 11
office.tw@tiger-coatings.com

THAILAND

Grand Siam Commercial Co., Ltd.
Bangkok 10320
phone +66 / 2 / 691 62 74
fax +66 / 2 / 691 22 25
apichart@samart.co.th

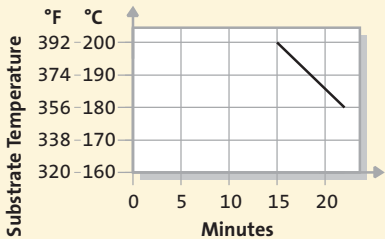
VIETNAM

TIGER Drylac Vietnam Co., Ltd.
Binh Duong Province
phone +84 / 650 / 758 370
fax +84 / 650 / 758 371
office.vn@tiger-coatings.com

TIGER Drylac Ha Noi Warehouse
Ha Noi
phone +84 / 4 / 762 81 65
fax +84 / 4 / 762 81 64

TIGER Drylac® Series 38 – Exterior or Interior

A highly weather- and UV-resistant powder coating based on super-durable TGIC Polyester

| | |
|------------------------------|---|
| Features | Superior Gloss and Color Retention Excellent Weather Resistance Good Mechanical Properties Superior Chalking Resistance Very Smooth Flow Excellent Edge Coverage Good Storage Stability |
| Typical Applications | Architectural Applications Construction Industry Lighting Fixtures Park Furniture Playground Equipment Garage Doors Stadium Seating Fencing Defense Industry Automotive Equipment Marine Applications Agricultural Equipment Sports Equipment Recreational Vehicles Lawn and Garden Equipment Railing |
| Standard Series 38 | Smooth Glossy (85±5*) RAL Colors (see RAL color and product number listing) Smooth Matte (20±5*) Smooth Matte Satin (30±5*) <small>Gloss level according to Gardner 60° ASTM D523</small> |
| Custom Colors | Any other color or finish is available as a custom color with a 220-lb. minimum order. Due to pigmentation a small percentage of colors in the yellow, orange, red and purple range offer only limited UV stability. UV stability of custom color products in that color range must be verified by our production laboratories on a case by case basis. |
| Standard Packaging | 44 lbs/20 kg and 55 lbs/25 kg carton or 5 lbs/2.5 kg Minipack |
| Specific Gravity | 1.2 – 1.6 g/cm ³ depending on pigmentation |
| Theoretical Coverage | Depending on pigmentation and processing conditions. 1 lb coats approx. 50 sq. ft. at 3 mils avg. 1 kg coats approx. 10 sq. m. at 75 microns avg. |
| Processing | Electrostatic and Tribo/Airstatic Spraying, manual or automatic. |
| Dry Storage Stability | 6 months at no more than 77° F/25° C |
| Cure Parameter |  |
| Note | A reasonable degree of loss of gloss and color variation due to long-term UV exposure can be expected. |

notes

TIGER SHIELD System

for superior corrosion protection (recommended for marine environments and coastal regions)

Product Description

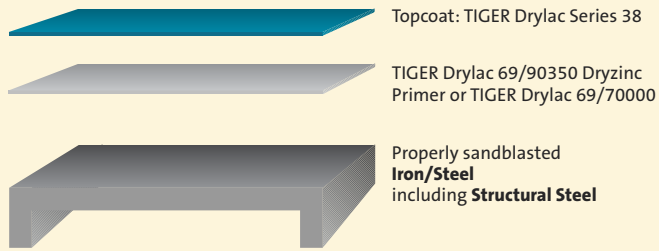
The TIGER Drylac SHIELD System is a two-coat process combining optimum corrosion protection with highest weatherability.

The basis for the excellent corrosion resistance is either TIGER Drylac 69/90350, a Dryzinc Primer or TIGER Drylac 69/70000, a Dryprotective Primer. This two coat system warrants an optimum non-porous film as well as excellent UV protection through the use of high quality polyester powder coatings.

Processing

Electrostatic and Tribo/Airstatic spraying, manual or automatic. TIGER Drylac 69/90350 Dryzinc Primer and TIGER Drylac 69/70000 Dryprotective Primer must be applied over a clean dry substrate, free of any contaminants and oxidation. Note: Time elapsed between application of TIGER Drylac 69/90350 Dryzinc Primer and topcoating with TIGER Drylac Series 38 Polyester must not exceed 12 hours max.

Steel/Iron



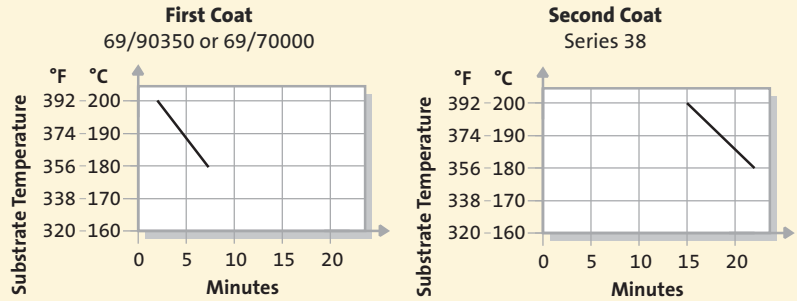
Aluminum

Under normal conditions a single coat of Series 38 powder coating is sufficient. In highly corrosive environments, as is found in coastal regions or industrial atmospheres, a 2-coat system of TIGER Drylac Dryprotector 69/70000 plus a topcoat of Series 38 can be beneficial. Both products are engineered to complement each other and offer an excellent corrosion barrier. For objects exposed to extreme conditions, especially where there is a possibility of filiform corrosion, Chromate Conversion coatings or Chrome Phosphatizing has been proven to be an excellent pretreatment choice.

Cure Parameters

TIGER Drylac Dryzinc Primer and Dryprotector Primer

In general, we recommend only partial rather than full cure for the first coat.



Specific Gravity

TIGER Drylac Series 38: 1.2–1.8 g/cm³ depending on pigmentation.

TIGER Drylac 69/90350 Dryzinc Primer: 3.0 ± 0.1g/cm³

TIGER Drylac 69/70000 Dryprotective Primer: 1.6 ± 0.1g/cm³

Theoretic Coverage

Depending on pigmentation and processing conditions and a specific gravity of 1.5. 1 lb coats approximately 51.5 square feet at 2.5 mils avg. 1 kg coats approximately 11.1 square meters at 60 microns avg.

Test Results on Aluminum:

| | | |
|--|--|--------------------------------|
| Corrosion Resistance Humidity Resistance 3000 hrs.—ASTM D 2247 | Formation of blisters not to exceed "few" blisters size #8 as shown in Figure 4.0 ASTM D 714 | No blistering |
| Salt Spray Resistance 3000 hours – ASTM B 117 | Minimum rating of 7 on scribe or cut edges, and a minimum blister rating of 8 within the test specimen field, in accordance with the Table 1 and Table 2 Reference modification of ASTM D 1654 | No blistering, no undercutting |

Test Results on Steel:

| Salt Spray Resistance* ASTM 117-90 | Undercutting | Blisters | Adhesion |
|---------------------------------------|--------------|----------|----------|
| 1000 hour | 0 | m0 / g0 | Gt0 |
| 2000 hour | 0 – 1 | m0 / g0 | Gt0 |
| 3000 hour | 2 – 3 | m2 / g1 | Gt0 |

*Tested on a 2-coat system of Series 38 and TIGER Drylac® 69/90350 Dryzinc Primer (substrate: steel—sandblasted)

Mechanical Properties:

| Test | Results for basecoat alone 69/90350 | Two-Coat System TIGER Drylac 69/90350 + TIGER Drylac Series 38 |
|--|--|---|
| Film Thickness | 2.4-2.6 mils/60±5µm | 2.4-2.6 mils/60±5µm (Primer) 2.4-2.6 mils/60±5µm (Topcoat) Minimum requirement for a non-porous film! |
| Cross Hatch Adhesion ISO 2409 / ASTM D 3359 | pass 100% | pass 100% |
| Mandrel Bending Test ISO 1519 / ASTM D 522 | 5/32 in. /4 mm (3/16 in./5 mm) | 3/8 in./10 mm |
| Impact test 1/10 in. Distortion ISO 6272 / STM D 2794-90 | up to 40 in./lbs. (up to 20 in./lbs.) | up to 40 in./lbs. (up to 20 in./lbs.) |
| Cupping ISO 1520 | 5/16 in./8 mm (3/16 in./5 mm) | 5/16 in./8 mm (3/16 in./5 mm) |

Data in "()" reflects properties valid for TIGER Drylac 69/70000 Dryprotective.

super durable

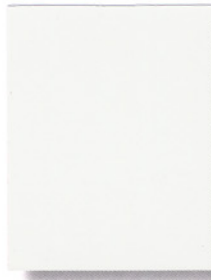
TIGER Drylac™ Smooth Glossy RAL Colors available in Series 38:

| | | | |
|---------------------|---------------------|---------------------|---------------------|
| RAL 1000 • 38/15000 | RAL 5000 • 38/40000 | RAL 6018 • 38/50018 | RAL 7037 • 38/70037 |
| RAL 1001 • 38/15001 | RAL 5001 • 38/40001 | RAL 6019 • 38/50019 | RAL 7038 • 38/70038 |
| RAL 1002 • 38/20002 | RAL 5002 • 38/40002 | RAL 6020 • 38/50020 | RAL 7039 • 38/70039 |
| RAL 1004 • 38/20004 | RAL 5003 • 38/40003 | RAL 6021 • 38/50021 | RAL 7040 • 38/70040 |
| RAL 1005 • 38/20005 | RAL 5004 • 38/40004 | RAL 6022 • 38/50022 | RAL 7042 • 38/70042 |
| RAL 1006 • 38/20006 | RAL 5005 • 38/40010 | RAL 6024 • 38/50024 | RAL 7043 • 38/70043 |
| RAL 1011 • 38/15011 | RAL 5007 • 38/40007 | RAL 6025 • 38/50025 | RAL 7044 • 38/70044 |
| RAL 1012 • 38/20012 | RAL 5008 • 38/40008 | RAL 6026 • 38/50026 | RAL 7045 • 38/70045 |
| RAL 1013 • 38/10013 | RAL 5009 • 38/40009 | RAL 6027 • 38/50027 | RAL 7046 • 38/70002 |
| RAL 1014 • 38/15014 | RAL 5010 • 38/40016 | RAL 6028 • 38/50028 | RAL 7047 • 38/70047 |
| RAL 1015 • 38/15015 | RAL 5011 • 38/40011 | RAL 6029 • 38/50029 | RAL 8000 • 38/60000 |
| RAL 1016 • 38/20016 | RAL 5012 • 38/40012 | RAL 6032 • 38/50032 | RAL 8001 • 38/60005 |
| RAL 1017 • 38/20017 | RAL 5013 • 38/40013 | RAL 6033 • 38/50033 | RAL 8002 • 38/60002 |
| RAL 1018 • 38/20018 | RAL 5014 • 38/40014 | RAL 6034 • 38/50034 | RAL 8003 • 38/60003 |
| RAL 1019 • 38/15019 | RAL 5015 • 38/40015 | RAL 7000 • 38/70000 | RAL 8004 • 38/60004 |
| RAL 1020 • 38/20020 | RAL 5017 • 38/40017 | RAL 7001 • 38/70003 | RAL 8007 • 38/60007 |
| RAL 1021 • 38/20021 | RAL 5018 • 38/40020 | RAL 7002 • 38/70007 | RAL 8008 • 38/60008 |
| RAL 1023 • 38/20023 | RAL 5019 • 38/40019 | RAL 7003 • 38/70017 | RAL 8011 • 38/60011 |
| RAL 1024 • 38/20024 | RAL 5020 • 38/40018 | RAL 7004 • 38/70004 | RAL 8012 • 38/60012 |
| RAL 1027 • 38/20027 | RAL 5021 • 38/40021 | RAL 7005 • 38/70005 | RAL 8014 • 38/60010 |
| RAL 1032 • 38/20032 | RAL 5022 • 38/40022 | RAL 7006 • 38/70006 | RAL 8015 • 38/60015 |
| RAL 2001 • 38/23170 | RAL 5023 • 38/40023 | RAL 7008 • 38/70008 | RAL 8016 • 38/60016 |
| RAL 2002 • 38/25002 | RAL 5024 • 38/40024 | RAL 7009 • 38/70009 | RAL 8017 • 38/60017 |
| RAL 2010 • 38/25001 | RAL 6000 • 38/50000 | RAL 7010 • 38/70014 | RAL 8019 • 38/60019 |
| RAL 3000 • 38/30000 | RAL 6001 • 38/50005 | RAL 7011 • 38/70011 | RAL 8022 • 38/60022 |
| RAL 3001 • 38/30001 | RAL 6002 • 38/50023 | RAL 7012 • 38/70012 | RAL 8023 • 38/60023 |
| RAL 3002 • 38/30002 | RAL 6003 • 38/50003 | RAL 7013 • 38/70013 | RAL 8024 • 38/60024 |
| RAL 3003 • 38/30003 | RAL 6004 • 38/50004 | RAL 7015 • 38/70015 | RAL 8025 • 38/60025 |
| RAL 3004 • 38/30004 | RAL 6005 • 38/50002 | RAL 7016 • 38/70016 | RAL 8028 • 38/60028 |
| RAL 3005 • 38/30005 | RAL 6006 • 38/50006 | RAL 7021 • 38/70021 | RAL 9001 • 38/10001 |
| RAL 3007 • 38/30007 | RAL 6007 • 38/50007 | RAL 7022 • 38/70022 | RAL 9002 • 38/10002 |
| RAL 3009 • 38/30009 | RAL 6008 • 38/50008 | RAL 7023 • 38/70023 | RAL 9003 • 38/10003 |
| RAL 3011 • 38/30011 | RAL 6009 • 38/50009 | RAL 7024 • 38/70024 | RAL 9004 • 38/80004 |
| RAL 3012 • 38/30012 | RAL 6010 • 38/50031 | RAL 7026 • 38/70026 | RAL 9005 • 38/80010 |
| RAL 3013 • 38/30013 | RAL 6011 • 38/50011 | RAL 7030 • 38/70027 | RAL 9010 • 38/10004 |
| RAL 3016 • 38/30016 | RAL 6012 • 38/50012 | RAL 7031 • 38/70031 | RAL 9011 • 38/80001 |
| RAL 3020 • 38/30021 | RAL 6013 • 38/50013 | RAL 7032 • 38/70001 | RAL 9016 • 38/10010 |
| RAL 3031 • 38/30031 | RAL 6014 • 38/50014 | RAL 7033 • 38/70033 | RAL 9017 • 38/80017 |
| RAL 4002 • 38/30008 | RAL 6015 • 38/50015 | RAL 7034 • 38/70034 | RAL 9018 • 38/10018 |
| RAL 4004 • 38/30024 | RAL 6016 • 38/50016 | RAL 7035 • 38/70035 | |
| RAL 4007 • 38/30025 | RAL 6017 • 38/50017 | RAL 7036 • 38/70036 | |

Please refer to our RAL Exterior brochure for a display of RAL colors to go with above listed Series 38 product numbers.



TIGER Drylac® 38/10130
Seashell White 30±5*



TIGER Drylac® 38/10070
Bone White 30±5*



TIGER Drylac® 38/70048
Sky Grey 30±5*



TIGER Drylac® 38/15003
Almond 30±5*



TIGER Drylac® 38/15012
Sandstone 30±5*



TIGER Drylac® 38/70070
Taupe 30±5*



TIGER Drylac® 38/15002
Sierra Tan 30±5*



TIGER Drylac® 38/70025
Ash Grey 30±5*



TIGER Drylac® 38/70019
Slate Grey 30±5*



TIGER Drylac® 38/60014
Medium Bronze 30±5*



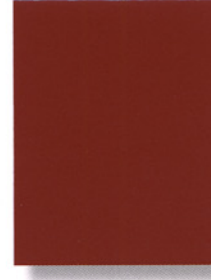
TIGER Drylac® 38/60018
Koko Brown 30±5*



TIGER Drylac® 38/30033
Boysenberry 20±5*



TIGER Drylac® 38/30041
Redwood 30±5*



TIGER Drylac® 38/30028
Brick Red 20±5*



TIGER Drylac® 38/50035
Seafoam Green Metallic



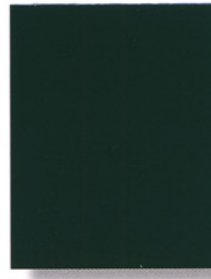
TIGER Drylac® 38/60006
Aged Copper 20±5*



TIGER Drylac® 38/50080
Ivy Green 30±5*



TIGER Drylac® 38/50037
Classic Green 30±5*



TIGER Drylac® 38/50110
Hartford Green 30±5*



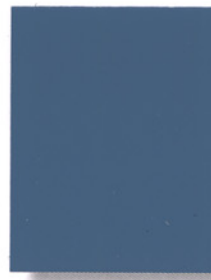
TIGER Drylac® 38/60080
Statuary Bronze 30±5*



TIGER Drylac® 38/60060
Medium Bronze Metallic*



TIGER Drylac® 38/40025
Interstate Blue 20±5*



TIGER Drylac® 38/40051
Military Blue 30±5*



TIGER Drylac® 38/70049
Silver Grey 30±5*

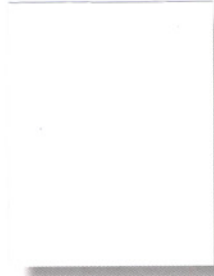


TIGER Drylac® 38/80020
Jet Black 30±5*

*Gloss level according to Gardner 60° ASTM D523. Paper and ink limitations of color samples as well as influence from heat and light account for differences from actual powder coatings.



TIGER Drylac® 38/00001
Clear 90+



TIGER Drylac® 38/10007
Bianco 302 85±5*



TIGER Drylac® 38/70032
Grey Classic 303 85±5*



TIGER Drylac® 38/70056
Grey Classic 310 85±5*



TIGER Drylac® 38/15009
Crème 305 85±5*



TIGER Drylac® 38/15007
Crème 303 85±5*



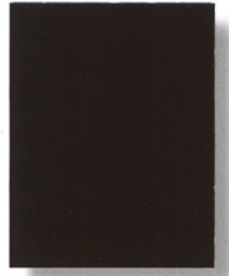
TIGER Drylac® 38/15005
Crème 301 85±5*



TIGER Drylac® 38/60021
Marrone 305 85±5*



TIGER Drylac® 38/60026
Marrone 306 85±5*



TIGER Drylac® 38/60039
Marrone 308 85±5*



TIGER Drylac® 38/50039
Highland 305 85±5*



TIGER Drylac® 38/50038
Highland 304 85±5*



TIGER Drylac® 38/50040
Highland 306 85±5*



TIGER Drylac® 38/50041
Highland 307 85±5*



TIGER Drylac® 38/60031
Marrone 302 85±5*



TIGER Drylac® 38/30035
Rosso 306 85±5*



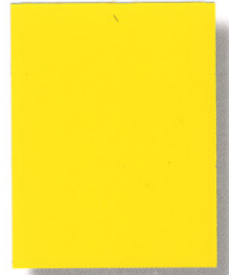
TIGER Drylac® 38/30034
Rosso 305 85±5*



TIGER Drylac® 38/25006
Sunset 302 85±5*



TIGER Drylac® 38/20011
Deore 307 85±5*



TIGER Drylac® 38/20009
Deore 305 85±5*



TIGER Drylac® 38/40031
Azzurro 305 85±5*



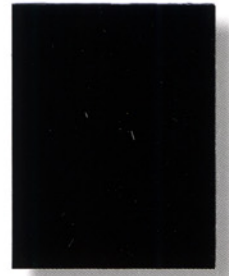
TIGER Drylac® 38/40033
Azzurro 307 85±5*



TIGER Drylac® 38/70054
Grey Classic 308 85±5*



TIGER Drylac® 38/70061
Grey Classic 314 85±5*



TIGER Drylac® 38/80002
Carbon 301 85±5*

*Gloss level according to Gardner 60° ASTM D523. Paper and ink limitations of color samples as well as influence from heat and light account for differences from actual powder coatings.



TIGER Drylac® 38/90003
Argento 301 Metallic



TIGER Drylac® 38/90010
Marine Silver



TIGER Drylac® 38/90007
Argento 305 Metallic



TIGER Drylac® 38/90011
Argento 308 Metallic



TIGER Drylac® 38/90015
Pearl Dark Grey



TIGER Drylac® 38/90016
Argento 312 Metallic



TIGER Drylac® 38/90018
Argento 314 Metallic



TIGER Drylac® 38/60090
Dark Anodized Bronze 20±5*



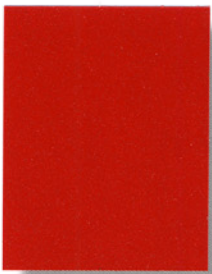
TIGER Drylac® 38/30048
Pearl Ruby Red



TIGER Drylac® 38/30043
Rosso 302 Metallic



TIGER Drylac® 38/60064
Pearl Copper



TIGER Drylac® 38/30042
Rosso 301 Metallic



TIGER Drylac® 38/50131
Pearl Green



TIGER Drylac® 38/50135
Pearl Opal Green



TIGER Drylac® 38/50043
Highland 301 Metallic



TIGER Drylac® 38/40035
Azzurro 301 Metallic



TIGER Drylac® 38/40127
Pearl Night Blue



TIGER Drylac® 38/20014
Deore 302 Metallic



TIGER Drylac® 38/15018
Champagne 302 Metallic



TIGER Drylac® 38/15017
Champagne 301 Metallic



TIGER Drylac® 38/15021
Champagne 304 Metallic



TIGER Drylac® 38/20013
Deore 301 Metallic



TIGER Drylac® 38/15020
Champagne 303 Metallic



TIGER Drylac® 38/90009
Argento 307 Metallic



TIGER Drylac® 38/91020
Anodized Silver