



This Service Information bulletin supersedes S.I. B00 01 07 **dated March 2007.**

**NEW** designates changes to this revision

**SUBJECT**

**New Vehicle Preparation and Maintenance Requirements**

**MODEL**

**NEW** 2008 328i Sedan, 328i SULEV/PZEV, 328xi, 328xi SULEV/PZEV, 335i, 335xi (E90)

**NEW** 2008 328i Coupe, 328i SULEV/PZEV, 328xi, 328xi SULEV/PZEV, 335i, 335xi (E92)

**NEW** 2008 328i, 328xi Sports Wagon (E91)

**NEW** 2008 328i, 328i SULEV/PZEV, 335i convertible (E93)

2008 528i, 528xi, 535i, 535xi, 550i, M5 Sedan (E60)

2008 535xiT Sports Wagon (E61)

**NEW** 2008 650i, M6 Coupe (E63)

**NEW** 2008 650i, M6 Convertible (E64)

**NEW** 2008 750i (E65)

**NEW** 2008 750Li, 760Li (E66)

**NEW** 2008 Z4 Roadster 3.0i, Z4 Roadster 3.0si, M Roadster (E85)

**NEW** 2008 Z4 Coupe 3.0si, M Coupe (E86)

**SITUATION**

<b>Model</b>	<b>Production Start*</b>	<b>Comments</b>
<b>NEW</b> 328i, 335i Coupe	9/07	No changes from 2007
<b>NEW</b> 328i, 335i Sedan	9/07	No changes from 2007
<b>NEW</b> 328xi, 335xi Sedan; 328xi Coupe	9/07	No changes from 2007
<b>NEW</b> 328i, 328xi Sedan; 328i, 328xi Coupe SULEV/PZEV	9/07	No changes from 2007
<b>NEW</b> 335xi Coupe	9/07	New model
<b>NEW</b> 328i, 328xi Sports Wagon	9/07	No changes from 2007
<b>NEW</b> 328i, 328i SULEV/PZEV, <b>NEW</b> 335i Convertible	9/07	No changes from 2007

528i, 528xi, 535i, 535xi, 535xi Sports Wagon	3/07	New N52K (528i) and N54 (535i) engines. 528i replaces the 525i, and 535i replaces 530i.
550i	3/07	No drivetrain changes
M5	3/07	No drivetrain changes
<b>NEW</b> 650i Coupe, Convertible	9/07	LCI
<b>NEW</b> M6 Coupe	9/07	LCI
<b>NEW</b> M6 Convertible	9/07	LCI
<b>NEW</b> 750i, 750Li, 760Li	9/07	No changes from 2007
<b>NEW</b> Z4 Roadster 3.0i, 3.0si	10/07	No changes from 2007
<b>NEW</b> Z4 M Roadster	10/07	No changes from 2007
<b>NEW</b> Z4 Coupe 3.0si	10/07	No changes from 2007
<b>NEW</b> Z4 M Coupe	10/07	No changes from 2007

\*availability approx. 1 month later.

The 2008 5 Series receives numerous equipment and design changes as part of the Life Cycle Impulse (LCI):

- Front bumper
- Headlamps
- Kidney Grill
- Tail lamps
- Rocker panel
- Interior material and trim enhancements
- Electronic Shift Selector Lever on optional Automatic Transmission (similar to 2007 X5)
- Optional "soft-close" doors on M5
- New Engines for 528i and 535i:

<b>Model</b>	<b>2008 535i</b>	<b>2007 530i</b>	<b>2008 528i</b>	<b>2007 525i</b>
full designation	N54B30 O0	N52B30 OL	N52B30 M1	N52B30 UL
displacement (cc)	2979	2996	2996	2996
bore, stroke (mm)	84x89.6	85x88	85x88	85x88
maximum output, hp	300 @ 5800	255 @ 6600	230 @ 6500	215 @ 6250

maximum torque, lb. ft	300 @ 1400 - 5000	220 @ 2750	200 @ 2750	185 @ 2750
compression ratio, :1	10.2	10.7	12.1	10.7
injection	high-precision direct injection (HPI) with piezo injectors	manifold injection	manifold injection	manifold injection
intake	Air-to-air intake charge cooling. Twin turbochargers integrated into both exhaust manifolds.	naturally aspirated	naturally aspirated	naturally aspirated
valvetrain	double VANOS	double VANOS and Variable Valve Timing (VVT)	double VANOS and Variable Valve Timing (VVT)	double VANOS and Variable Valve Timing (VVT)
engine block	aluminum	alu-magnesium	alu-magnesium	alu-magnesium
spark plug thread	12mm	14mm	14mm	14mm
DME engine management	MSD80	MSV70	MSV80	MSV70

All 2008 5 Series receive a new D-CAN system for quicker diagnosis than the previously utilized D-BUS. The D-CAN requires a new On-Board Diagnostics (OBD) cable which will only work with the OPS diagnostic head. Refer to [SI B07 02 06](#) for more information.

**NEW** The 2008 6 Series also receives numerous equipment and design changes as part of the Life Cycle Impulse (LCI):

- **NEW** Front bumper (not applicable to M versions)
- **NEW** Rear bumper (not applicable to M versions)
- **NEW** Headlamp units
- **NEW** Kidney Grill
- **NEW** Rocker Panels
- **NEW** Trunklid (which now incorporates the Center High-Mounted Stop Lamp on the coupe)
- Tail lamps
- Interior material and trim enhancements
- Electronic Shift Selector Lever on optional Automatic Transmission

**NEW** All referenced models: Tire Pressure Monitor (TPM). Federal Regulations require all motor vehicle manufacturers to implement a system which monitors the tire pressures as of 9-1-07 vehicle production. BMW has already phased such a system into all models since 3/07. TPM needs to be reset whenever the tire pressures are adjusted (i.e. QC1, Standard Operations). Set the pressures to the values indicated on the Tire Pressure Placard found on the driver's B-pillar.

### Quality Certification 1 (QC1):

**NEW** New QC1 forms been developed for the additional 2008 models now covered in this Bulletin: SD92-339. *The QC1 form with print date 7/07 contains the 3, 6, 7 and Z4 versions*, in addition to the original form that only specified the 5 Series.

Vehicles being prepared on the GT1 for customer delivery (in contrast to those for demo service or showroom display), must have the current date on which you perform the QC1 entered in "Date of First Registration". This is usually close enough to the actual date where the car will be registered.

2008 3 Series receive a new warning indicator in the Instrument Cluster, showing that the Transport Mode is active. The warning indicator is permanently turned off upon deleting transport mode, as well as the full and successful completion of the "pre-delivery check" using DISplus or GT1 (i.e. date of first registration, Roadside Assistance, etc). Refer to [SI B00 06 07](#) for more information.

**NEW** All referenced models ordered with the optional iPod and USB Adapter will require an iPod interface cable, which must be presented to the customer. Refer to S.I. B65 29 07. Vehicles with this option processed at the Vehicle Distribution Centers as of October 1, 2007 will have the interface cable already included (placed in the glovebox). It will no longer be necessary to order the cable separately.

**NEW** Floor mats can either be standard equipment on some models, or an Aftersales accessory specified by the BMW center or the customer. A new operation for the QC1 is to make certain that the floor mats, if present, are installed and their retention systems firmly anchored to the floor carpet. This should ensure that the mats maintain their positioning. Refer to BMW Centernet, Aftersales Portal, bulletin

51 07 07.

### Service Maintenance:

Minor changes compared to 2007 models. N54 engines require their spark plugs to be replaced more frequently than N52K engines due to the nature of the direct-injection process utilized on the N54 engine. Condition Based Service (CBS) no longer displays the spark plug replacement interval on any 3, 5 or 6 Series.

### **NEW** Summary of Spark Plug Replacement Intervals:

Primary Model	Engine	Interval (miles)	Comments
328i, 328xi, 528i	N52K	100,000	No change from '07 models
328i SULEV/PZEV	N51	100,000	"
335i, 335xi, 535i	N54	45,000	"
550i, 650i, 750i	N62TU	100,000	"
760Li	N73	100,000	"
M5, M6	S85	37,000	"
Z4 roadster 3.0i, 3.0si, Z4 coupe 3.0si	N52	100,000	"

M roadster, M coupe      S54      60,000      "

All Referenced Models: Engine oil should be changed at least once per year. The BMW Maintenance Program allows for this operation if a vehicle does not travel enough to have a BMW Engine Oil Service performed. This detail is listed in the respective Service/Warranty booklet. Please make customers aware of this important fact when you review an upcoming Service Appointment. Refer to [SI B00 04 01](#).

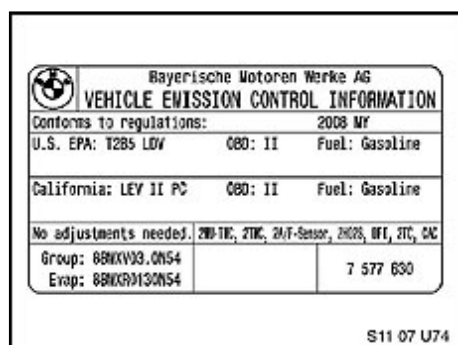
**NEW** All referenced models: At each Standard Operation, check the condition of the tires (inner and outer sidewalls; tread) as well as the tire inflation pressure. Reset TPM.

**NEW** All referenced models- Reminder: The BMW engine coolant has a lifetime rating, except when the cooling system requires repairs. Drained coolant is not to be re-used. Top-up with new coolant. Refer to [SI B17 01 06](#).

**NEW** All 6 Series: CBS no longer displays the spark plug replacement interval, nor the ventilation system microfilter interval. The microfilter needs to be changed at every 3rd Engine Oil Service.

**NEW** 2008 Z4 and M versions of the roadster and coupe utilize a new Maintenance Checklist SD92-353.

### General Notes:



The Vehicle Emission Control Information placard, located in the engine compartment, has a new format and appearance. It no longer shows the vacuum hose routing diagram, nor the model.

This placard shows the N54 engine in the 535i, but is similar for other models and engines.

**NEW** All referenced models: Monroney Label information for EPA fuel economy.

**NEW** The Environmental Protection Agency (EPA) is requiring changes to the fuel economy ratings for the entire automotive industry, effective as of Sept 1 2007 on all 2008MY vehicles. The new estimates are intended to reflect today's driving habits; the method had not been updated in 20 years. The new estimates are generally lower. This is why ratings on current 2008 models, with no changes to the drivetrain, appear to be "worse" than their 2007 model year versions.

2008 Service and Warranty Information booklets:

<b>NEW</b> 3 Series	SD92-341
528i, 525xi, 535i, 535xi, 535xiT, 550i	SD92-336
M5, M6	SD92-337
<b>NEW</b> 650i coupe and convertible	SD92-342
<b>NEW</b> 7 Series	SD92-343
<b>NEW</b> Z4 roadster 3.0i, 3.0si; Z4 coupe 3.0si	SD92-345
<b>NEW</b> M roadster, M coupe	SD92-346

Vehicle Data Status (Integration level) is:

<b>NEW</b> 3 Series	CIP/Progman V27.0	E89x-07-09-515
<b>NEW</b> 5 Series (9/07)	CIP/Progman V27.0	E060-07-09-515
5 Series (3/07)	CIP/Progman V25.0	E060-07-03-510
<b>NEW</b> 6 Series	CIP/Progman V27.0	E060-07-09-515
<b>NEW</b> 7 Series	CIP/Progman V27.0	E065-07-09-515/800

**PARTS INFORMATION:**

Under separate cover, one pack of the Quality Certification I form for the 2008 BMWs will be sent to each BMW center's Service Manager. Additional copies may be ordered as listed below:

Item	Description	Qty	Price
SD92-339, <b>NEW</b> 7/07	Quality Certification I form (2008 3, 5, 6, 7 Series and Z4)	1 pack (= 25 forms)	\$4.75
<b>NEW</b> SD92-353	Service Maintenance checklist (2008 Z4 and M roadsters and coupes)	1 pack (= 25 forms)	\$4.75

These items are available online at BMW TIS under Materials Ordering. Refer to bulletin [B10 02 02](#) for instructions on how to place an order.

**WARRANTY INFORMATION**

2008 Model Year QCI payments will be automatically issued to BMW centers upon reporting a 2008 model year vehicle as retailed, or by placing the vehicle in service as a BMW center demonstrator or Service/Loaner vehicle. The payments, processed via a miscellaneous billing, will be based on the display and delivery check flat rates as published, utilizing each BMW center's warranty labor rate. The QCI line item on the repair order should be charged internally to the New Vehicle Sales Department.

**Service**

QC I	Display and Delivery Check* Labor Allowance (FRU)
<b>NEW</b> 3 Series	13
528i, 535i, 550i, M5	12
535xiT	12
<b>NEW</b> 6 Series	13
<b>NEW</b> 7 Series	12
<b>NEW</b> Z4 Roadster (all, incl. M)	12
<b>NEW</b> Z4 Coupe (incl. M)	13

\* value shown is the sum of Display and Delivery check per 9/07 KSD.

**BMW Company Vehicles**

Reimbursement for performing the QCI on BMW company vehicles (of any model year) must still be requested by submitting a claim through DCS using the Spot Delivery codes as listed below:

**Defect Code:** 11 99 99 77 BV  
**Labor Operation:** 00 00 012  
**Flat Rate Units:** Refer to KSD for flat rate times.

Note: BMW company vehicles delivered to field personnel may have already received a full QCI at the Vehicle Distribution Center (VDC) which serves your region. This should be evident upon arrival at your center by the absence of the usual protective seat and door panel covers and battery main-disconnect cable, correct wipers already installed, the Monroney label is not affixed to the window, etc. VDCs affix a small orange-colored label onto the center console near the transmission selector lever which reads "QCI already done at VDC!". If this label is found, remove it prior to delivery to the employee. Please verify that the QCI has already been performed at a VDC on a specific vehicle by contacting your regional Distribution Manager with the chassis#.

### **IMPORTANT:**

As with all work that is reimbursed by BMWNA, the repair order, time recording and record keeping requirements outlined in the Warranty Policy and Procedures Manual must be strictly observed.

Quality Certification I payments are subject to audit.

### **ATTACHMENTS**

view PDF attachment [SD92-339](#).

view PDF attachment [SD92-353](#).

[ Copyright © 2007 BMW of North America, LLC ]