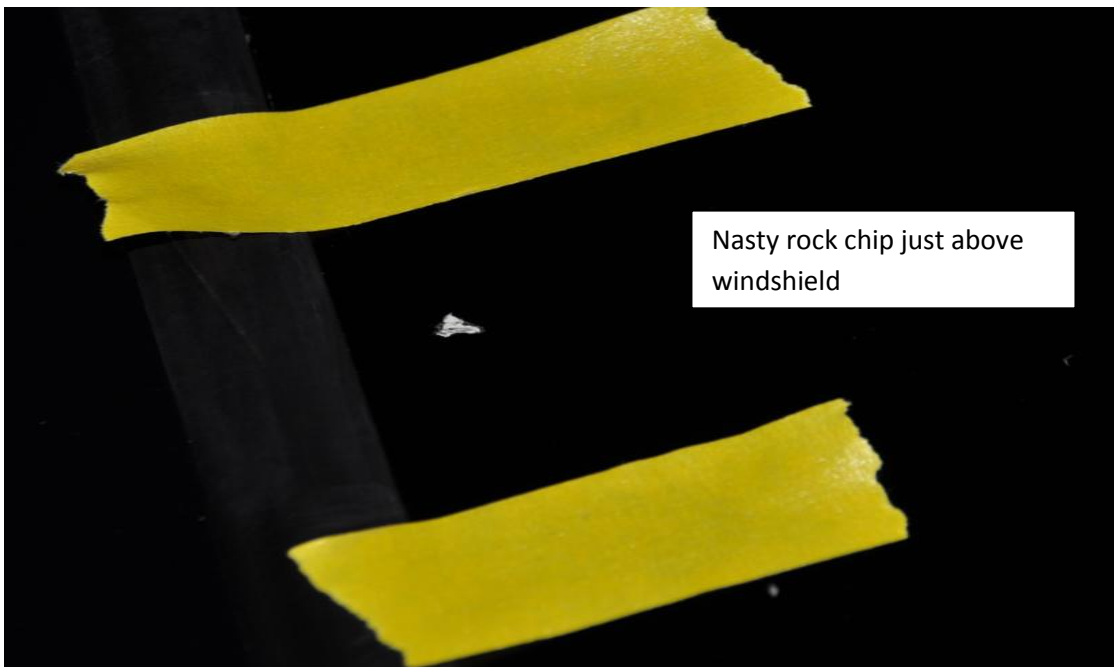


Materials:



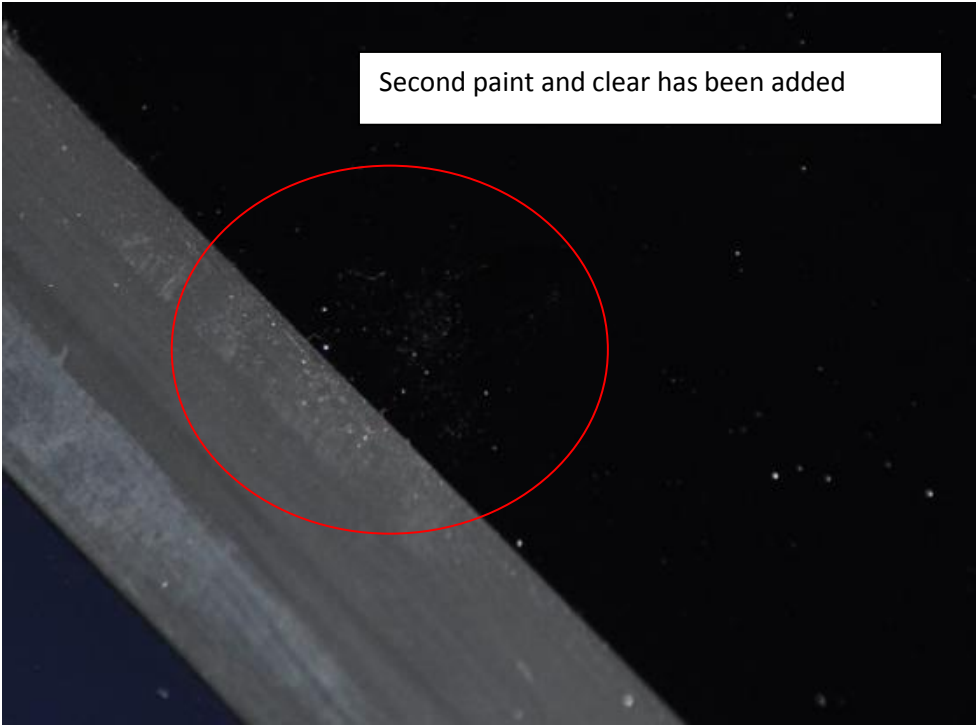
Compound, polishing compound, polish and glaze. Also you need 2000-3000 grit wet paper




Nasty rock chip just above windshield

A close-up photograph of a dark, metallic surface. A small, irregular chip is visible in the center. A white rectangular text box is overlaid on the right side of the image.


Fill chip with paint and try to keep paint inside chip. I got some on the top surface so I had to hit it with sand paper 2500 g to remove it. Reapply to fill as needed. Apply 2K clear mix in chip. Let dry until next day. Sand with 2000-3000 wet paper and buff/polish

A close-up photograph of the same metal surface as in the first image. A red circle highlights a specific area where the chip has been repaired. A white rectangular text box is overlaid at the top of the image.

Second paint and clear has been added



Wet sand with block to keep area flat



Buff with 3m compound clear coat safe



Polish

Apply glaze

