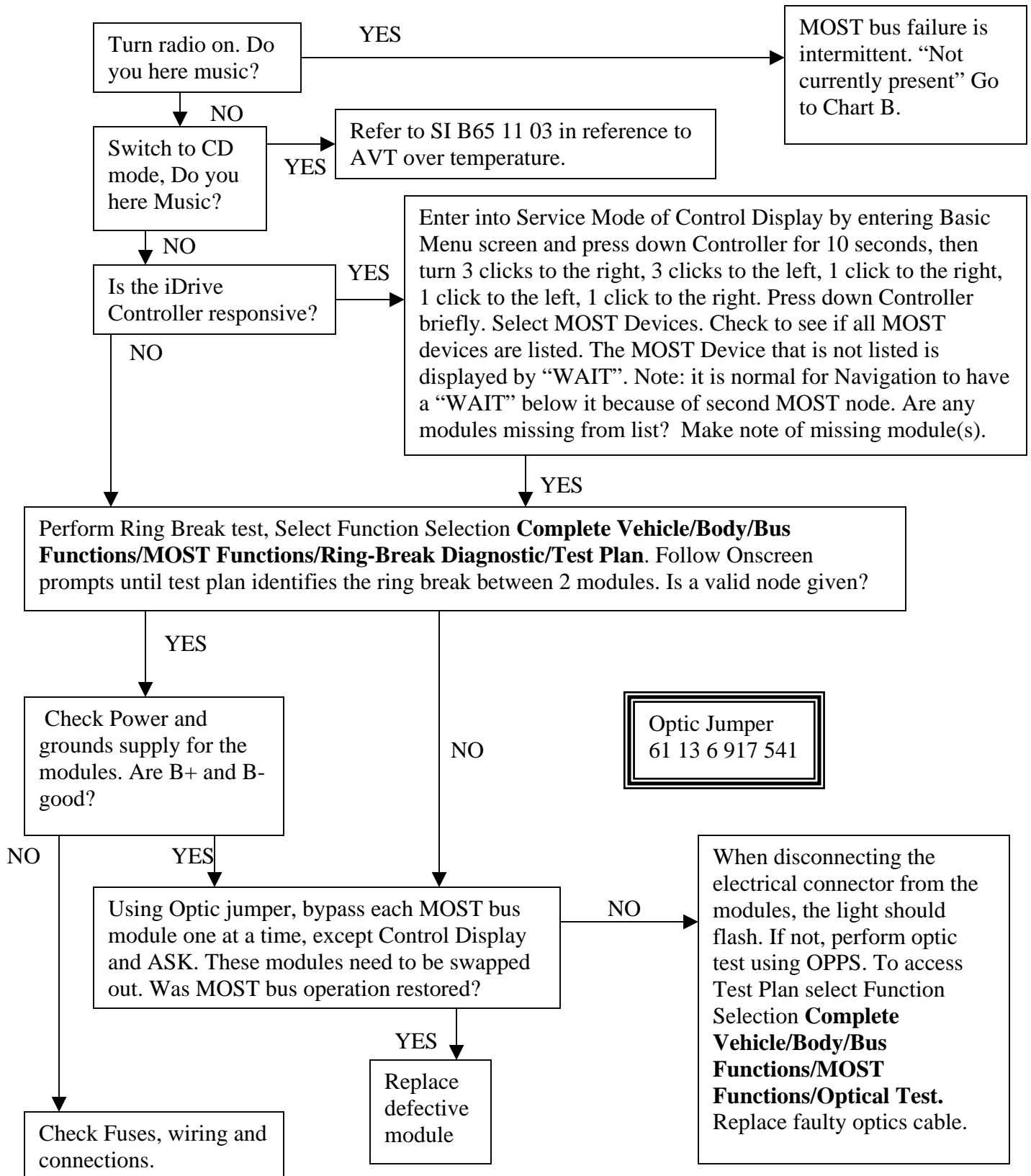
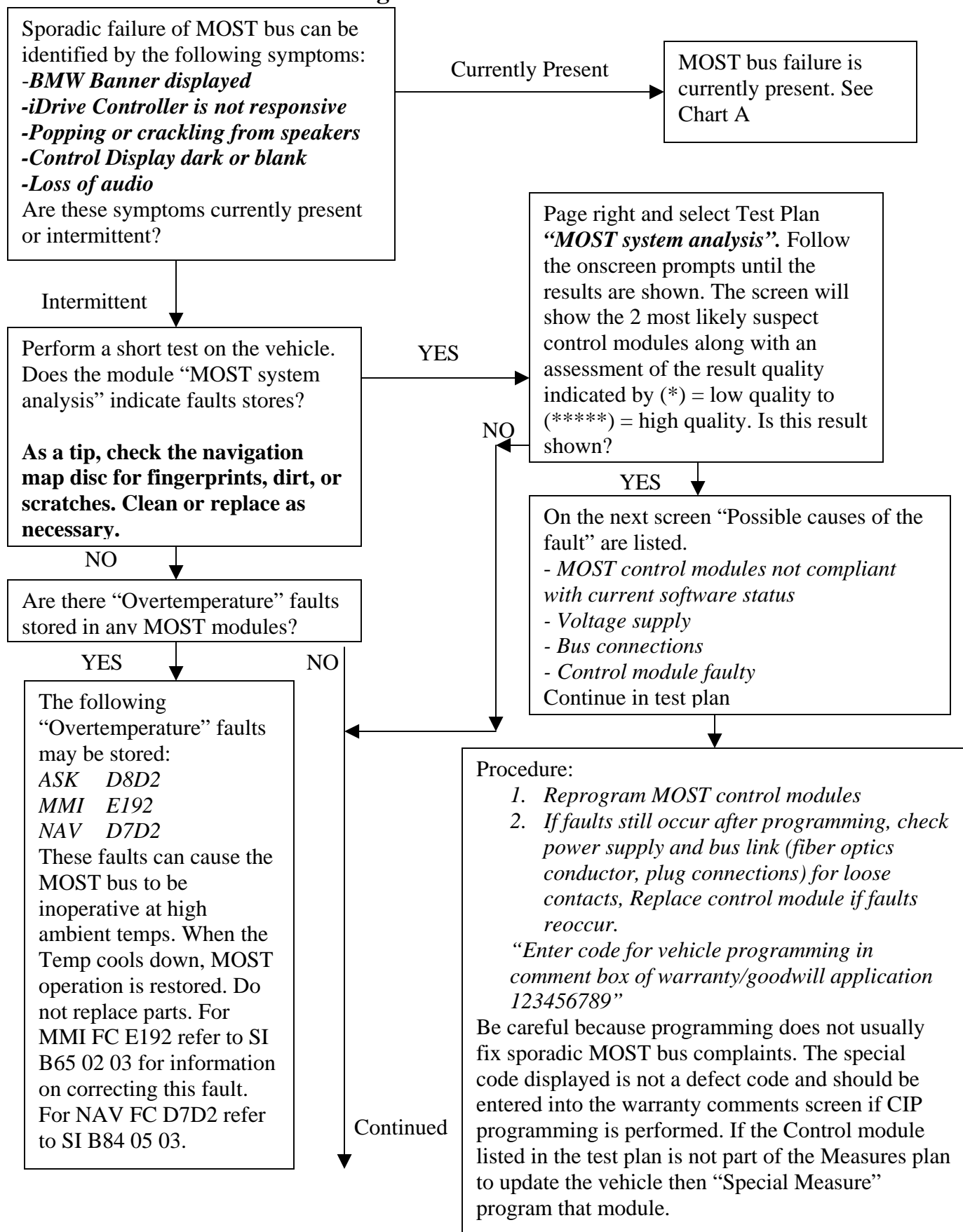
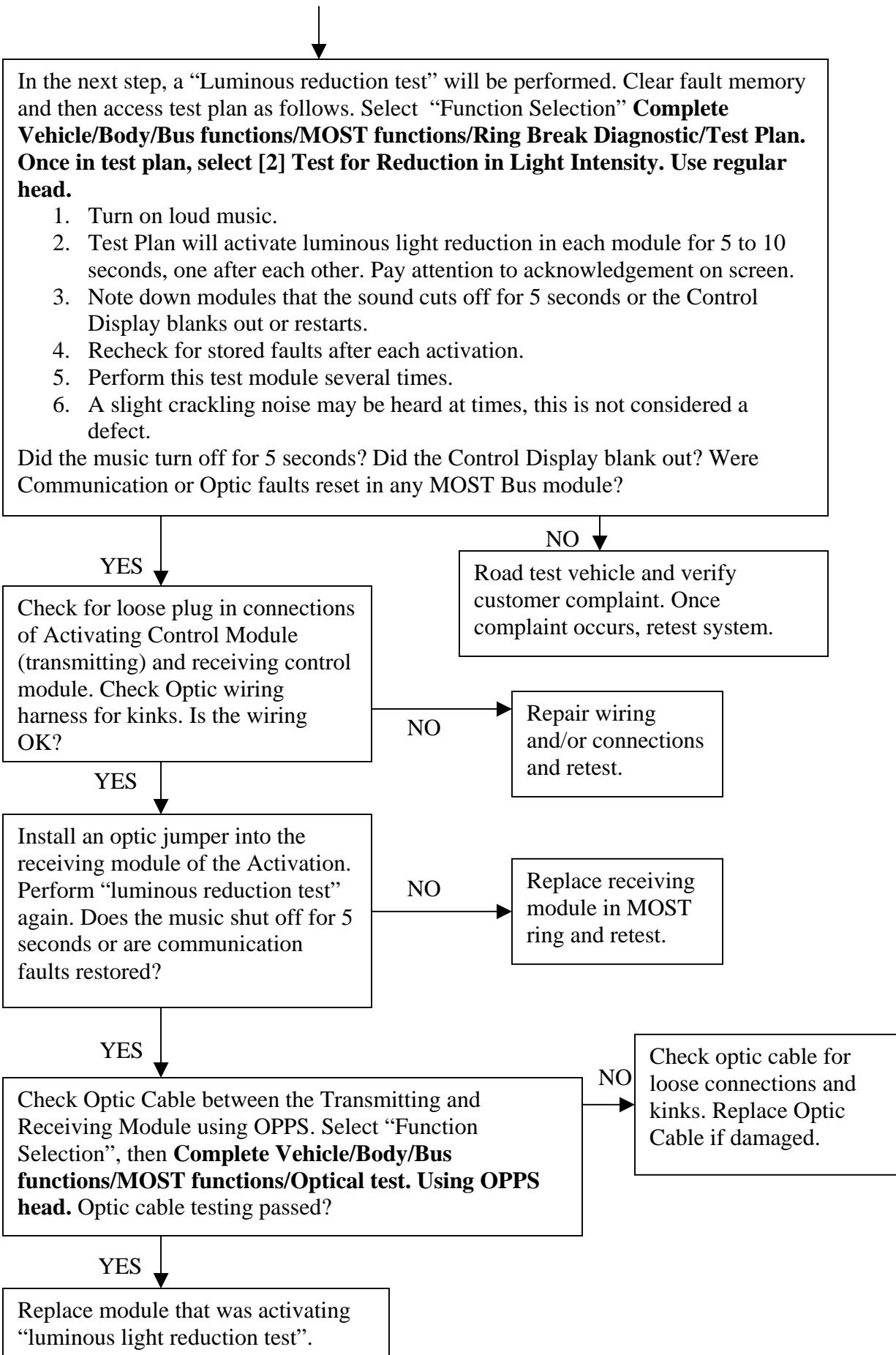


## MOST bus diagnosis Chart A Fault Currently Present



## MOST Bus Diagnosis Chart B Intermittent Fault





Customer complaint when E65 MOST Bus resets

<b>E65 Control Module that resets</b>	<b>What happens to the audio?</b>	<b>What does the customer see in the Control Display?</b>	<b>Other symptoms</b>
<i>Control Display Gateway</i>	Off Permanent	Completely dark, then restarts to BMW banner then "Accept" screen.	
<i>Control Display</i>	Off Permanent	Completely dark, then restarts to BMW banner then "Accept" screen.	
<i>CD Changer</i>	Off Briefly	NAV portion of screen flickers/flashes then returns	CDC shuffles
<i>Logic7 Amp</i>	Off Briefly then returns with lower volume	NAV portion of screen flickers/flashes then returns	
<i>Antenna Tuner</i>	Off Briefly then returns with lower volume	No change or NAV portion of screen flickers/flashes then returns	
<i>Voice Activation</i>	Off Briefly then returns with lower volume	NAV portion of screen flickers/flashes then returns	
<i>Navigation</i>	Off Briefly then returns with lower volume	NAV map portion of screen blanks out and then "Initializes" or NAV portion of screen flashes white/gray.	
<i>Telephone</i>	Off Briefly then returns with lower volume	NAV portion of screen flickers/flashes then returns	
<i>Audio System Controller</i>	Off Briefly then returns with lower volume	NAV portion of screen flickers/flashes then returns	
<i>Instrument Cluster</i>	Off Briefly then returns with lower volume	NAV portion of screen flickers/flashes then returns	Cluster completely dark

Customer complaint when E60/E63/E64 MOST Bus resets (Vehicles with Logic7)

<b>Control Module that resets</b>	<b>What happens to the audio?</b>	<b>What does the customer see in the CID (Central Information Display?)</b>	<b>Other symptoms</b>
<i>CID</i>	No Change	Screen Blanks briefly then returns back	
<i>CCC-ANT</i>	Off briefly	No Change	
<i>CCC-ASK</i>	Off briefly	No Change	
<i>CCC-A (Applications)</i>	Off for 30-40 seconds	Screen goes blank then back to BMW screen, then Accept screen	Resets all CCC
<i>CCC-GW</i>	Off for 30-40 seconds	Screen goes blank then back to BMW screen, then accept screen	Resets all CCC
<i>CCC-BO</i>	Off for 30-40 seconds	Screen goes blank then back to BMW screen, then accept screen	Resets all CCC
<i>TCU</i>	Off briefly	No Change	
<i>Logic7 AMP</i>	Off briefly	No Change	
<i>CDC</i>	Off Briefly	No Change	CDC shuffles