



This Service Information bulletin supersedes SI B13 13 10 **dated December 2010.**

**PERFORM THE PROCEDURE OUTLINED IN THIS SERVICE INFORMATION ON ALL AFFECTED VEHICLES THE NEXT TIME THEY ARE IN THE SHOP FOR MAINTENANCE OR REPAIRS.**

**NEW** designates changes to this revision

#### **SUBJECT**

**Voluntary Emissions Recall Campaign 10E-A02: N54 High-Pressure Fuel Pump (HDP)**

#### **MODEL**

E60, E61, E71, E82, E88, E89, E90, E92, and E93 with the N54 engine produced from 05/26/2006 through 10/20/2009

#### **SITUATION**

An internal component in the high-pressure pump (HDP) may fail, causing drivability symptoms such as longer starting times or erratic engine operation. Should this situation occur, the engine emergency operation (Safe Mode) is activated and the Service Engine Soon lamp (MIL) is illuminated.

#### **Note:**

In this situation, the vehicle can continue to be driven, even for long distances, without the risk of a breakdown.

The low-pressure fuel sensor may deteriorate prematurely due to internal leakage. The Service Engine Soon lamp (MIL) may be illuminated with the appropriate fault code stored in the DME fault memory.

Copy of the customer notification letter is attached.

#### **AFFECTED VEHICLES**

This Emissions Recall Campaign involves E60, E61, E71, E82, E88, E89, E90, E92, and E93 vehicles with N54 engines which were produced from 05/26/2006 through 10/20/2009.

In order to determine whether a specific vehicle has had this Emissions Recall Campaign completed or is affected by this Recall Campaign, first check whether the Recall Completion Label, SD 92-406, is attached to the right (passenger) rear side of the hood in the engine compartment, close to the windshield. If the label is found, the Campaign has already been performed. If the Recall Completion Label is not present, it will be necessary to utilize the "Service Menu" of DCSnet (Dealer Communication System) or the Key Reader. Based on the response of the system, either proceed with the corrective action or take no further action.

#### **CORRECTION**

Read vehicle's fault memory using the current version of ISTA/D. Check, and if required, replace the low-pressure fuel sensor and the high-pressure fuel pump (HDP).

#### **NOTE:**

E89 (Z4) vehicles are not equipped with the low-pressure fuel sensor. A fault memory/low-pressure sensor check should not be performed on E89 vehicles.

#### **PROCEDURE**

1. Use the current ISTA diagnosis software (2.22 or higher). Perform the vehicle test and read the fault memory.

**Note:**

This step does not need to be performed on E89 vehicles.

2. If any of the following low-pressure sensor fault codes (**29F3, 2A2D, 119201, 119202, 11A201, 11A202, 11B211**) are stored in the DME, **replace the low-pressure fuel sensor**. Follow Repair Instruction REP 13 53 594. Clear the fault memory and continue to step 6.
3. If only fault codes 2FBF or 11A401 (Fuel pressure on-release injection; pressure too low) or no faults were stored in the DME memory, go to step 4.
4. Activate the electric fuel pump (EKP) for 20 seconds using ISTA/D and the diagnostic query function (after the vehicle test, select Control unit tree; DME; Call ECU functions; Diagnostic query; and Low-pressure fuel pump with activation).
5. If the low fuel pressure exceeds **6.7 bar** at any time during the measurement period, **replace the low-pressure fuel sensor**. Follow Repair Instruction REP 13 53 594.

If the fuel pressure stays below 6.7 bar, the low-pressure sensor is operating correctly and does not require replacement.

Clear fault memory and continue to step 6.

6. Verify the DCSnet vehicle repair history. If the high-pressure pump was recently replaced with **P/N 13 51 7 613 933**, no more action is required.
7. If the HDP was not replaced previously with P/N 7 613 933, install new high-pressure fuel pump **P/N 13 51 7 616 446**. Follow Repair Instruction REP 13 51 017.

**Important:**

Repair Instructions 13 51 017 and 13 53 594 have been updated with the release of special tool P/N 83 30 0 496 939. The special tool accommodates easy removal of the engine harness block located under the intake manifold. Consequently, the removal of the intake manifold is no longer necessary when replacing the HDP (or low-pressure fuel sensor) on the N54 engine (for more details, refer to [SI B13 10 10](#)).

**NEW IMPORTANT NOTE:**

Both parts numbers (P/N 13 51 7 613 933 and P/N 13 51 7 616 446) incorporate the same level of HDP quality improvements. If necessary, in order to expedite the repair time, you may use the **P/N 13 51 7 613 933** from your center's parts stock supply instead of ordering P/N 13 51 7 616 446 from PDC.

**PARTS INFORMATION**

<b>Part Number</b>	<b>Description</b>	<b>Quantity</b>
13 51 7 616 446	High-pressure pump	1

13 53 7 614 317

Low-pressure sensor

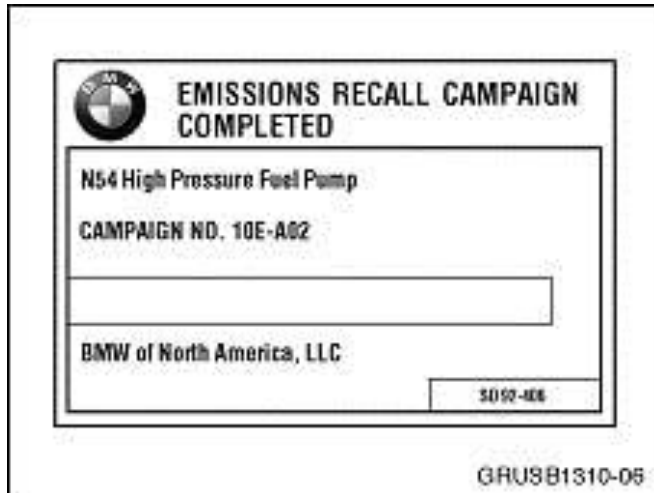
1

13 53 7 582 770

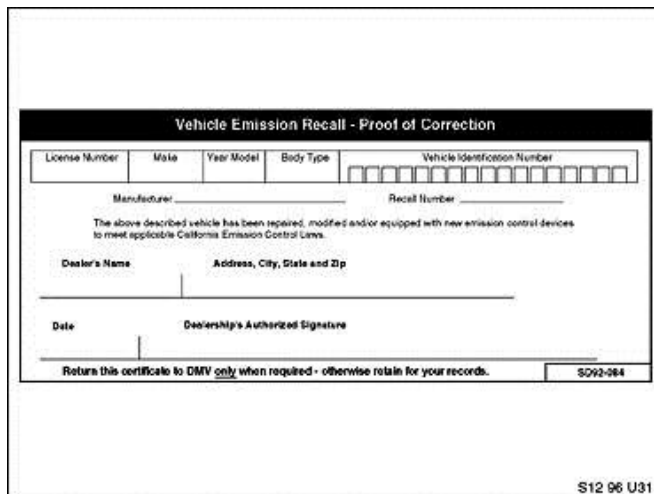
ASA bolt M8X17.5 - AL

1

**LABEL INSTRUCTIONS**



After the vehicle has been checked and corrected, obtain a label (SD 92-406) and with a ball point pen print your dealer code (5 digits) on the Recall Completion Label (see illustration). An initial quantity of 200 labels will be sent to all BMW centers. Peel the label from its backing and affix it to the right (passenger) rear side of the hood in the engine compartment, close to windshield.



For California centers only: It is required by the California Code of Regulations that an executed orange "Vehicle Emission Recall - Proof of Correction" certificate (SD92-084, see illustration) be provided to each customer (for vehicles registered in the state of California), once the Recall on his or her vehicle has been completed.

**Note:** Additional labels can be ordered online at BMW TIS.

**WARRANTY INFORMATION**

The repair described in this bulletin is covered under warranty regardless of time or mileage. Reimbursement for this Recall will be via normal claim entry utilizing the following information:

**Defect Code:** 00 13 93 01 00

**Code:**

**Labor Labor Allowance:**

**Description:**

**Operation:**

00 59 067	E93 – 20 FRU E60 – 19 FRU E61/E71/E82/E88/E90/E92 – 18 FRU	Perform vehicle test, check fault memory and test LP sensor if needed. Replace low-pressure sensor and clear fault memory
00 59 064	E89 – 16 FRU E60 – 22 FRU E61/E71/E93 – 21 FRU E82/E88 – 19 FRU E90/E92 – 20 FRU	Perform vehicle test, check fault memory and test LP sensor if needed. Replace HDP and clear fault memory
00 59 065	E60/E61/E71 – 23 FRU E93 – 22 FRU E82/E88/E90/E92 – 21 FRU	Perform vehicle test, check fault memory and test LP sensor if needed. Replace Low-pressure sensor; replace HDP pump and clear fault memory
00 59 066	E60/E61/E71/E82/E88/E90/E92/E93 – 7 FRU	Perform vehicle test, check fault memory and test LP sensor if needed. No parts replacement is required. Clear fault memory
00 59 086	E89 – 3 FRU	Check warranty history in DCSnet. No HDP replacement required

\*Main Work – Only one main labor operation (ending with 000-499) may appear on any claim or group of claims (warranty, maintenance or campaigns) that are generated from the same repair visit.

All other labor operations on the same line or other lines must be claimed using plus code labor operations (KSD2 labor operations that have a (+) prefix and the last three digits are 500 or a higher number).

**ATTACHMENTS**

view PDF attachment [B131310 Customer Letter](#).