



This Service Information bulletin supersedes S.I. B84 13 04 dated **January 2005**.

NEW designates changes to this revision

SUBJECT

BMW Assist with Integrated Bluetooth

MODEL

E46 (3 Series) from 9/04 production (325i/iA from 10/04 production) with Premium Package (ZPP) or BMW Assist (SA 639)

E83 (X3) from 9/04 production with Premium Package (ZPP) or BMW Assist (SA 639)

E85 (Z4) from 10/04 production with Premium Package (ZPP) or BMW Assist (SA 639)

E53 (X5) from 10/04 production with Premium Package (ZPP) or BMW Assist (SA 639)

E60 (5 Series) from 9/04 production

E63, E64 (6 Series) from 9/04 production

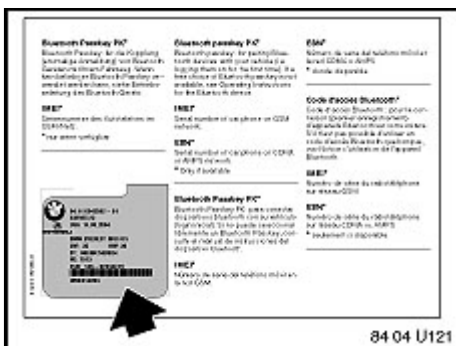
NEW E65, E66 (7 Series) from 3/05 production

NEW INFORMATION

- Starting with all model year 2005 vehicles equipped with BMW Assist (**except E65/66 7 Series from 3/05**) now has integrated Bluetooth capability. Currently, these vehicles will be arriving at your BMW Center with Bluetooth set to active. **No retrofit coding is necessary in order to use this feature.**
- For E60/63/64 voice activation functions are exactly the same as with the CPT9000 telephone
- For E46/E83/E85/E53 vehicles voice activation functions are not part of the TCU. A separate SES module can be installed. Refer to EPC.

- For E46/E83/E85/E53 vehicles produced between 3/2004 and 8/2004, are equipped with a TCU that does not support Bluetooth. On these vehicles the TCU can be replaced at the customer's expense with a 2005 MY TCU. **Cradles may not be added to these vehicles because of wiring incompatibility.**

- Please disregard the Owner's Manual insert, shown to the left, indicating Bluetooth functionality. The hardware in these vehicles will not work correctly.



- For E60/63/64 vehicles produced from 3/04 to 8/04, Bluetooth functionality can be added to most of these vehicles by updating the vehicle software using CIP 13.2 or higher. After this is performed "Retrofit" of "Tel Bluetooth" needs to be performed. Follow the procedure as described in this Service Information for "Activating Bluetooth" and "Pairing the Handset". Vehicles prior to 3/04 would need to have the TCU replaced with the 2005 MY TCU at the customer's expense and the vehicle updated to CIP 13.2 or higher. **Phone docking cradles may not be added to these vehicles because of wiring incompatibility. Note: This software update and retrofit is not covered under warranty and is at the customer's expense.**

5. Please refer to CenterNet for information on approved Bluetooth handsets. To access this information, follow the path as outlined below:
 - Visit the Bluetooth Microsite from CenterNet or point your web browser to www.bmwusa.com/bluetooth for the latest listing of approved handsets and other information on Bluetooth.
 - For further information on the functionality of the telephone, consult the handset Owners Manual.
 - For diagnosis and troubleshooting of the system refer to the "Bluetooth Diagnosis" attachment. Updates to the attachment can be identified by blue text.
 - For information about E46, E83, E85, and E53 refer to the "Bluetooth Users Manual I-Bus vehicles" attached to this service information.
 - For information about E60, E63, and E64 refer to the "Bluetooth Users Manual E60 vehicles" attached to this service information.
6. Stolen Vehicle Recovery service has also been added to subscribers of the BMW Assist program. To access information about Stolen Vehicle Recovery, follow the path as outlined below:
 - Log into CenterNet.
 - From the "Menu" tab select "BMW Assist".
 - Select "Stolen Vehicle Recovery Insurance Discount"
7. Refer to [SI B84 15 03](#) for more information about BMW Assist.

RETROFIT CODING FOR DOCKING CRADLE (NOT NECESSARY UNLESS ADDING CRADLE)

NEW Phone docking cradles can only be installed in 2005 MY or later vehicles with BMW Assist (SA 639) and Bluetooth wireless technology.

E83 (X3)/E85 (Z4)

1. Using the SSS (Software Service Station) or GT1, start CIP 15.2 or higher.
2. Select the appropriate model series selection.
3. Select the vehicle model.
4. Select "Load software".
5. Answer "No" to "Have control modules been replaced?"
6. Select "Retrofits".
7. Select "Retrofits".
8. Select "TEL Bluetooth".
9. Select "Added".
10. The following message will be displayed:

"Retrofit of Telephone with cradle selected. The Vehicle order is changed during the sequence Continue only with "Continue" if the retrofitting scope is already fitted in the vehicle. Otherwise terminate the procedure with "Cancel"

11. Select "Continue".

12. Follow the onscreen prompts to finish coding
13. Exit CIP and check the functionality of the system.

E46 (3 Series)/E53 (X5)

1. If the vehicle is equipped with Navigation, ensure that the warning message has been answered on the Board Monitor screen by pressing the large control knob.
2. Using SSS or GT1 with CD40 or higher, select Coding/Programming.
3. Select (3) ZCS/FA Coding.
4. Select E46 or E53 as applicable.
5. Select "Retrofit".
6. Page down and select "Bluetooth Telephone".
7. On confirmation screen asking if correct, select "YES".
8. Complete the coding per the onscreen instructions.
9. Exit from coding and check the functionality of the system.

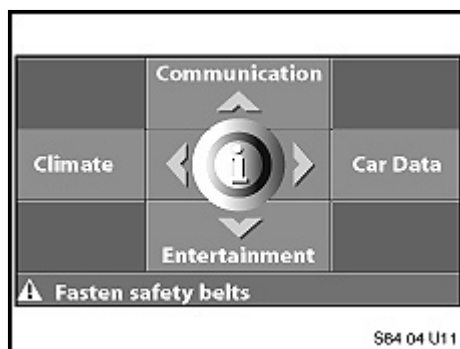
PAIRING PROCEDURE E46/E83/E85/E53

1. Turn Key off and then to KL-R or KL-15.
2. The vehicle is ready for pairing for the first 2 minutes of key on.
3. **NEW** If the R/T button on the MFL is pressed, "Activate Phone" appears on the MID or Board Monitor. For the E53 X5 the seatbelt needs to be plugged in and the R/T button pressed on the MFL and "Activate Phone" appears in the Instrument Cluster.
4. During the pairing process, depending on equipment, the indicator lights on MID or Board Monitor display flash.
5. Your mobile phone should now be set to search for BT devices. See the Owner's Manual for your handset.
6. A request to enter a password, PIN, or code appears on the handset display, depending on your model. Enter the 'BLUETOOTH PASSKEY' (supplied with the vehicle literature), using the numerical keys on the handset and confirm the input. Look for a confirmation message on the handset.
7. To conclude the pairing process, turn the key off.
8. Wait approximately 30 seconds before turning the key back on. The phone will now be connected when the key is turned on. It may take several minutes to initially load the phone book stored in the handset depending on the number of entries.

ACTIVATING BLUETOOTH E60/E63/E64

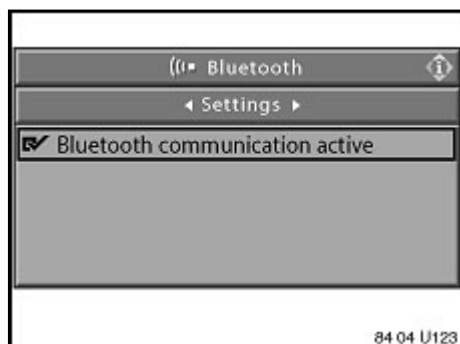
1. This procedure must be carried out first in order to properly pair a handset to the vehicle.

2. From the start menu press briefly down on the



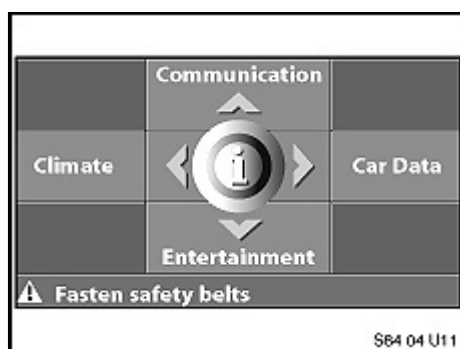
controller.

3. Scroll down to the "Communication settings" and select.



4. Select "Bluetooth" and press controller.
5. Select "Settings" and press controller.
6. Select "Bluetooth communication active" and press the controller to activate the connection.
7. Exit back to the start menu.

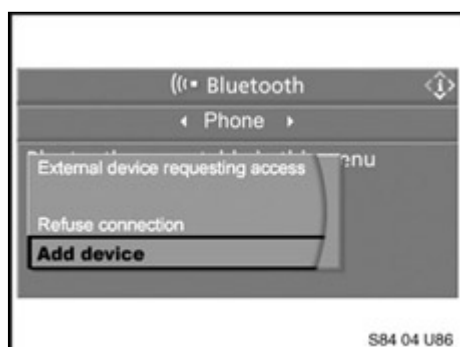
PAIRING THE HANDSET TO THE VEHICLE E60/E63/E64



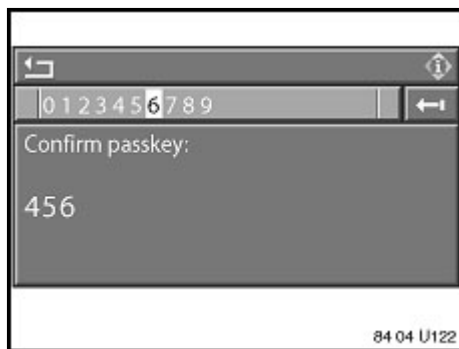
1. Turn the key on.
2. From the start menu press briefly down on the controller.
3. Scroll down to the "Communication settings" and select.



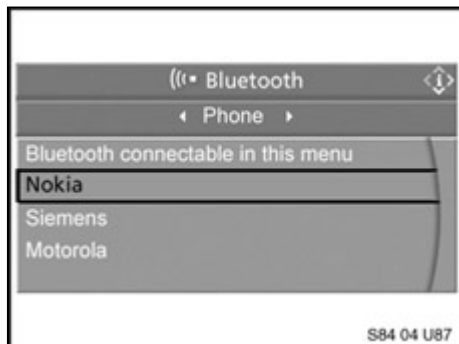
4. Select "Bluetooth" and press controller.
5. Select "Phone" and press controller.
6. Once the message "Bluetooth connectable in this menu" is displayed the vehicle is in pairable mode.



7. Your handset should now be set to search for BT devices. See the handset Owner's Manual for your specific handset.
8. In order to pair you must enter a random passkey both via the handset and via the CID. The passkey can be any number that you choose up to 16 digits long.
9. Via the CID select "Add device" and press controller.

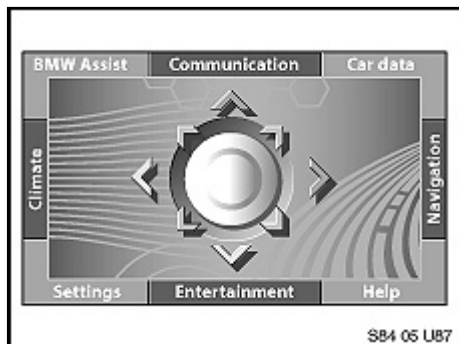


10. Enter your passkey. Depending on the handset, you will have approximately 30 seconds to enter the passkey on the handset and the CID.
11. Enter the same passkey in the handset and in the display.
12. Select "Confirm passkey and press the controller.



13. After a few seconds your device will be listed.
14. Depending on the handset, the device will ask you to accept connection.
15. You must exit this menu in order for the handset to operate correctly.
16. Turn the key off. When the key is turned on the handset will connect and transfer the phonebook entries from the handset. This may take several minutes depending on the size of the phonebook.
17. Up to 4 handsets can be paired to the vehicle.
18. Please consult the Owner's Manual of the handset for additional information.

PAIRING INSTRUCTIONS E65 FROM 3/05



1. Ensure that the Control Display is at least past the "Accept" screen.
2. Turn ignition on. For the first 2 minutes of ignition on the vehicle is in pairing mode.

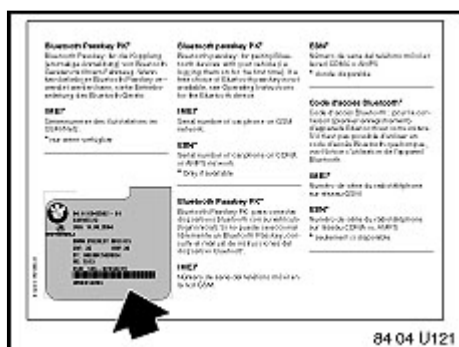
3. Have the Bluetooth "Passkey" available. This can be found from insert in the information kit in the vehicle.

4. Refer to the Owner's Manual of the individual handset, for detecting, connecting, or coupling a Bluetooth unit. As an example on the Motorola V600: Select Settings/Connection/Bluetooth Link/Handsfree/Look for devices

5. The handset will now scan for Bluetooth devices available.

6. The vehicle will be identified by the VIN number displayed in the handset.

7. Select the VIN number and Bond (Pair) the



handset to the vehicle.

8. When prompted enter the Passkey as noted from the card in the information kit.
9. Once pairing is complete the Control Display will switch to "Phone Connected".
10. Wait to pair additional handsets until the phonebook is fully loaded.

ATTACHMENTS

view PDF attachment [B841304BluetoothDiagnosis.](#)

view PDF attachment [B841304BluetoothUserManualE60E63E64.](#)

view PDF attachment [B841304BluetoothUserManualIBUS.](#)