

When you receive your spoiler, you should get a set of double tape - if not, here's the part no. to pick it up from your BMW dealer.

8 040 053 ONE
ape B MIAMI MOTO
030507S

1 Stück / piece
51 62 8 040 053
EG Y
EW Y
BMW
Made in Germany 01 M05

This piece goes on the right side (looking at the spoiler from underneath)

You will get 2 rolls like this one (about 1 metre long each) - for top and bottom part of the spoiler

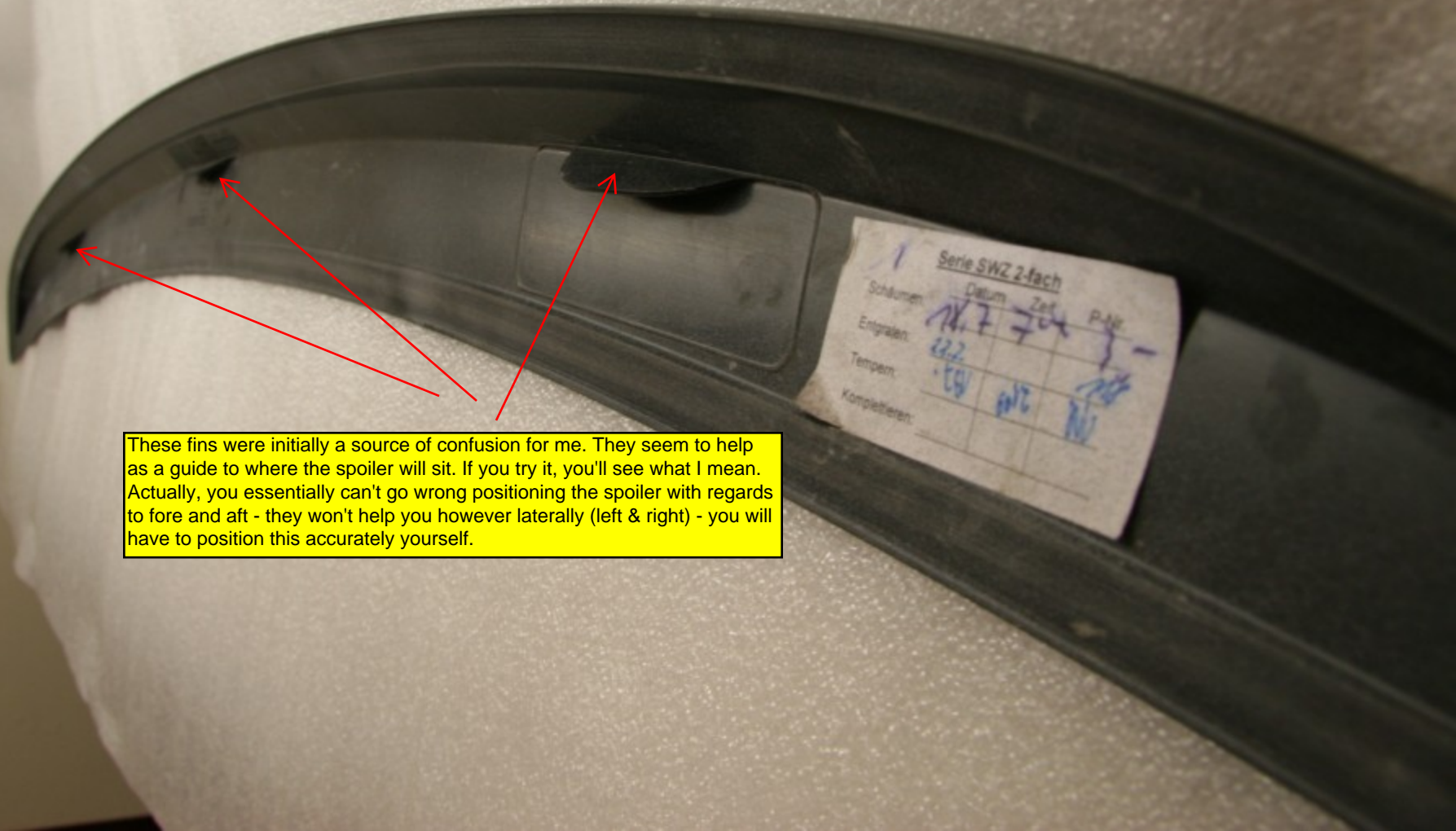
...for the left side

Preping your car !! : You will need to clean thoroughly the rear part of your boot - wash and clean again with 100% alcohol or spirit the part where the spoiler will sit. NO Rejex, no Zaino, no wax !! just the original BMW paint...dry thoroughly !

You can already see the "guides" for the double side tape - you get the idea !

The 2 corner pieces are for the corners on the spoiler here. Pretty straightforward stuff.





These fins were initially a source of confusion for me. They seem to help as a guide to where the spoiler will sit. If you try it, you'll see what I mean. Actually, you essentially can't go wrong positioning the spoiler with regards to fore and aft - they won't help you however laterally (left & right) - you will have to position this accurately yourself.

Serie SWZ 2-fach			
Schlumen	Datum	Zeit	P-Nr
	18.7	7:04	3-
Ergebnis:	22.2		
Temper:	50	102	10
Kompletieren:			

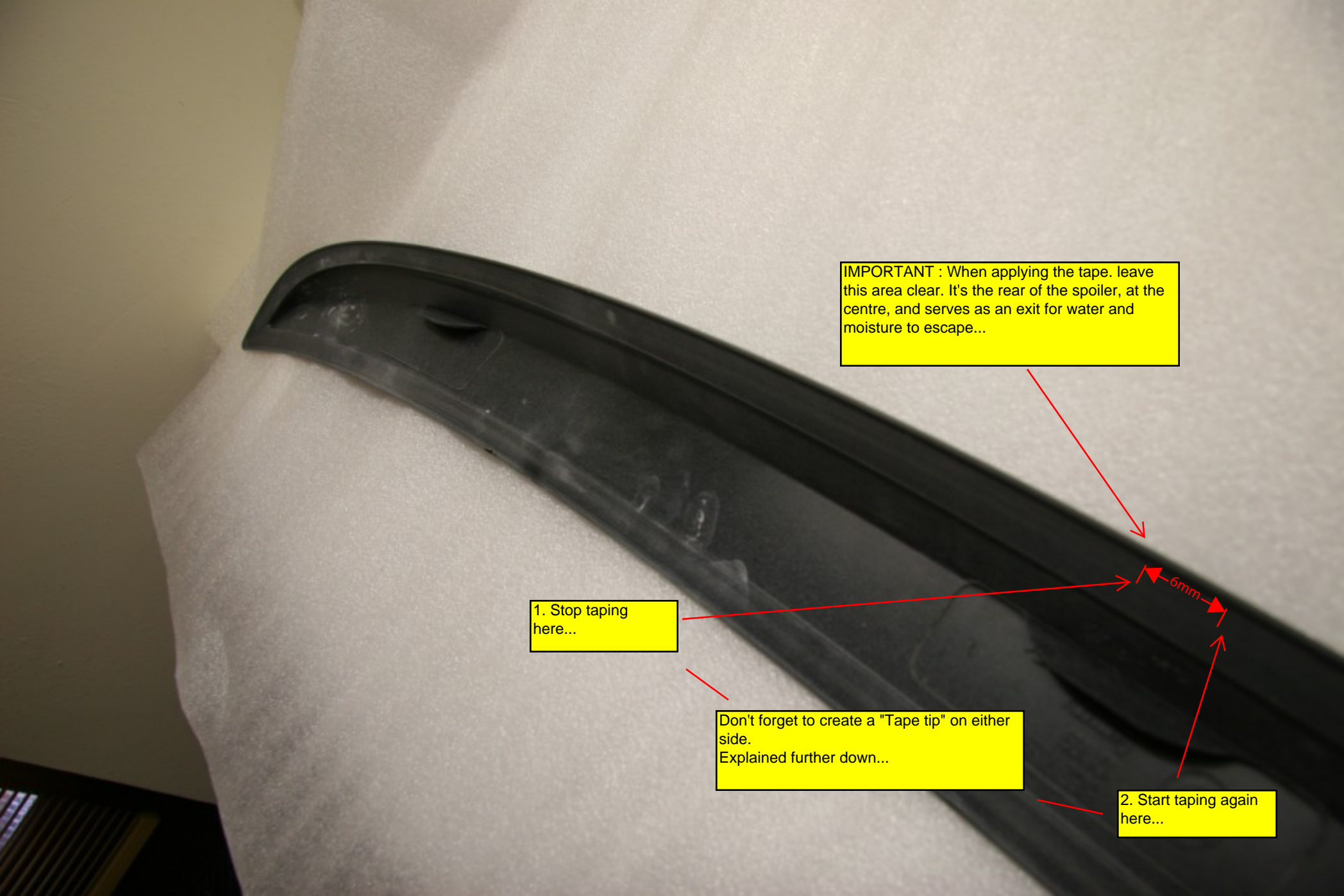
IMPORTANT : When applying the tape. leave this area clear. It's the rear of the spoiler, at the centre, and serves as an exit for water and moisture to escape...


1. Stop taping here...

Don't forget to create a "Tape tip" on either side.
Explained further down...

2. Start taping again here...

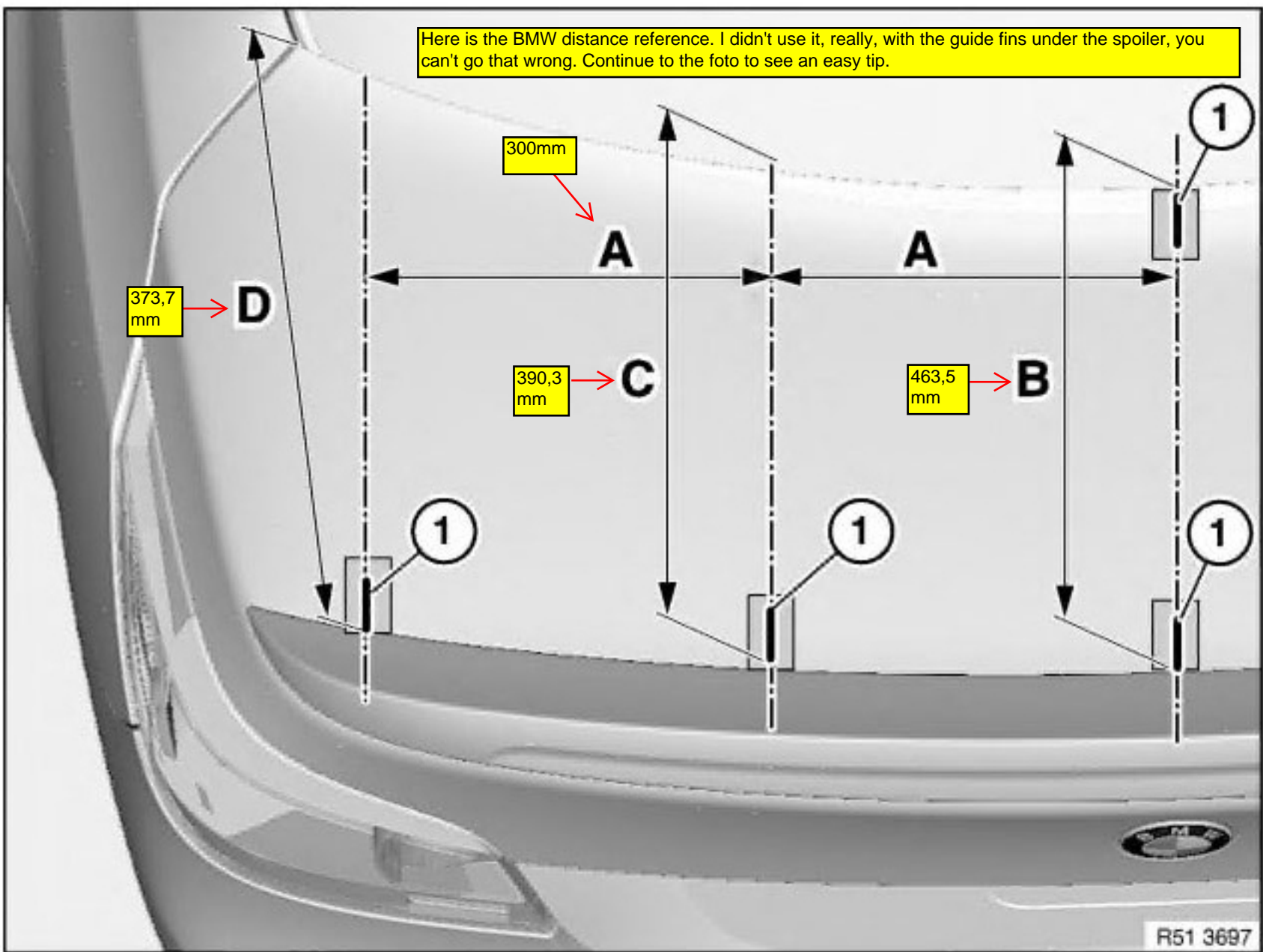
6mm



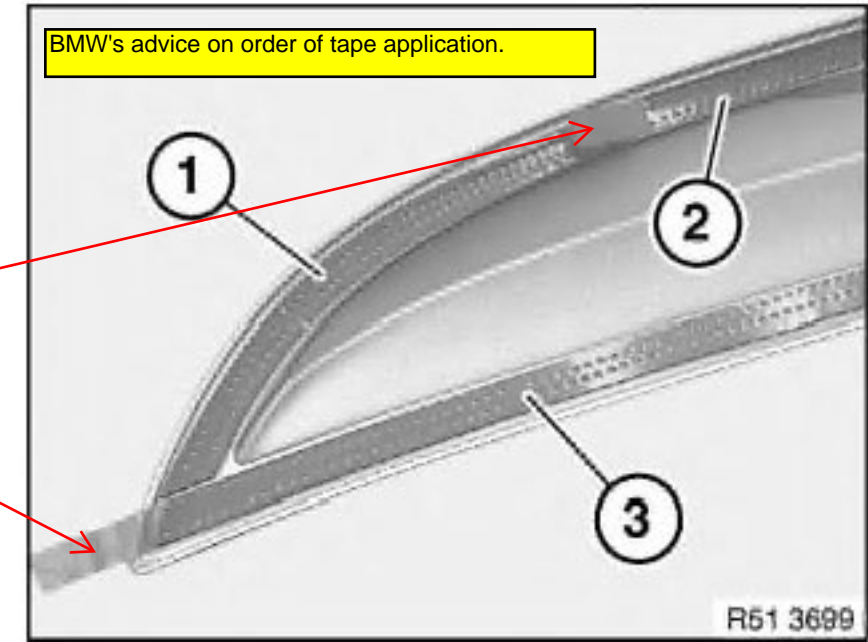


REMINDER: The "guide" surfaces should be clean and dust free. The double side tape's glue is pretty strong stuff ! Use alcohol again to clean these surfaces

Here is the BMW distance reference. I didn't use it, really, with the guide fins under the spoiler, you can't go that wrong. Continue to the foto to see an easy tip.

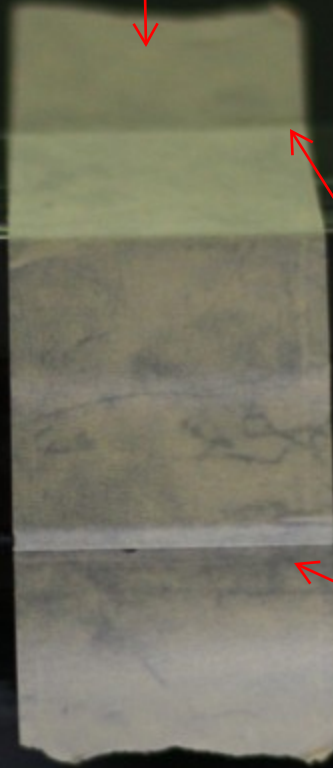


BMW's advice on order of tape application.



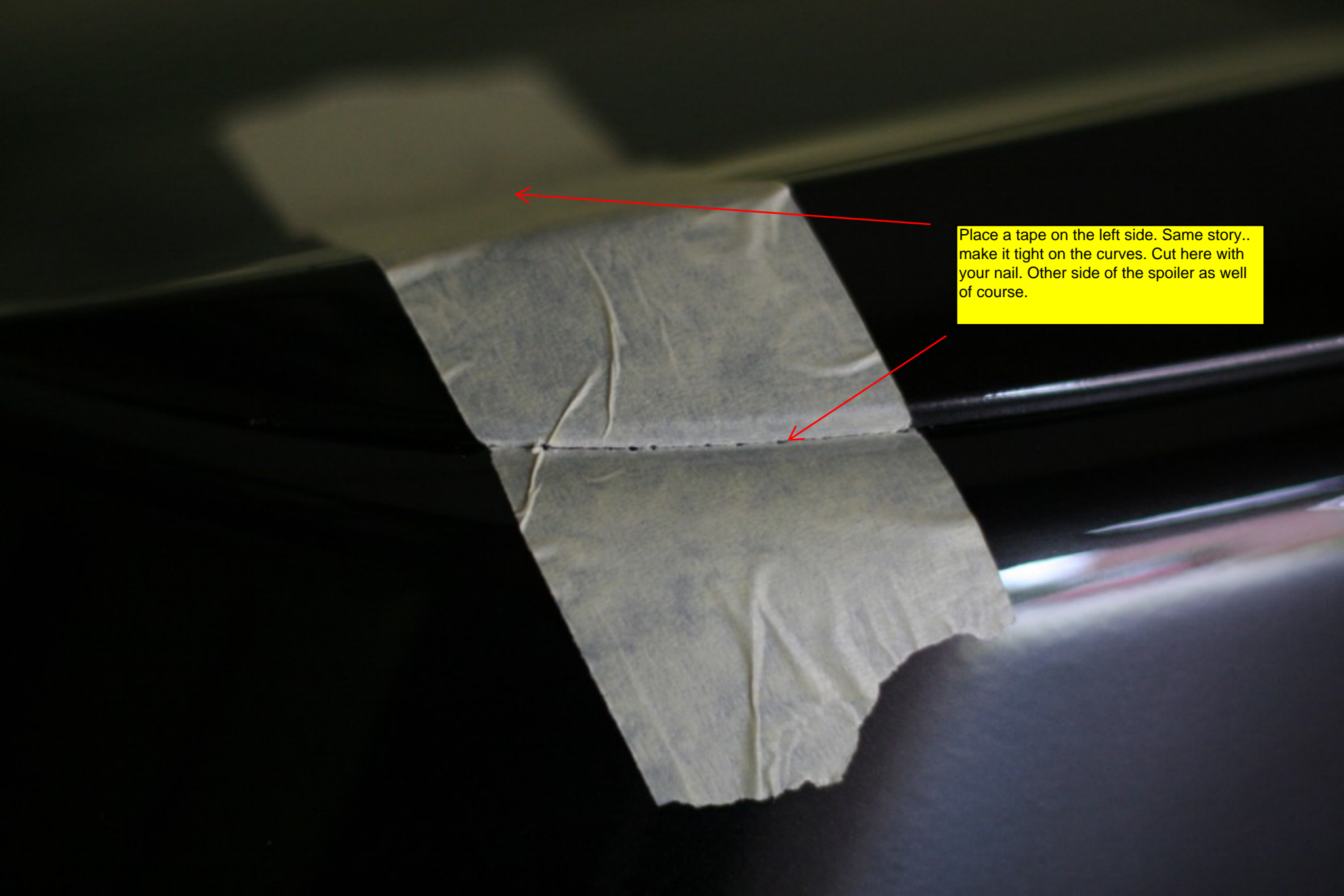
R51 3699

OK. The double side tape is on the spoiler ! Don't remove the other side yet !! Place the spoiler on the boot.. Make sure the left and right part are equidistant. When happy place some paper tape over the spoiler making sure you tuck under the minute curvature of the spoiler where it meets the boot. Getting the idea ...? Place a tape on the left and right as well - these tapes will serve as GUIDES when you remove the spoiler - prep the "tape tips" - and place again on the boot. Line up the spoiler so it sits exactly where the tape on the bonnet is . This technique will help you line up the spoiler in case you accidentally move the spoiler and as a confirmation the the spoiler is lined up at the original and preferred position.



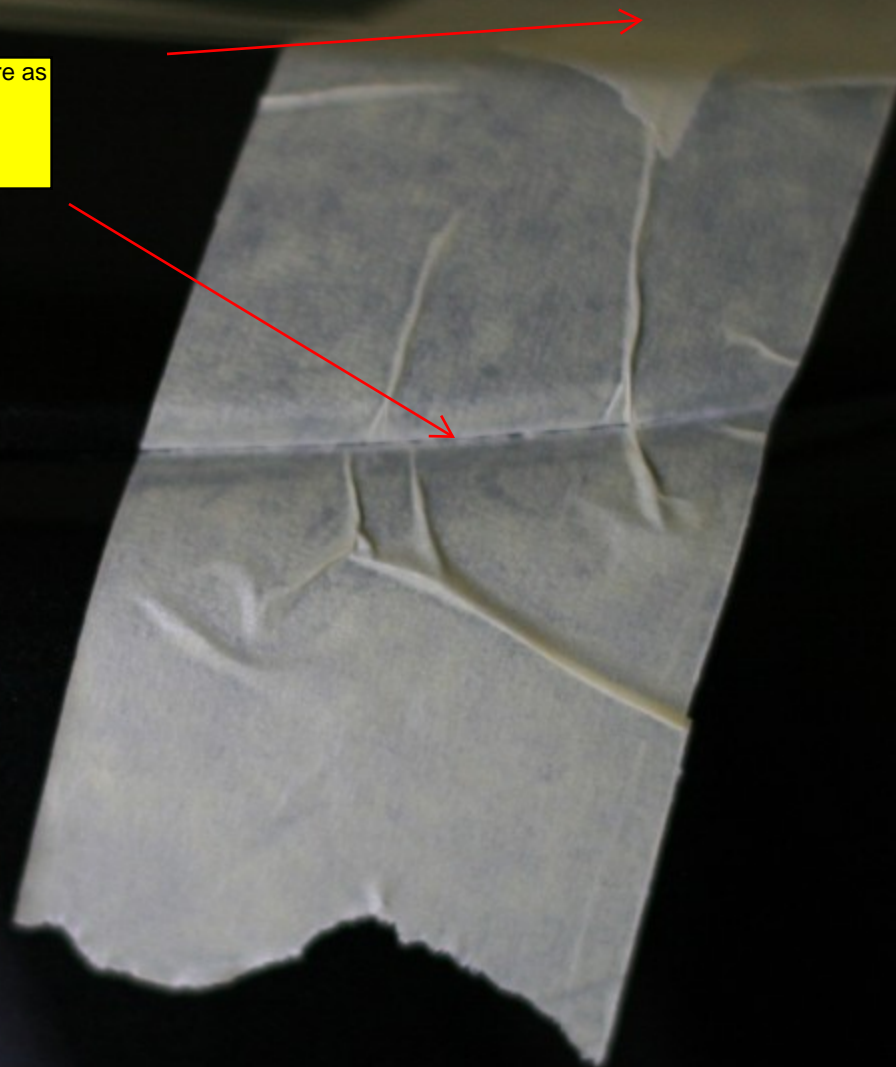
This distance will come more or less naturally by use of the spoiler inner guide fins.

Use your nail to cut exactly at the meeting point of spoiler and boot.



Place a tape on the left side. Same story.. make it tight on the curves. Cut here with your nail. Other side of the spoiler as well of course.

Right side. Yep...same story here as well...



OK. remove the spoiler, locate the "tape tips" probe them to the side (you might have to tape them to the side of the spoiler) - place the spoiler again on the bonnet (aligning it perfectly to the paper tape on the bonnet) and basically start removing the double side tape...slowly and surely.





M5 rear spoiler is ready. Maybe not necessary, but I placed some cloth over it and put something moderately heavy (2-4 pounds) on these areas.
The tape will bond nicely this way, not leaving any gaps. I left it like that overnight. The spoiler looks tight !



Remember ? This is where there is a gap along the tape, so water moisture can escape !